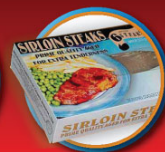


**MINERVA**

## Press Release

### Minerva sees no impact from Russian restrictions in Goiás

**Barretos, June 25, 2008** - Minerva S.A. (BOVESPA: BEEF3; Bloomberg: BEEF3.BZ; Reuters: BEEF3.SA), one of the market leaders in Brazil in the production and sale of beef products, leather and live cattle, announces to shareholders and the market in general that the Brazilian Ministry of Agriculture, by means of circular letter 633/2008/CGPE/DIPOA, disclosed today that the production and certification of fresh beef obtained from animals in the State of Goiás and destined to Russia were currently suspended due to the occurrence of vesicular stomatitis in that state, as notified by means of DSA Technical Note no. 38/08 on 06/24/2008.

The strategic location of Minerva's industrial units in various states of Brazil is once again proving very efficient in mitigating the effects of trade bans, since the Russian market will now be served by the Company's five other plants located in the states of São Paulo, Mato Grosso do Sul and Tocantins. Meanwhile, exports from the two plants located in Goiás state will continue as normal to other destinations.

A pioneer in the consolidation of the Russian market, today Minerva is one of the leading Brazilian exporters of fresh beef to Russia, with its market share of all Brazilian fresh beef exports rising to 18% in the first five months of 2008, up from 10% in the same period a year ago.

#### Investor Relations

**Carlos Watanabe**  
CFO and IRO

**Ronald S. Aitken**  
IR Superintendent

E-mail: [ri@minerva.ind.br](mailto:ri@minerva.ind.br)  
Phone: +55 (11) 3074-2434  
Website: [www.minerva.ind.br/ir](http://www.minerva.ind.br/ir)

#### About Minerva S.A.

Minerva S.A. is one of the leading producers and sellers of beef, leather and live cattle in Brazil, and is one of the country's three largest exporters in the sector in terms of gross revenue, exporting to some 80 countries. The Company has slaughter capacity of 5,500 head/day, processing capacity of 1,300 tonne/day and leather capacity of 5,000 hides/day. Minerva is present in the states of São Paulo, Goiás, Tocantins and Mato Grosso do Sul, where it operates six slaughterhouses, seven deboning plants and two tanneries, as well as distribution centers located in Olímpia and São Bernardo do Campo. In 2007 the Company recorded net sales revenue of R\$1.46 billion and EBITDA of R\$121 million.