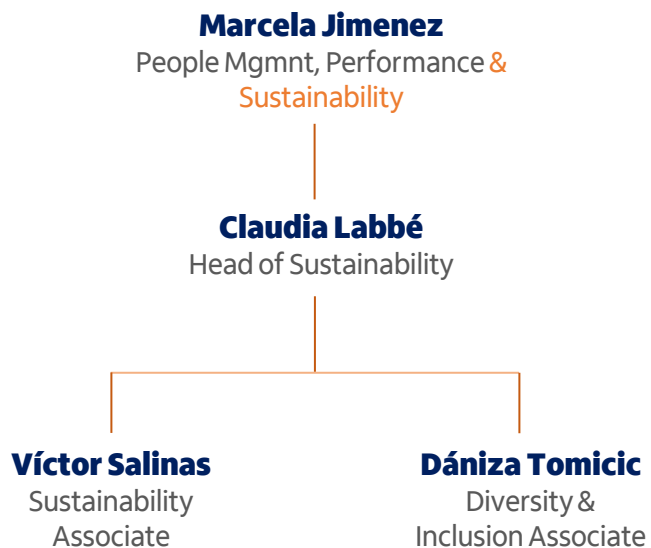


Mainstreaming of the ESG focus

> New management team

Aligning ESG strategy with our business strategy



New roles and responsibilities

Planning

- Strategic prioritization
- Working groups with corporate management

Internal support

- To advice for structuring sustainable-link loans
- To lead diversity, inclusion and Fundación Itaú

Reporting

- Annual Integrated Report
- Indices
- Regulators, unions and parent bank