



**TIM Brasil**

**TIM Day in NYC**

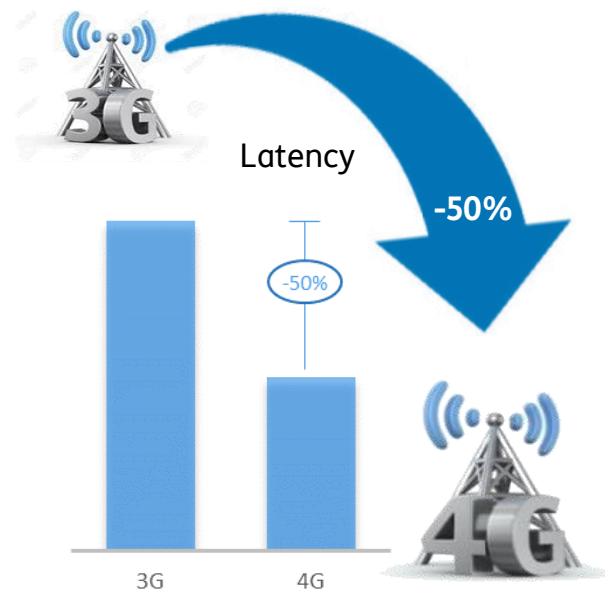
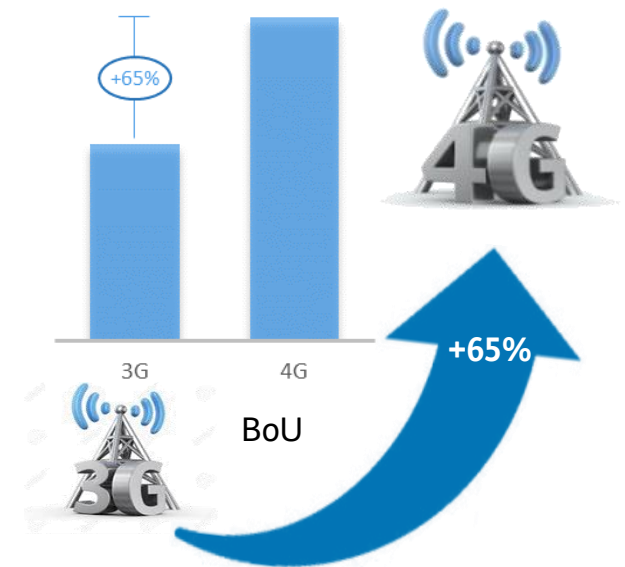
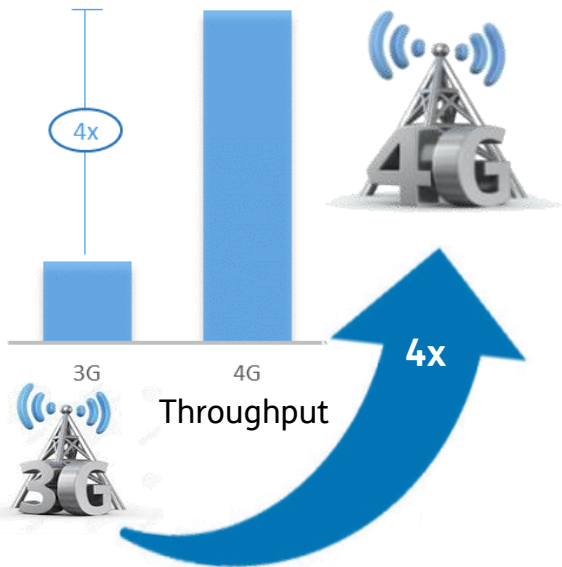
**Network Panel – Leonardo Capdeville (CTO)**

November, 2016



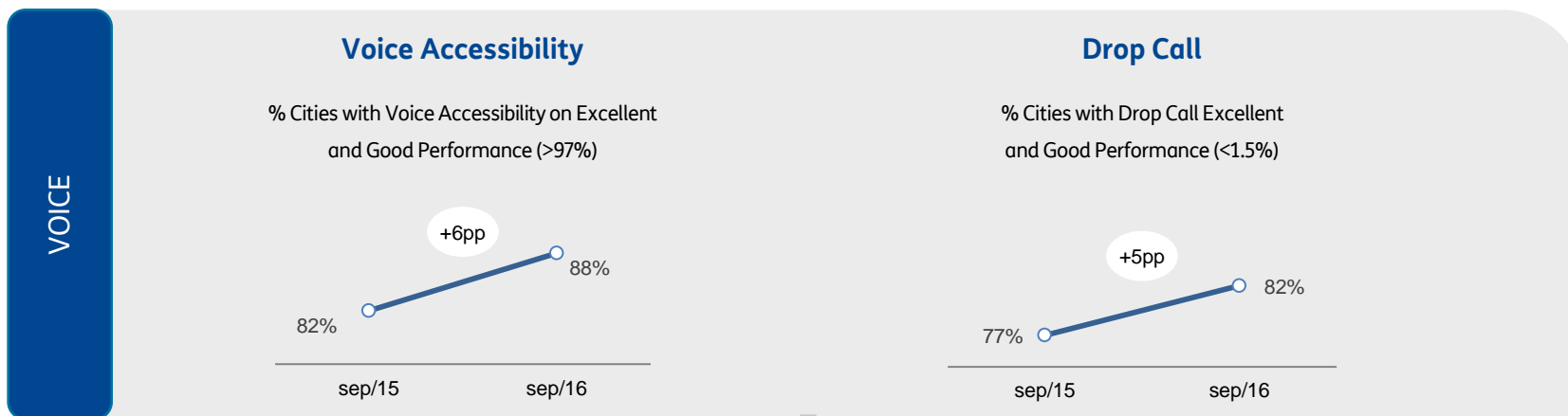
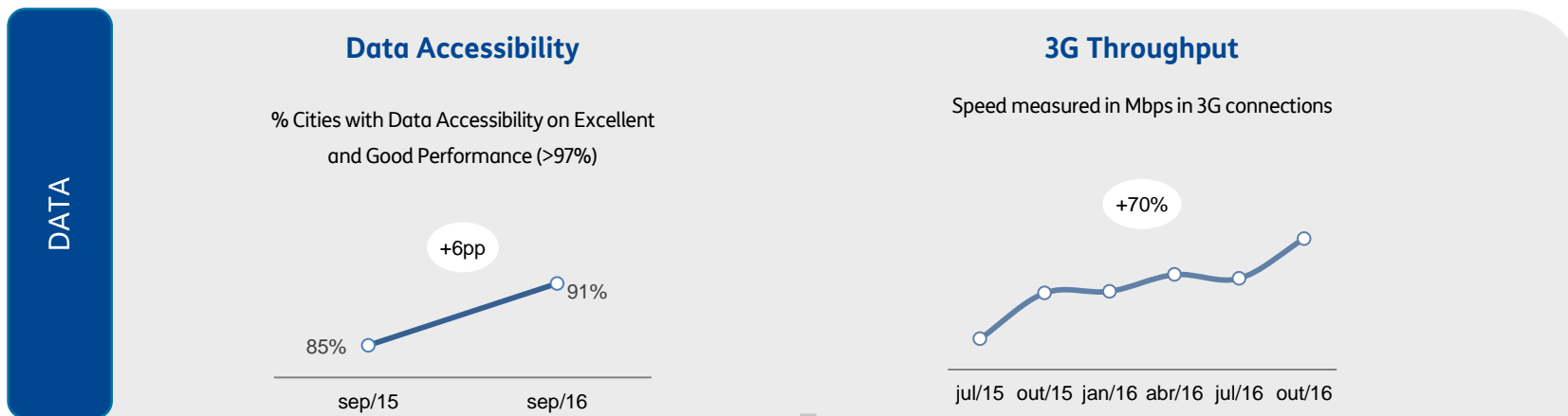
# A virtuous cycle in customer experience and efficient investment

What changes when customers upgrade to 4G?



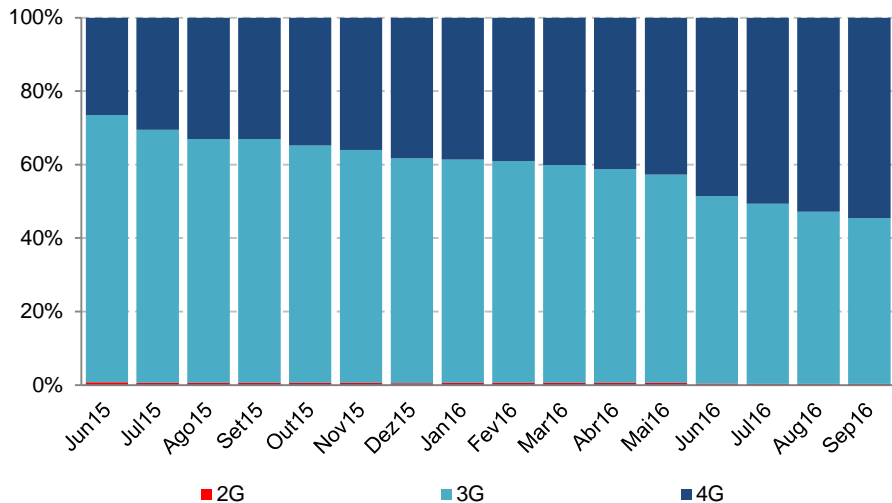
# In addition, offload through 4G network allows a better Experience also on 3G

Improving 3G quality for data and voice due to a lower load

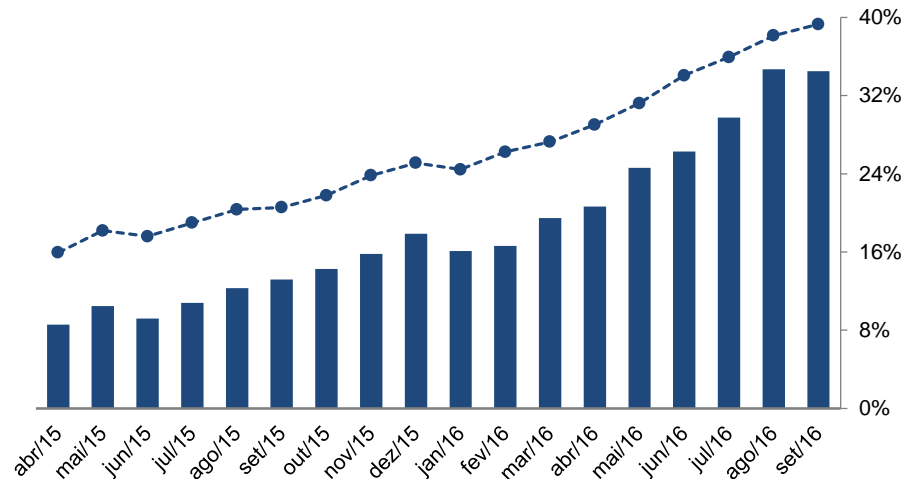


# This became a great opportunity for TIM

**Data traffic by device technology**  
(% of traffic)



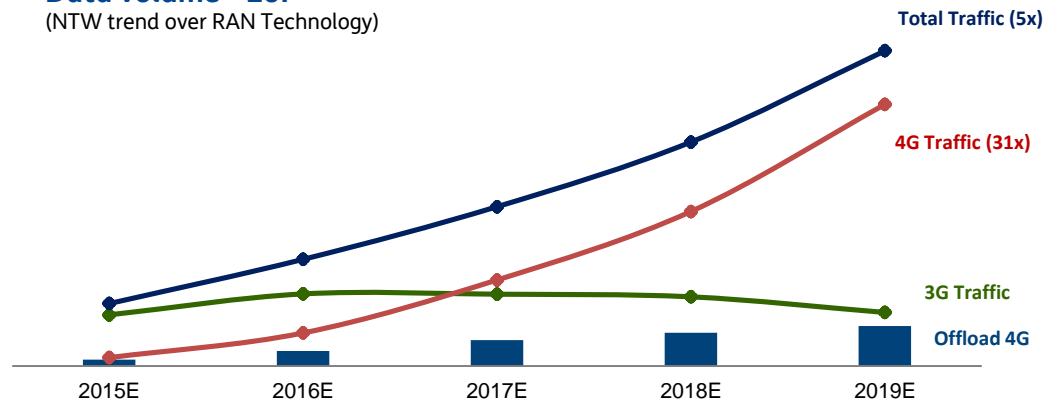
**Data volume carried on 4G network in main cities**  
(TB, % of traffic)



Main Cities: São Paulo, Rio de Janeiro, Belo Horizonte, Brasília and Curitiba.

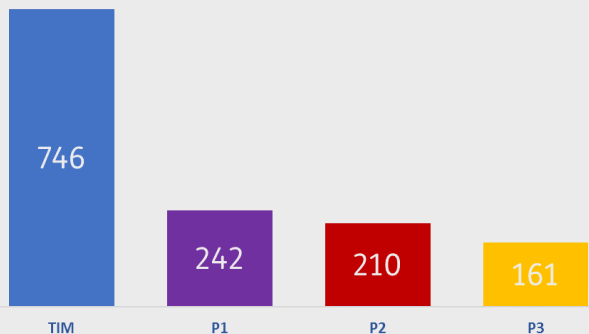
- 4G sustains the data traffic growth
- More than 55% of the data traffic is generated by 4G terminals
- More than 30% of the data traffic is carried in the 4G network. It grows to ~40% in the main cities

**Data volume - EoP**  
(NTW trend over RAN Technology)

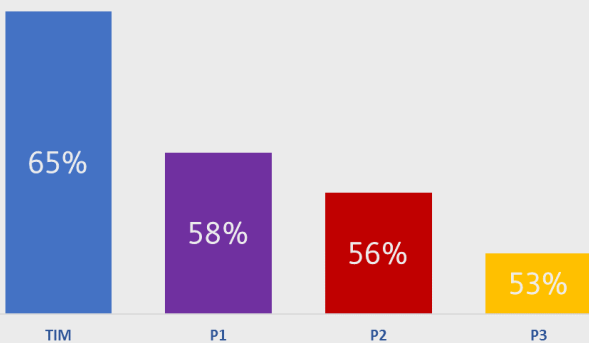


# Quality - Capture from TIM through the leadership in 4G Coverage (1.800 MHz)

## Cities with 4G coverage

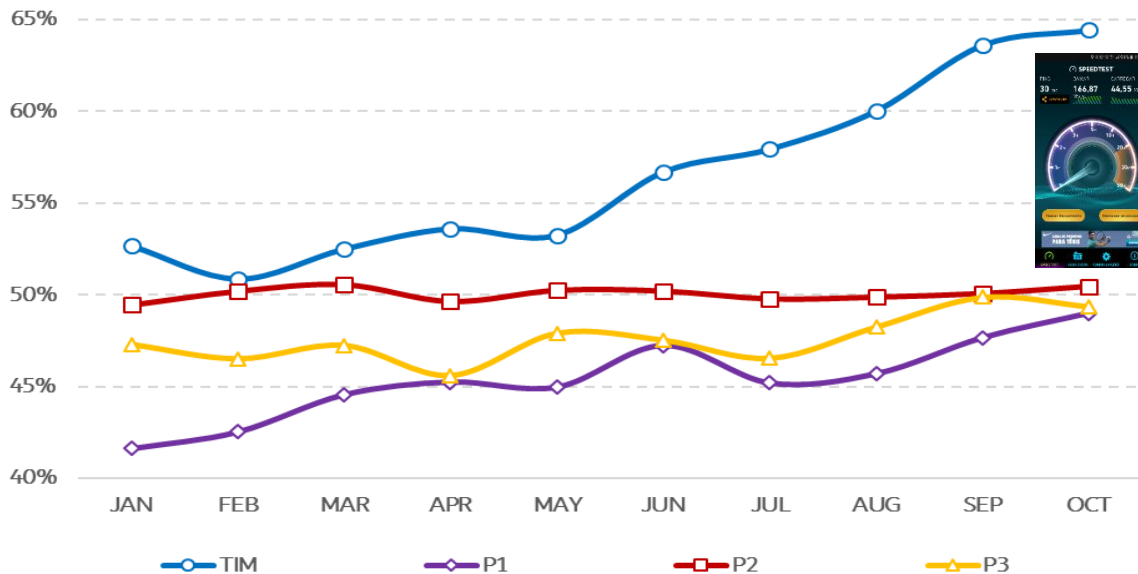


## Urban population under 4G coverage

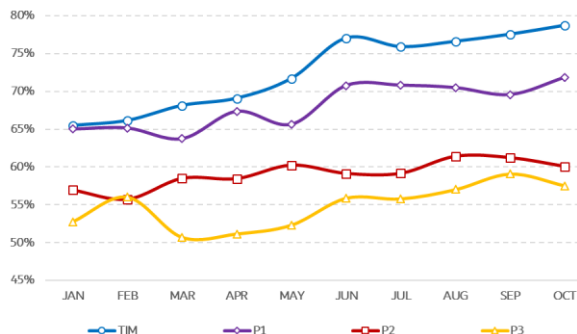


## % of 4G devices that run Speedtest app on 4G Network

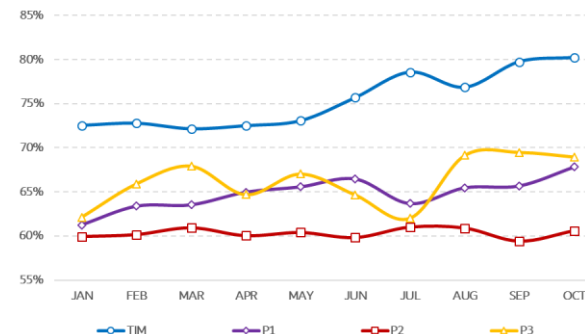
### Brazil



### Rio de Janeiro - RJ



### São Paulo - SP

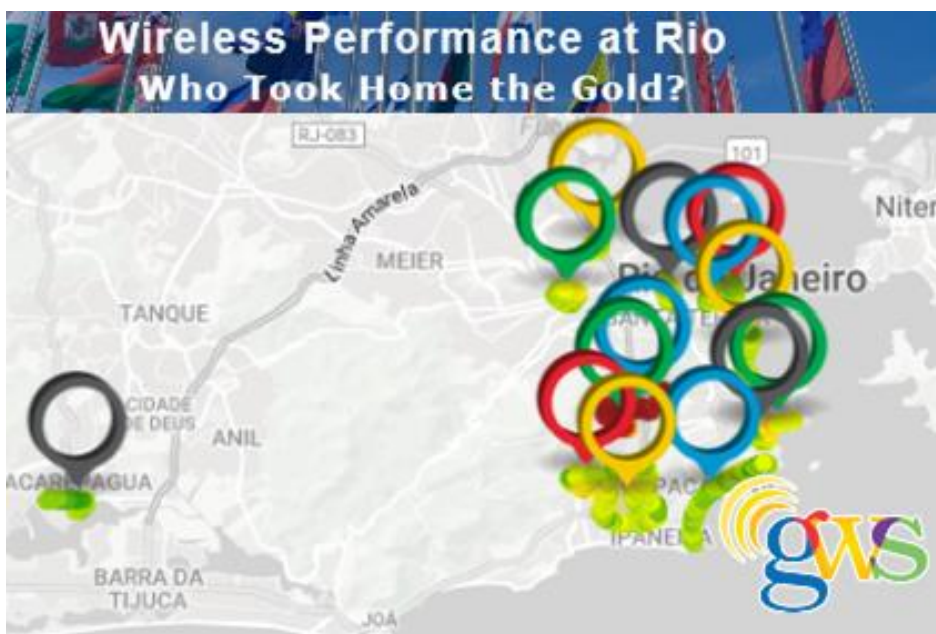




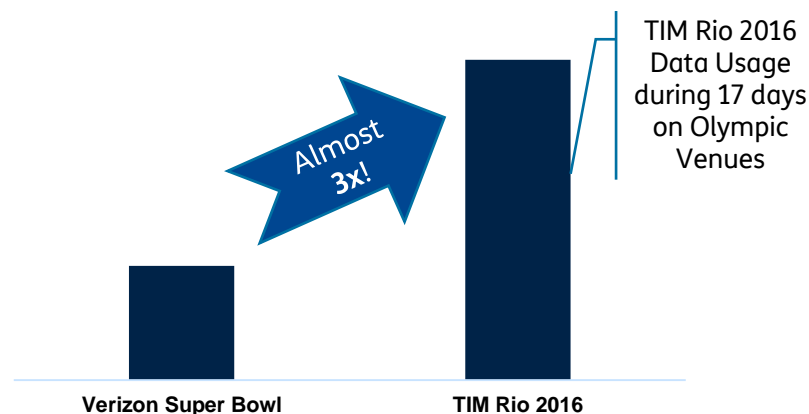
Tech / #Rio2016

JUL 27, 2016 @ 10:00 AM

## An Interactive Map Of Wireless Service At The Rio Olympics



Brazil has four top wireless providers—TIM, Claro, Oi, and Vivo—and of these, **TIM took home the gold**, and Claro came in with a close second. At Barra, where a number of the Olympic sporting events will take place, TIM had the fastest upload and download speeds of any of the carriers.



In the Olympic Park, 4G represented 70% of total connections

Thank you!

