



EARNINGS RELEASE 2022

MESSAGE FROM THE CHAIRMAN -

Looking back at 2022

Droughts and floods, record temperatures, desertification and the economic loss of productive areas in Brazil and various parts of the world have all served as a warning for the main challenge facing the survival of mankind: how to avoid the consequences of climate change.

The relentless increase in carbon emissions and the growing frequency of extreme weather events reinforce the importance of making a decisive shift towards a future with lower concentrations of greenhouse gases in the atmosphere. Global energy policies and discussions have focused on the importance of decarbonizing the energy system and transitioning to net zero (state of net-zero carbon emissions for the energy sector) by 2050.

However, there are several important considerations on how to reach this future in both Brazil and the world. The invasion of Ukraine by Russia was not just any old conflict: it has profound and enduring global implications from an economic, geopolitical and energy standpoint.

From an energy angle, interruptions in the flow of Russian oil and gas, fertilizers and minerals and the ensuing global energy and food shortages fueled inflation worldwide. Monetary authorities hiked interest rates in unison to tackle these effects, producing an economic slowdown.

Geopolitical events last year made it clear that the energy transition must also take into account the security and affordability of energy prices.

Together, these three dimensions of the energy system - security, affordability and sustainability - make up what has long been known as the energy trilemma. A successful and enduring energy transition needs to address all three elements of the trilemma.

As was the case in Brazil, following the severe water crisis in 2021, there was a sharp increase in energy costs in all countries last year, due to the rising costs of fossil energy. The economic and social consequences were very severe and are still being felt.

Last year's episodes in Europe are leading developed countries to ramp up their energy security by turning to the domestic production of renewable energy or acquiring supplies of energy-intensive products from reliable allied countries. All indications suggest that the pace of the energy transition will quicken.

This leads us to the conclusion that the energy transition needs to be orderly so that the demand for hydrocarbons falls in line with available supplies, avoiding future periods of energy shortages and higher prices. Also, high subsidies borne by energy consumers should be avoided during the transition.

In this scenario, Brazil could potentially occupy a prominent position as it already has abundant natural resources and an energy matrix (including fuels) more than 43% derived from renewable sources compared to 14% in the rest of the world, in addition to being a reliable partner and keeping a safe distance from international conflicts.

To achieve this goal, the attention of authorities and the general public should be drawn to the enormous escalation of subsidies for renewable sources, such as those for distributed generation, and the distortions of costs added to electricity bills, which ultimately penalize Brazilian consumers.

In August 2022, the enactment of Complementary Law 194 was extremely emblematic, which reclassified the ICMS tax on electricity after decades of increases in the basic rate. Unfortunately, electricity, along with other products, became subject to tax increases at the end of the year in various states. This tax volatility ultimately harms competitiveness in attracting investors who want to take advantage of our energy and natural potential to allocate "green" production in the country.

While generous subsidies for the expansion of renewable sources still coexist, it is the regulated distribution and transmission services that ensure reliability, universal access and access to electricity for all. It is necessary for the progressive and orderly opening up of the market, and that distribution concession renewal rules take into account the balance between all these segments, so as not to incur an expensive transition that provides no

security for future investments.

And Energisa is perfectly poised in this context. Energy transition and electrification go hand in hand, and we have vast expertise in both fields. We are ready to meet the diverse needs of our customers for grid services, energy solutions, and electricity marketing, capitalizing on our century-old experience in the sector.

Achievements and Highlights

In the distribution segment, the quality indicators of the services offered by the Group's distribution companies, monitored by the DEC and FEC rates, show we achieved the best performance in our history. This is a significant milestone not only to meeting the quality requirements of ANEEL Resolution REN 1,000, which introduced new indicators to be followed, with a more critical approach and a higher level of oversight and penalties, but above all, because the satisfaction of our customer base is a fundamental pillar of our future strategy.

Our strong performance was recognized in the ABRADEE awards, which are based on benchmarking among companies in the sector, and satisfaction surveys conducted on residential electricity customers. Energisa was the best-rated energy distribution group in Brazil, winning 8 out of 15 categories, with Energisa Minas being recognized as the best distribution company in the country for up to 500,000 customers, and Energisa Paraíba as the best distribution company in the category above 500,000 consumers.

We invested R\$ 4,702.6 million in 2022 in distribution, 52.7% more than in 2021.

Regarding Transmission, 2022 was a significant year for expanding our operations in this segment, which we entered in 2017. At the end of 2022 and early 2023, we completed the Energisa Tocantins Transmissora I venture, in an investment of R\$ 756.2 million, adding 734 km of transmission lines and 6 substations with an installed capacity of 850 MVA. Additionally, we won another auction for the construction of a 230-kV transmission line with a length of 12.9 kilometers to supply power to the metropolitan region of Manaus, in an expected investment of R\$ 207.1 million. Lastly, we completed the acquisition of Gemini Transmissora, which allowed us to more than double our revenue in the transmission segment. This acquisition, which comprises three transmission concessions in the states of Pará, Amapá, Rio de Janeiro, and São Paulo, added nearly 1,500 km of transmission lines and eight substations, with an installed capacity of 6,700 MVA. Energisa ended the year with 12 Transmission concessions in its portfolio, of which 8 are operational (R\$ 665.5 million in RAP, considering fiber optic revenue) and 4 lines under construction (R\$ 116 million in RAP, totaling an Annual Permitted Revenue of R\$ 781 million for the 2022/2023 cycle).

In 2022, despite the uncertainty and volatility, we took significant steps towards consolidating ourselves as an ecosystem of energy solutions, diversifying our operations. We accordingly created (re)energisa, a brand dedicated to non-regulated distributed generation through renewable sources, energy marketing in the free market, and value-added services, with a countrywide presence. (re)energisa has the purpose of helping our customers in the energy transition by offering solutions aligned around the 4 Ds - Decarbonization, Digitalization, Decentralization and Diversification.

In 2022, we also connected 32 distributed generation (DG) units in various states, totaling 128.4 MWp in 2022, which helped (re)energisa end the year with 188 MWp of installed capacity.

Good news also came with the start-up of operations of the Rio do Peixe I and II solar clusters in Paraíba, with 70 MWp of installed capacity in the free market. The ventures have the I-REC global clean energy certificate and will prevent the emission of about 15,000 tons of CO₂ equivalent per year into the atmosphere.

Created in 2020 as another operating division, Voltz greatly broadened its initial core activity of promoting financial and digital inclusion for Energisa customers who were excluded from the banking system. Today, the fintech has evolved into a financial services platform that offers everything from loans to bill payments to factoring or even structured credit solutions for the Group's suppliers. Its role has been crucial in combating delinquency within Energisa Group, offering loans to customers with overdue energy bills. In 2022, we reached the milestone of 1 million registered customers. It is also important to highlight that Voltz, as a PIX issuer, already accounts for 7% of the bills issued by Energisa, helping drive down collection costs.

In terms of our financials, EBITDA grew 19.2% to R\$ 6,996.2 million in 2022. Energisa made net income of R\$ 2,428.0 million in the year. Energisa displayed great discipline in 2022 in managing PMSO, allowing it to keep

operating costs below inflation. Lastly, we allocated considerable resources and technology to keep the electric loss rate below the regulatory benchmark, which reached 12.38% of injected energy, a decrease of 0.85 percentage points compared to 2021. This result is the lowest since the acquisition of Energisa Acre and Energisa Rondônia in 2018.

We can credit these achievements to a multidisciplinary endeavor involving various areas of the Group dedicated to customer centricity, as well as a constantly evolving culture based on our values and maintaining an environment of trust and elite performance.

We are proud to be a Brazilian Group that has been operating in the electricity sector for 118 years. We have witnessed and driven many transformations in Brazil throughout our journey, and we are aware that the coming years will bring even deeper changes. Our long-term strategy is anchored in our commitment to sustainable development, proof of our confidence in Brazil's future and our desire to continue contributing to this story.

Ricardo Botelho

CEO of Energisa Group

Cataguases, March 16, 2023.

Energisa S/A | 2022 Earnings Release

Cataguases, March 16, 2023 - The management of Energisa S/A (“Energisa” or “Company”) hereby presents its results for the fourth quarter (4Q22) and the year 2022. The following financial statements have been prepared and are being presented in accordance with accounting practices adopted in Brazil and International Financial Reporting Standards (“IFRS” issued by the International Accounting Standards Board (“IASB”), comprising the standards issued by the Brazilian Securities Commission (“CVM”) and the pronouncements, instructions and interpretations issued by the Accounting Pronouncement Committee (“CPC”) and when applicable the regulations of the regulatory agency, the National Electricity Regulatory Agency- ANEEL, unless stated otherwise.

➤ Company Management reviewed the methodology used to calculate the sales not invoiced by the electricity DisCo subsidiaries and reclassified part of the balances of short-term investments and linked resources from non-current assets to current assets in 2021, which resulted in the restatement of the 2021 financial statements, based on the instructions issued in “CPC 23 - Accounting Policies, Changes in Estimation and Correction of Errors”. For further information see Note 3.3.

Summary

- **EBITDA** grew 9.1% to R\$ 1,553.8 million in the 4th quarter and in FY 2022 reached R\$ 6,996.2 million, an increase of 19.2%. **Adjusted recurrent EBITDA** (excluding VNR, Corporate EBITDA of TransCos, nonrecurrent/noncash effects and includes TransCos’ Regulatory EBITDA) amounted to R\$ 1,440.3 million in 4Q22, an increase of 8.3% (R\$ 110.1 million) on 4Q21. In 2022 the recurrent Adjusted EBITDA was R\$ 5,855.1 million, 21.6% (R\$ 1,039.8 million) more than 2021;
- **Manageable PMSO expenses (Personnel, Materials, Services and Other)** remained below inflation in the period, rising 3.0% (R\$ 27.9 million), amounting to R\$ 955.6 million in the 4th quarter. In 2022 these expenses amounted to R\$ 2,938.5 million, an increase of 2.1% (R\$ 60.8 million) between the periods.
- **Net income** grew 16.5% to R\$ 382.9 million in the 4th quarter and in FY 2022 reached R\$ 2,428.0 million, a decrease of 13.7% compared with 2021. **Recurrent adjusted net income** (excluding VNR, nonrecurrent and non-cash effects and corporate net income of the TransCos and including the transCos’ regulatory net income) rose 35.0% (R\$ 138.8 million) and closed the quarter at **R\$ 535.1 million**. In 2022 it amounted to **R\$ 1,722.1 million**, an increase of 4.4% (R\$ 72.2 million);
- **Consolidated investment** of R\$ 1,693.5 million in the 4th quarter, an increase of 46.0% (R\$ 533.2 million) on the same period of the previous year. Investment in the year stood at R\$ 6,529.7 million, an increase of 55.4% on 2021.
- **Energy sales (captive sales + TUSD)** advanced 1.4% in 2022 compared with 2021, to 37,519.8 GWh. Total sales in 4Q22 contracted by 0.3% on the same period last year;
- **Consolidated net debt** amounted to R\$ 22,181.9 million at the end December, compared with R\$ 21,095.4 million at the end of 3rd quarter of 2022. The position of **cash and equivalents** in December was R\$ 5,948.3 million and sector credits amounted to R\$ 163.7 million. The ratio between net debt and adjusted EBITDA closed the quarter at **3.0 times**;
- **Total consolidated electricity losses** stood at 12.38% of injected energy, a decrease of 0.51 p.p. compared with the previous quarter, remaining below the regulatory level for the seventh consecutive quarter, at the lowest level since 2018. The DisCos’ DEC and FEC quality indicators continued outperforming regulatory requirements.
- **(re) energisa** closed 2022 with an installed capacity of 188 MWp and 53 operating plants in the states of Minas Gerais, Mato Grosso, Mato Grosso do Sul and Rio de Janeiro. This segment received total investment of R\$ 842.8 million in 2022.
- On December 22, 2022 the National Grid Operator (“ONS”) released transmission functions 1 and 2 of **Energisa Tocantins Transmissora de Energia S.A (“ETT”)**, with the base date of function 1 commencing November 07,

2022 and the base date of function 2 commencing December 17, 2022, accounting for 37.0% and 37.4% of the venture's total RAP respectively. On January 26, 2023 the ONS released transmission function 3 and the final transmission function, accounting for 25.6% of total RAP. Total investment of R\$ 756.2 million was made in the venture.

- On November 30, the general meeting approved the merger of Energisa Nova Friburgo (ENF) into Energisa Minas Gerais (EMG) and the change to EMG's name to Energisa Minas Rio - Distribuidora de Energia S.A. (EMR).

Quick Facts

Description	Quarter			Year		
	4Q22	4Q21 (restated)	Change %	2022	2021 (restated)	Change %
Financial Indicators - R\$ million						
Revenues	9,093.8	10,061.3	- 9.6	36,963.0	37,134.4	- 0.5
Net operating revenue without construction revenue ⁽¹⁾	5,359.2	6,535.4	- 18.0	21,095.8	23,370.0	- 9.7
EBITDA	1,553.8	1,423.7	+ 9.1	6,996.2	5,869.6	+ 19.2
Recurrent Adjusted EBITDA ⁽²⁾	1,440.3	1,330.3	+ 8.3	5,855.1	4,815.3	+ 21.6
Covenants Adjusted EBITDA ⁽³⁾	1,648.4	1,533.5	+ 7.5	7,405.8	6,324.3	+ 17.1
Net income	382.9	328.6	+ 16.5	2,428.0	2,814.8	- 13.7
Recurrent adjusted net income ⁽⁴⁾	535.1	396.3	+ 35.0	1,722.1	1,650.0	+ 4.4
Net indebtedness ⁽⁵⁾	22,181.9	15,252.5	+ 45.4	22,181.9	15,252.5	+ 45.4
Investment	1,693.5	1,160.3	+46.0	6,529.7	4,200.7	+55.4
EBITDA Margin (%)	23.3	20.0	+ 3.3 p.p.	26.4	22.2	+ 4.2 p.p.
Net income margin (%)	5.7	4.9	+ 0.8 p.p.	9.2	10.6	- 1.5 p.p.
Consolidated Operating Indicators						
Captive sales + Billed TUSD (GWh)	9,593.2	9,625.2	- 0.3	37,519.8	37,000.7	+ 1.4
Number of consumers	8,409,153	8,216,055	+ 2.4	8,409,153	8,216,055	+ 2.4
Number of own staff	16,676	15,649	+ 6.6	16,676	15,649	+ 6.6

1) Construction revenue: infrastructure construction revenue + transmission infrastructure maintenance and operation revenue + revenue from construction performance obligation margins + remuneration of the contract asset (electricity transmission). (2) EBITDA discounted from the distribution VNR and corporate transmission EBITDA and nonrecurrent and noncash effects and addition of the transmission regulatory EBITDA; 3) EBITDA plus arrears surcharge revenue (4) Net income discounted from the distribution VNR and corporate transmission net income and nonrecurrent and noncash effects and addition of the transmission regulatory net income; 5) Includes sector credits (CDE, CCC, CVA).

Videoconference about our results



Friday, March 17, 2023

Time: 15:00 (BRT) | 14:00 (EST) with simultaneous translation into English.



[Click here](#) to join the Video conference

Investor Relations

For information and Release tables in Excel format, please visit Energisa's IR site:
ri.energisa.com.br

E-mail: ri@energisa.com.br

Contents

1. Corporate structure and profile	10
1.1. Corporate Structure of Energisa Group.....	11
2. Energisa - consolidated	13
2.1. Operating revenue	13
2.2. Operating costs and expenses	13
2.3. EBITDA.....	16
2.4. Finance result.....	17
2.5. Net income for the period.....	18
2.6. Capital structure.....	18
2.6.1. Financial operations in 4Q22.....	18
2.6.2. Cash and debt	19
2.6.3. Cost and average debt tenor.....	21
2.6.4. Debt repayment schedule.....	21
2.7. Ratings.....	22
2.8. Investments	22
2.9. Cash flow	23
2.10. Capital market	23
2.11. Dividends	23
3. Distribution	24
3.1. Operating revenue	24
3.1.1. Electricity market	25
3.1.2. Consumption by sector	26
3.1.3. Clients by concession operator.....	27
3.1.4. Electricity losses ("losses")	27
3.1.5. Delinquency management.....	29
3.1.5.1. Delinquency rate.....	29
3.1.5.2. Collection fee.....	30
3.1.5.3. Service quality indicators for distribution services - DEC and FEC	30
3.1.6. Compensation account for Parcel A amounts (CVA)	31
3.1.7. Overcontracting	31
3.1.8. Rate tiers	31
3.1.9. Rate reviews and adjustments.....	31
3.1.10. Regulatory remuneration base	32
3.1.11. Parcel B.....	33
3.1.12. Rate subsidy, low income and sub-rogation credits	33
3.2. Operating costs and expenses	34
3.2.1. Non-Manageable operating costs and expenses	34
3.2.2. Manageable operating costs and expenses	34
3.2.3. Other operating expenses.....	36
3.3. EBITDA.....	36
3.4. Net income for the period.....	37
4. Transmission	38
4.1. Overview	38
4.2. Headlines for the period	39
4.3. Ratification of Annual Permitted Revenue (RAP) – 2022/2023 Round	39
4.4. Main differences between the Corporate and Regulatory results.....	40
4.5. Consolidated economic and financial results - Corporate vs. Regulatory.....	41
5. (re) energisa	43
5.1. Distributed generation	43
5.2. Electricity marketing	44

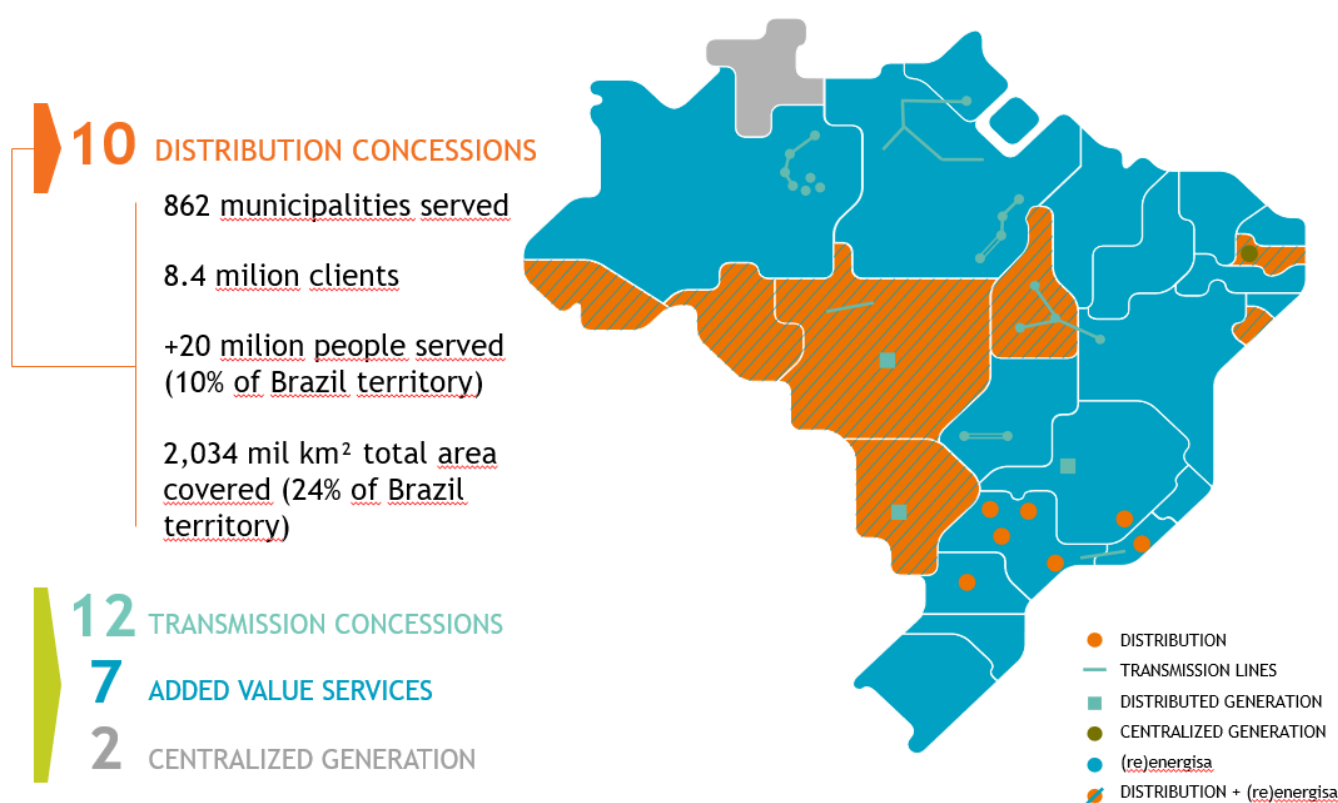
5.3.	Added Value Services	44
6.	Centralized generation	45
7.	Subsequent events	46
	Appendix I - Supplementary information	50
A.1	Net operating revenue - Consolidated	50
A.2	EBITDA by company.....	51
A.3	Profit (loss) per company	52
A.4	Mirror debentures.....	53
A.5	Investment by company.....	55
	Appendix II - Financial Statements	56
1.	Statement of financial position - assets.....	56
2.	Statement of financial position - liabilities.....	57
3.	Statement of profit or loss	58
4.	Comprehensive statement of income.....	59
5.	Statement of cash flows.....	60
	Board of Directors Fiscal Council Executive Board	
	64	

1. Corporate structure and profile

Energisa Group completed 118 years of history on February 26, 2023, and serves roughly 8.4 million consumers in eleven Brazilian states, home to approximately 10% of Brazil's population.

The Company controls 10 DisCos located in the states of Minas Gerais, Sergipe, Paraíba, Rio de Janeiro, Mato Grosso, Mato Grosso do Sul, Tocantins, São Paulo, Paraná, Acre and Rondônia, with a concession area embracing 2,034 thousand Km², equal to 24% of Brazil's landmass.

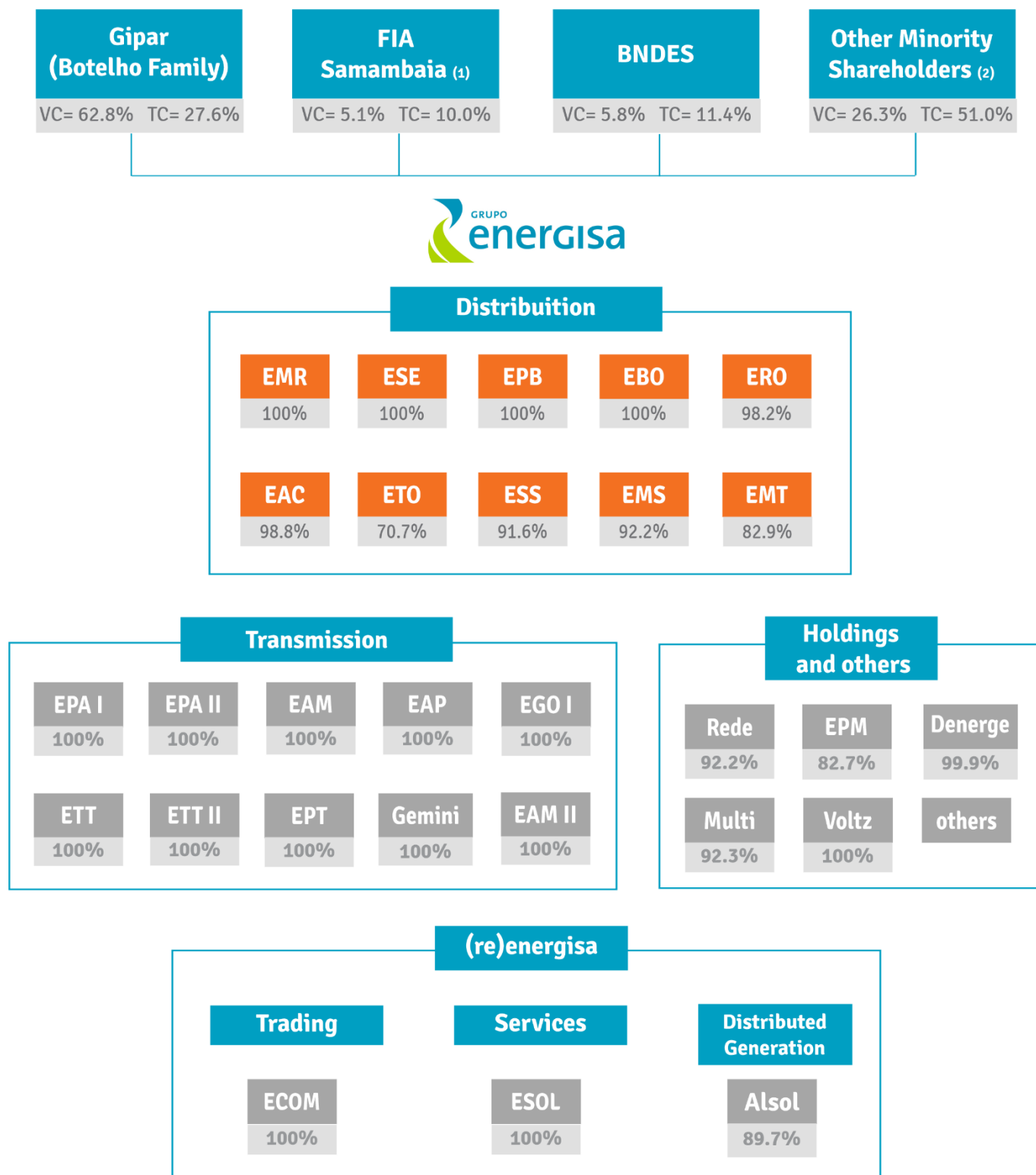
Energisa Group's activities also includes (re) energisa, a group brand tasked with managing and trading energy in the free market, providing value-added services and distributed generation from renewable energy sources, with a capacity of 188 MWp in December 2022. The Group also operates in the energy transmission segment, with 3,116 km of transmission lines and 14,372 MVA of transformation capacity including assets in operation and under construction. In centralized solar generation, two photovoltaic plants came into operation in 2022 totaling 70 MWp, all of which is marketed in the free market.



1.1. Corporate Structure of Energisa Group

Energisa Group's share control is exercised by Gipar S.A., controlled by the Botelho Family. The Company is listed in Level 2 Corporate Governance of B3 and its most liquid shares are traded under the symbol ENGI11 (Units-certificates comprising one common share and four preferred shares). In addition to these securities, it has shares traded under the symbols ENGI3 (common shares) and ENGI4 (preferred shares).

See below the simplified ownership structure of Energisa Group:



Voting Capital | CT - Total Capital

Notes: the interests shown in the table are direct or indirect interests of Energisa S.A.

FIA Samambaia - shareholding held directly and indirectly through investment vehicles.

Other noncontrolling interests - share position including treasury stock.

Gemini - holds 100% of LMTE, 85.04% of LTTE and 83.34% of LXTE, all TransCos.

Data as of 02/28/2023

2. Energisa - consolidated

2.1. Operating revenue

In 4Q22, consolidated net operating revenue excluding construction revenue amounted to R\$ 5,359.2 million, a decrease of 18.0% on 4Q21, primarily due to lower taxation and the nonapplication of rate tiers in the Distribution segment. YTD revenue amounted to R\$ 21,095.8 million, a decrease of 9.7 % over last year.

See below the net operating revenue by business line before intercompany eliminations and business combination:

Net revenue by business line Amounts in R\$ million	Quarter			Year		
	4Q22	4Q21 (restated)	Change %	2022	2021 (restated)	Change %
➤ Electricity distribution	6,061.2	6,635.5	- 8.7	24,092.0	24,619.6	- 2.1
➤ Electricity transmission	352.8	221.6	+ 59.2	1,714.7	971.1	+ 76.6
➤ (re) energisa	386.7	365.1	+ 5.9	1,374.2	1,209.6	+ 13.6
• Distributed generation	43.6	31.9	+ 36.5	142.3	85.1	+ 67.3
• Electricity trading	222.1	261.3	- 15.0	820.3	894.5	- 8.3
• Added value services	121.0	71.8	+ 68.5	411.6	230.0	+ 78.9
➤ Holding companies and other	101.9	77.3	+ 31.7	365.2	289.0	+ 26.4
(=) Total	6,902.5	7,299.5	- 5.4	27,546.0	27,089.2	+ 1.7
Intercompany eliminations and business combination	(240.8)	(187.2)	+ 28.7	(1,042.9)	(613.7)	+ 69.9
(=) Consolidated net revenue	6,661.7	7,112.3	- 6.3	26,503.1	26,475.5	+ 0.1
(-) Construction revenue *	1,302.5	576.9	+ 125.8	5,407.3	3,105.5	+ 74.1
(=) Consolidated net revenue, without infrastructure construction revenue	5,359.2	6,535.4	- 18.0	21,095.8	23,370.0	- 9.7

* Construction revenue: infrastructure construction revenue + transmission infrastructure maintenance and operation revenue + revenue from construction performance obligation margins + remuneration of the contract asset (electricity transmission).

Consolidated operating revenue is detailed in [appendix A.1](#) and the breakdown of operating revenue by distribution company can be seen [here](#).

Headlines:

Operating revenue in the distribution segment diminished by 8.7% in the quarter, primarily explained by the non-incidence of rate tiers in the quarter, reduction in ICMS rates and nonrecurrent effects of net invoiced invoicing, as demonstrated in item 3.1 below.

In the quarterly comparison for 2021 and 2022, total sales grew in MWh grew by 0.3%, primarily benefiting from milder weather and higher distributed generation sales. Sales growth is detailed in item 3.1.1.

In the Transmission segment, revenue growth is primarily explained by the acquisition of Gemini, completed in June 2022, adding revenue of R\$ 287.5 million in 4Q22.

At (re) energisa, Energisa Soluções was responsible for a R\$ 49.2 million increase in comparison with the fourth quarter of 2021, mainly because of new contracts in Solar O&M, Transmission O&M, Third-Party Works Management and electric asset automation. Renewable distributed energy expansion contributed R\$ 9.1 million in 4Q22.

2.2. Operating costs and expenses

Consolidated operating costs and expenses excluding construction costs amounted to R\$ 4,403.1 million in 4Q22, a reduction of 20.7% (R\$ 1,152.8 million) on 4Q21. In the year to date this amount is R\$ 16,543.2 million, 13.8% (R\$ 2,654.6 million) less than the same period last year.

See below the breakdown of the Company's consolidated operating costs and expenses:

Breakdown of operating expenses and costs Amounts in R\$ million	Quarter			Year		
	4Q22	4Q21 (restated)	Change %	2022	2021 (restated)	Change %
1 Non Manageable costs and expenses	3,049.1	4,354.0	- 30.0	11,782.9	14,969.9	- 21.3
1.1 Electricity purchased for resale	2,527.1	3,929.9	- 35.7	9,852.8	13,234.6	- 25.6
1.2 Charges for using the transmission and distribution system	522.0	424.2	+ 23.1	1,930.1	1,735.3	+ 11.2
2 Manageable costs and expenses	1,024.3	770.2	+ 33.0	3,386.0	2,801.1	+ 20.9
2.1 PMSO	955.6	927.8	+ 3.0	2,938.5	2,877.7	+ 2.1
2.2 Provisions/Reversals	68.6	(157.6)	-	447.5	(76.6)	-
2.2.1 Contingencies	21.5	(247.5)	-	75.9	(322.5)	-
2.2.2 Expected credit losses	47.1	89.9	- 47.6	371.6	245.9	+ 51.1
3 Other revenue/expenses	329.6	431.6	- 23.6	1,374.3	1,426.7	- 3.7
3.1 Amortization and depreciation	315.3	325.5	- 3.1	1,274.5	1,243.0	+ 2.5
3.2 Other revenue/expenses	14.3	106.1	- 86.5	99.8	183.7	- 45.6
Total (exc. infrastructure construction cost)	4,403.1	5,555.9	- 20.7	16,543.2	19,197.7	- 13.8
Infrastructure construction cost	1,020.2	458.3	+ 122.6	4,238.2	2,651.2	+ 59.9
Total (including infrastructure construction cost)	5,423.3	6,014.2	- 9.8	20,781.4	21,848.9	- 4.9

See below the PMSO by business line:

PMSO by business line Amounts in R\$ million	Quarter			Year		
	4Q22	4Q21 (restated)	Change %	2022	2021 (restated)	Change %
➤ Electricity distribution ⁽¹⁾	853.0	871.5	- 2.1	2,781.0	2,815.5	- 1.2
➤ Electricity transmission	53.7	8.9	+ 502.8	120.8	38.9	+ 210.4
➤ (re) energisa	164.4	120.7	+ 36.2	509.7	305.6	+ 66.8
• Distributed generation	43.1	25.3	+ 70.3	113.9	63.4	+ 79.6
• Electricity trading	7.7	5.2	+ 47.9	19.6	12.4	+ 57.7
• Added value services	113.5	90.1	+ 25.9	376.2	229.7	+ 63.7
➤ Holding companies and other	113.2	100.7	+ 12.4	336.8	284.4	+ 18.4
(=) Total	1,184.3	1,101.8	+ 7.5	3,748.3	3,444.4	+ 8.8
Intercompany eliminations	(228.7)	(174.0)	+ 31.4	(809.8)	(566.7)	+ 42.9
(=) Energisa consolidated	955.6	927.8	+ 3.0	2,938.5	2,877.7	+ 2.1

⁽¹⁾ Operating costs and expenses by DisCo are detailed [here](#)

PMSO (Personnel, Materials, Services and Other)

PMSO expenses increased by 3.0% (R\$ 27.9 million), to R\$ 955.6 million in the quarter. Our PMSO grew by 2.1% compared with 2021 (R\$ 60.8 million). In both periods, these expenses were lower than the accumulated inflation.

Consolidated PMSO	Quarter			Year		
	4Q22	4Q21 (restated)	Change %	2022	2021 (restated)	Change %
Personnel	553.2	511.6	+ 8.1	1,547.5	1,467.3	+ 5.5
Post-employment benefits	14.7	26.8	- 45.4	55.7	66.4	- 16.1
Material	75.9	74.9	+ 1.3	312.0	253.2	+ 23.2
Outsourced services	236.0	231.5	+ 2.0	788.3	817.5	- 3.6
Other	75.9	82.9	- 8.5	235.0	273.3	- 14.0
✓ Contractual and regulatory penalties	3.7	11.0	- 66.6	24.5	12.1	+ 102.6
✓ Contingencies (settlement of civil claims)	-	19.8	-	-	121.9	-
✓ Others	72.2	52.1	+ 38.4	210.6	139.3	+ 51.1
Total consolidated PMSO	955.6	927.8	+ 3.0	2,938.5	2,877.7	+ 2.1

The main changes in PMSO expenses are detailed below:

✓ **Personnel and Retirement Benefits**

In 4Q22, personnel and retirement benefit expenses amounted to R\$ 567.9 million, an increase of 5.5% in relation to 4Q21, deriving mainly from the:

- (i) R\$ 67.5 million increase in the item payroll and related charges due to staff upsizing;
- (ii) R\$ 21.4 million increase in the item Profit Sharing;
- (iii) R\$ 19.5 million increase in the item benefits, medical and dental expenses and meal benefits;
- (iv) R\$ 5.6 million addition to additional expenses as a result of the Gemini acquisition;
- (v) R\$ 49.4 million increase in personnel costs capitalization, in line with higher investments;
- (i) R\$ 35.5 million decrease in labor compensation which has been recorded under Other expenses, in the provision for judicial contingencies since 1Q22.

✓ **Material**

In 4Q22, materials expenses amounted to R\$ 75.9 million, practically unchanged on 4Q21.

- (i) R\$ 8.4 million increase in technical and safety materials;
- (ii) R\$ 2.7 million increase in fleets due to the higher fuel and lubricant cost;
- (iii) R\$ 9.2 million decrease in other materials, including a R\$ 4.4 million decrease in fuel expenses due to the decommissioning of UTE Guaribá, in EMT's concession.

✓ **Services**

To comply with the requirements of the Electric Sector Accounting Handbook (MCSE), the items Legal Records and Publications, Disclosing Information to Consumers, Reprography and Telecom have been reallocated from Services to Others. This effect limited this item's growth, which reached R\$ 236.0 million in 4Q22, 2% more than 4Q21.

The main impacts on this item in the quarter were:

- (i) R\$ 33.2 million increase in service expenses as a result of the Gemini acquisition, partly offset by lower revenue hedging, customer service and IT/Telecom expenses and higher capitalization in the quarter.

✓ **Other**

Other expenses amounted to R\$ 75.9 million in 4Q22, a decrease of 8.5% on 4Q21, deriving mainly from the:

- (i) R\$ 20.0 million decrease in civil and tax claim compensation as a result of reclassifying contingencies in Provisions/Reversal;
- (ii) R\$ 10.9 million decrease in regulatory and punitive fines;
- (iii) R\$ 14.9 million increase in the item IT/Telecom to comply with the MCSE reclassification; and
- (iv) R\$ 9.0 million increase in Insurance and Tax expenses.

Provisions/Reversals

Legal claims

4Q22 was impacted by consolidated contingencies of R\$ 21.5 million in provisions compared with a reversal of R\$ 247.5 million in the same period of the previous year.

The net result of the changes in the period can be explained as follows:

- (i) reversal of R\$ 156.0 million in consolidated Energisa S.A. in 4Q21, due to the adjustment of the business combination (PPA) of the Rondônia concession (R\$ 172 million);
- (ii) reversals of civil and labor claims resulting from court settlements in probable cases recording a discount in relation to the provision (R\$ 45.8 million).

To comply with the requirements of the Electric Sector Accounting Handbook (MCSE), from January 2022 all payments regarding labor claims have been recorded under Provisions, formally recorded under Personnel and Other.

Expected credit losses for doubtful accounts ("PPECLD")

In 4Q22, the PPECLD was R\$ 47.1 million, representing a reduction of 47.6% compared with the R\$ 89.9 million in 4Q21. Following the introduction of the water shortage tier, the average invoice ticket in 2021 was higher than in 2022, which explains the favorable performance in 4Q22. The subsidiary EMR also launched the new Credit

Receivables Investment Fund ("FIDC"), with PPECLD of R\$ 19.0 million being reversed in October 2022.

Item 26 presents the PPECLD performance at DisCos.

2.3. EBITDA

EBITDA amounted to R\$ 1,553.8 million in the quarter, an increase of 9.1% on the same quarter last year. Growth in 2022 was 19.2% higher than in 2021, amounting to R\$ 6,996.2 million. The EBITDA Margin was 23.3% in the quarter compared to 20.0% in the same period of 2021. This performance has been consistent each year, sustaining compound growth over the last 5 years of 26.1%, including EBITDA without non-cash and nonrecurrent effects.

EBITDA by business line Amounts in R\$ million	Quarter			Year		
	4Q22	4Q21 (restated)	Change %	2022	2021 (restated)	Change %
➤ Electricity distribution	1,319.2	1,208.1	+ 9.2	5,865.1	5,432.3	+ 8.0
➤ Electricity transmission	195.9	87.5	+ 123.9	978.1	352.8	+ 177.3
➤ (re) energisa	23.4	(44.3)	-	106.3	(9.0)	-
• Distributed generation	(1.4)	6.6	-	26.4	21.9	+ 20.7
• Electricity trading	18.7	(25.9)	-	43.5	(26.2)	-
• Added value services	6.0	(25.0)	-	36.5	(4.6)	-
➤ Holding companies and other	(19.0)	(25.9)	- 26.6	18.2	(0.5)	-
Business combination	34.3	198.4	- 82.7	28.5	94.0	- 69.7
(=) EBITDA	1,553.8	1,423.7	+ 9.1	6,996.2	5,869.6	+ 19.2
(+) Revenue from interest on overdue energy bills	94.7	109.8	- 13.8	409.6	454.8	- 9.9
(=) Adjusted EBITDA covenants	1,648.4	1,533.5	+ 7.5	7,405.8	6,324.3	+ 17.1
EBITDA Margin (%)	23.3	20.0	+ 3.3 p.p.	26.4	22.2	+ 4.2 p.p.

The EBITDA in this quarter is influenced primarily by the following nonrecurring and noncash effects:

- (i) R\$ 149.6 million as a result of the distribution VNR (R\$ 240.4 million in 4Q21)
- (ii) R\$ 207.2 million as a result of the corporate transmission EBITDA (R\$ 87.5 million in 4Q21)
- (iii) R\$ 151.2 million as the nonrecurrent effects of uninvoiced revenue in 4Q22 (R\$ 226.1 in 4Q21). These amounts refer to adjustments for the 1st, 2nd and 3rd quarters of each year. The total restatement adjustment for 2021 was R\$322.5 million, as per Note 3.3;
- (iv) R\$ 0.9 million as a result of EMR's FIDC effect in 2022 (R\$ 95.0 million in 2021).

If the aforesaid nonrecurring and noncash effects were excluded and replaced by the cash effect on the TransCos' Regulatory EBITDA of R\$ 93.1 million, the Adjusted recurring EBITDA in the quarter would be R\$ 1,440.3 million, 8.3% more than last year.

See below the consolidated adjusted recurrent adjusted EBITDA in the quarter and YTD:

Description Amounts in R\$ million	Quarter			Year		
	4Q22	4Q21 (restated)	Change %	2022	2021 (restated)	Change %
(=) EBITDA	1,553.8	1,423.7	+ 9.1	6,996.2	5,869.6	+ 19.2
(-) Concession financial asset (VNR - Distribution)	149.6	240.4	- 37.8	469.9	686.3	- 31.5
(-) Corporate EBITDA TransCos	207.2	87.5	+ 136.8	987.9	352.8	+ 180.1
(+) Regulatory EBITDA TransCos	93.1	8.4	+ 1,014.8	317.7	79.8	+ 298.0
(=) Adjusted EBITDA	1,290.1	1,104.1	+ 16.8	5,856.1	4,910.3	+ 19.3
Nonrecurring effects	152.1	226.1	+ 16.8	0.9	95.0	+ 19.3
(+) Uninvoiced Revenue (Note 3.3)	151.2	226.1	- 33.2	-	-	-
(-) FIDC	0.9	-	-	0.9	95.0	- 99.0
(=) Recurrent adjusted EBITDA	1,440.3	1,330.3	+ 8.3	5,855.1	4,815.3	+ 21.6

Note 1: Positive amounts reduce the result, while negative amounts increase the result.

Note 2: Amounts attributed to Uninvoiced Revenue in the quarters denote amounts recorded in 4Q22 not attributed to this quarter.

2.4. Finance result

In 4Q22 the net finance result comprised net finance costs of R\$ 924.4 million, an increase of 25.9% compared with the R\$ 734.4 million in 4Q21.

Finance income/loss Amounts in R\$ million	Quarter			Year		
	4Q22	4Q21 (restated)	Change %	2022	2021 (restated)	Change %
Finance revenue	379.2	331.1	+ 14.5	1,613.4	1,430.2	+ 12.8
Revenue on short-term investments	175.7	107.7	+ 63.2	685.4	242.5	+ 182.6
Interest on overdue energy bills	94.7	109.8	- 13.8	409.6	454.8	- 9.9
Financial restatement of regulatory assets (CVA)	12.4	41.4	- 70.1	132.5	37.6	+ 252.6
Restatement of recoverable tax credits	9.7	4.5	+ 116.6	50.7	14.9	+ 241.5
Monetary restatement of judicial bonds	19.5	12.4	+ 58.1	68.1	48.7	+ 39.8
Restatement of effects of excluding ICMS from the Pis and Cofins calculation base (*)	70.6	47.1	+ 50.0	295.0	602.0	- 51.0
(-) Pis/Cofins on finance revenue	(25.6)	(25.6)	+ 0.1	(107.5)	(95.9)	+ 12.1
Other finance revenue	22.1	34.0	- 34.8	79.6	125.7	- 36.7
Finance costs	(1,303.5)	(1,065.5)	+ 22.3	(4,196.4)	(2,527.8)	+ 66.0
Debt charges - Interest	(654.6)	(699.1)	- 6.4	(2,274.2)	(1,415.9)	+ 60.6
Debt charges - Monetary and exchange variance	33.8	17.7	+ 90.9	(161.5)	(482.0)	- 66.5
Derivative financial instruments (Swap)	(278.1)	155.0	-	(885.5)	510.2	-
Adjustment to present value	(21.7)	(36.6)	- 40.8	(44.2)	(78.1)	- 43.5
Mark-to-market of derivatives	(152.4)	(243.4)	- 37.4	(496.5)	(109.0)	+ 355.6
✓ Swap MtM	93.2	(117.4)	-	(233.9)	(440.7)	- 46.9
✓ MTM Subscription Bonus	-	(303.4)	-	(61.9)	(116.6)	- 46.9
✓ MTM Stock option plan (EPM)	(245.5)	177.4	-	(200.7)	448.3	-
Mark-to-market of debt securities	(77.3)	78.2	-	222.6	354.0	- 37.1
Financial restatement of regulatory liabilities	(15.0)	(82.7)	- 81.8	(39.2)	(72.6)	- 45.9
Restatement PEE and R&D	(3.4)	(2.1)	+ 62.4	(14.1)	(7.9)	+ 79.8
(-) Transfer to orders in progress	28.8	15.1	+ 90.0	163.6	39.2	+ 316.8
Incorporation of grids	41.4	4.7	+ 773.7	139.6	(45.4)	-
Restatement of effects of excluding ICMS from the Pis and Cofins calculation base (*)	(72.0)	(47.1)	+ 52.8	(295.2)	(602.0)	- 51.0
Other finance costs	(133.0)	(225.3)	- 41.0	(511.6)	(618.4)	- 17.3
Finance income/loss	(924.4)	(734.4)	+ 25.9	(2,583.0)	(1,097.5)	+ 135.3

(*) In FY 2021, the electricity distribution subsidiaries recognized all the credits regarding the exclusion of ICMS from the PIS and Cofins calculation base. The same amount was charged to non-current liabilities. The amounts have been duly restated according to the variance of the Selic interest rate since the initial calculation period, while in 2022 the amounts are only restated for the variance of the 12-month Selic base interest rate. Asset and liability restatement basically cancels each other out.

In 4Q22 the finance result is basically due to the following movements:

- Revaluation of MtM on EPM's share call option as result of higher interest rates, projected dividends payment flow and the subsequent event in February 2023, where an additional R\$ 1.38 billion was contributed to EPM, with the call option exercise term extended from 2026 to 2032. The effect in 4Q22 was a negative R\$ 245.5 million and R\$ 200.7 million in 2022;
- Decrease in finance costs in 4Q22 compared with the previous year as result of exercising the subscription bonus underlying the 7th debentures issuance in August/2022. This operation represented a finance cost of R\$ 303.4 million in 4Q21;
- R\$ 68.0 million of additional revenue as a result of interest on short-term investments. In 4Q21, the Selic rate closed at 9.25% p.a. compared with 13.75% p.a. in 4Q22.

In YTD 2022, the net finance income reflected net finance costs 135.3% higher than in 2021, amounting to R\$ 2,583.0 million, primarily explained by the higher expenses related to call option mtm (EPM).

2.5. Net income for the period

In the quarter the consolidated net income was R\$ 382.9 million, 16.5% more than the same period last year.

The segment amounts were determined prior to the business combination.

Net income for the period by business line Amounts in R\$ million	Quarter			Year		
	4Q22	4Q21 (restated)	Change %	2022	2021 (restated)	Change %
➤ Electricity distribution	587.1	570.6	+ 2.9	2,581.4	2,862.6	- 9.8
➤ Electricity transmission	29.4	27.1	+ 8.3	361.0	181.2	+ 99.2
➤ (re) energisa	(2.5)	(39.2)	- 93.6	15.1	(31.4)	-
• Distributed generation	(12.9)	(1.6)	+ 724.8	(13.3)	3.0	-
• Electricity trading	9.8	(18.3)	-	16.3	(21.5)	-
• Added value services	0.6	(19.3)	-	11.8	(13.0)	-
➤ Holding companies and other	(203.1)	(249.6)	- 18.7	(349.3)	51.2	-
Business combination	(28.0)	19.7	-	(180.2)	(248.8)	- 27.6
(=) Net income for the period	382.9	328.6	+ 16.5	2,428.0	2,814.8	- 13.7
Net income margin (%)	5.7	4.9	+ 0.8 p.p.	9.2	10.6	- 1.5 p.p.

If the nonrecurrent and non-cash effects shown in the table below were excluded, the recurring adjusted net income for the quarter would be R\$ 535.1 million, R\$ 138.8 million more than in the same period last year. The YTD recurring adjusted net income was R\$ 1,722.1 million, 4.4% above that recorded in the same period last year.

See below nonrecurrent and noncash effects in the quarter and YTD, net of tax:

Amounts in R\$ million Net income	Quarter			Accumulated		
	4Q22	4Q21 (re-stated)	Change %	2022	2021 (re-stated)	Change %
(=) Net income for the period	382.9	328.6	+ 16.5	2,428.0	2,814.8	- 13.7
(-) Concession financial asset (VNR - Distribution)	117.2	188.3	- 37.8	368.2	538.1	- 31.6
(-) Corporate net income - TransCos	36.9	27.1	+ 36.0	395.2	181.2	+ 118.1
(+) Net regulatory income/loss - TransCos	(62.9)	(19.5)	+ 222.3	(204.4)	7.1	-
(=) Adjusted net income for the period	165.9	93.7	+ 77.1	1,460.2	2,102.6	- 30.6
Nonrecurring effects						
(-) MTM Stock option plan (EPM)	(245.5)	177.4	-	(200.7)	448.3	-
(-) MtM 7 th issuance subscription bonus	-	(303.4)	-	(61.9)	(116.6)	- 46.9
(+) Uninvoiced Revenue (Note 3.3) (*)	124.3	176.6	- 29.6	-	-	-
(-) FIDC	0.6	-	-	0.6	120.9	- 99.5
(=) Adjusted recurrent net income for the period	535.1	396.3	+ 35.0	1,722.1	1,650.0	+ 4.4

These amounts refer to adjustments for the 1st, 2nd and 3rd quarters of each year. The total restatement adjustment for 2021 was R\$254.0 million, as per Note 3.3.

The breakdown of net income by company can be seen in [appendix A.3](#).

2.6. Capital structure

2.6.1. Financial operations in 4Q22

Energisa Group took out financing of R\$ 6,286.2 million in 2022, at an average cost of 110.8 % of the CDI rate and an average term of 3.54 years. Of this amount, the amount raised in the 4th quarter was R\$ 1,821.6 million.

Over recent years the parent company Energisa S.A. has issued infrastructure debentures under Law 12.431, to finance the investments of its DisCos. The funds were passed through to the subsidiaries by way of mirror debentures, with a private distribution, details of which can be seen in [appendix A.4](#).

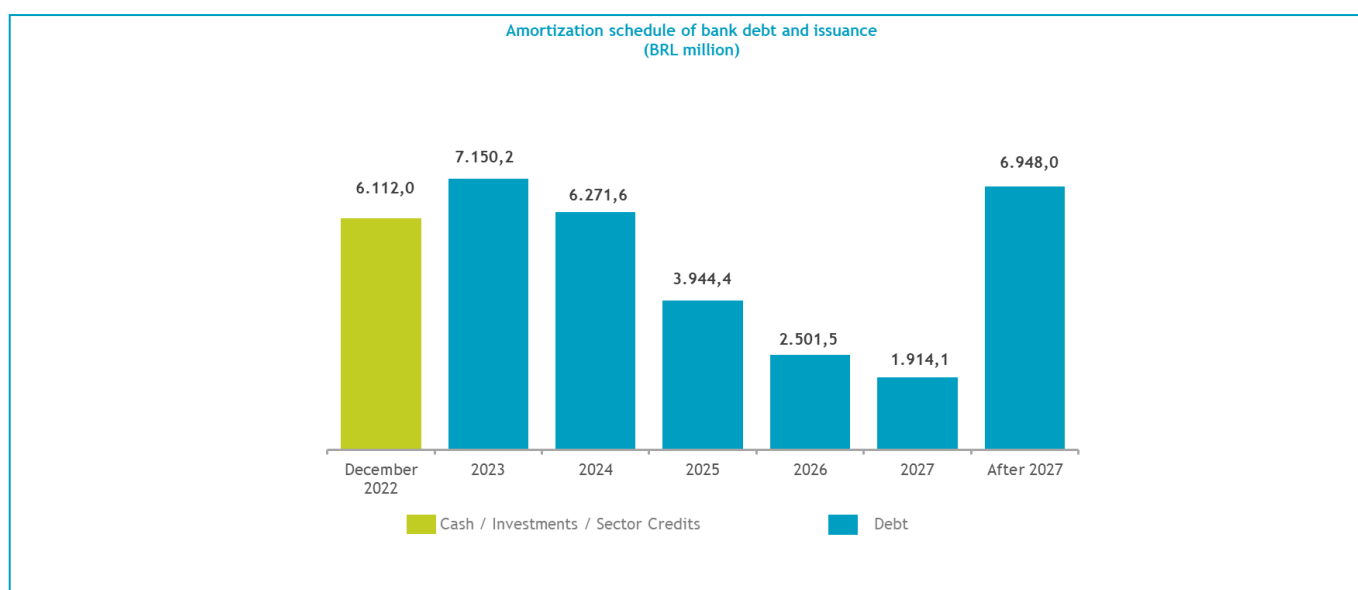
See below funding by company and issuance type for YTD 2022:

Company	Issue type	Total Amount (R\$ millions)	Average Cost (p.a.)	Average Term (years)
ALSOL, ECOM, EMS, EMT, ENF, ERO, ESE, ESOL and ESS	Law 4131	2,579.0	111.9%	2.07
EMR, EMS, EMT, EPB, ERO, ESA, ESE, ESS, ETE and ETO	ICVM 476 Debentures	2,302.0	111.5%	4.65
ETE, EMR, EMS, ESS and ETO	Commercial Paper	1,100.0	112.3%	3.40
ETT	BNDES	66.5	94.2%	9.61
ETT and EAC	CCB	238.7	89.7%	7.56
Total		6,286.2	110.8%	3.54

2.6.2. Cash and debt

The consolidated position of cash, cash equivalents, short-term investments and sector credits amounted to R\$ 6,112.0 million as of December 31, against R\$ 6,326.2 million as of September 30, 2022. We emphasize that these balances include credits relating to the Energy Development Account (CDE), Fossil Fuel Consumption Account (CCC) and the Memorandum Account for A parcel amounts (CVA), in the amount of a positive R\$ 163.7 million as of December 31, against R\$ 335.0 million as of September 30, 2022.

The net debt as of December 31 less sector credits amounted to R\$ 22,181.9 million, compared with R\$ 21,095.4 million in September and R\$ 20,840.7 million in June 2022. As a result, the ratio between net debt and adjusted EBITDA (covenants) rose from 2.8x in September to 3.0x in December 2022. The covenant limits for 2022 are 4.25 times.



See below the short- and long-term debt net of financial resources (cash, cash equivalents, short-term investments and sector credits):

Description Amounts in R\$ million	Parent company			Consolidated		
	12/31/2022	09/30/2022	06/30/2022	12/31/2022	09/30/2022	06/30/2022
Current	893.5	1,105.7	2,282.0	7,682.2	7,708.3	7,648.1
Loans and borrowings	317.2	190.2	188.5	3,534.0	3,592.0	2,856.1
Debentures	321.6	695.0	942.7	3,104.4	3,280.0	2,914.4
Debt charges	226.8	191.5	132.5	511.3	407.9	305.9
Tax financing and post-employment benefits	1.6	1.2	1.2	60.9	72.5	78.3
Derivative financial instruments, net:	26.4	27.7	1,017.1	471.7	356.0	1,493.5
✓ (-) Assets: derivative financial instruments	-	-	-	(195.4)	(269.4)	(225.7)
✓ (+) Liabilities: derivative financial instruments	26.4	27.7	1,017.1	667.1	625.5	1,719.1
Noncurrent	5,745.6	4,894.0	5,143.6	20,611.6	19,713.3	20,185.6
Loans, financing and leasing	1,297.4	1,462.7	1,457.6	10,162.1	9,663.9	9,664.6
Debentures	4,706.8	3,931.8	4,141.3	11,412.2	11,085.5	11,788.6
Tax financing and post-employment benefits	9.7	9.7	9.5	269.4	330.1	320.3
Derivative financial instruments, net:	(268.3)	(510.2)	(464.7)	(1,232.1)	(1,366.2)	(1,587.9)
✓ (-) Assets: derivative financial instruments	(270.0)	(511.8)	(466.2)	(1,252.0)	(1,395.6)	(1,606.2)
✓ (+) Liabilities: derivative financial instruments	1.7	1.6	1.5	19.9	29.4	18.3
Total debts	6,639.1	5,999.8	7,425.7	28,293.9	27,421.6	27,833.7
(-) Cash and cash equivalents:	4,279.8	4,349.7	4,258.1	5,948.3	5,991.2	6,114.7
✓ Cash and cash equivalents	42.3	19.1	27.4	916.2	438.3	825.0
✓ Money market and secured funds	4,237.5	4,330.6	4,230.8	5,032.1	5,552.9	5,289.7
Total net debts	2,359.3	1,650.1	3,167.6	22,345.6	21,430.5	21,718.9
(-) CDE Credits	-	-	-	259.2	256.9	238.1
(-) CCC Credits	-	-	-	188.1	139.9	138.2
(-) CVA Credits ⁽¹⁾	-	-	-	(283.6)	(61.8)	502.0
Total net debts less sector credits	2,359.3	1,650.1	3,167.6	22,181.9	21,095.4	20,840.7
Relative Indicator						
Adjusted EBITDA Covenant 12 months	-	-	-	7,405.8	7,565.8	7,358.3
Net debt / Adjusted EBITDA Covenants 12 months ⁽²⁾	-	-	-	3.0	2.8	2.8

(1) These credits consist of sector financial assets and liabilities. | (2) Adjusted EBITDA Covenants = EBITDA + Interest on energy bills.

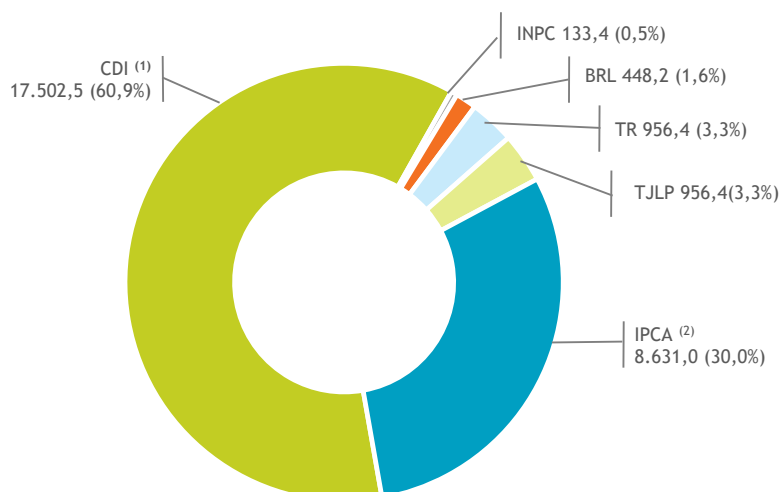
Total net debt less sector credits rose by R\$ 1,086.5 million compared with September 2022.

Further information and details about the companies' indebtedness can be seen in the Notes to the financial statements available at <https://ri.energisa.com.br/>

2.6.3. Cost and average debt tenor

The average gross debt tenor remained at 3.9 years at the end of December 2022, in line with that recorded in September 2022, and the average cost of the gross debt fell 0.22 percentage points, closing the period at 13.87% (103.19% of the CDI rate) against 14.09% (103.19% of the CDI rate) in September 2022.

Breakdown of the Bank debt and issuances consolidated by index (R\$ million)



(1) Dollar and Euro debt converted to CDI, without a hedge cap.

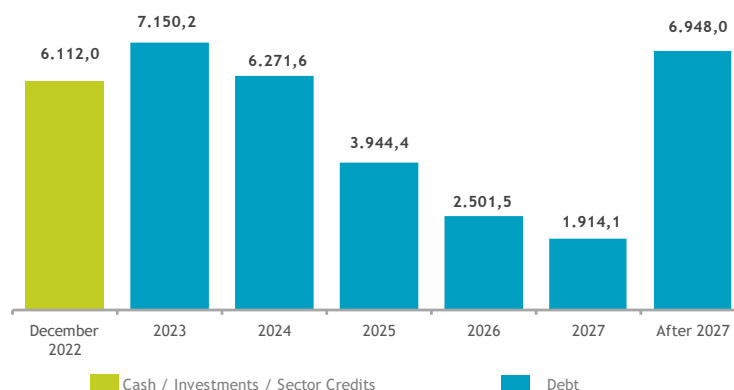
(2) Around 65.2% of the debt indexed to IPCA has been swapped for the CDI rate.

Note: The foreign currency debt is subject to swaps for the CDI rate and other currency hedge instruments.

2.6.4. Debt repayment schedule

The repayment schedule for consolidated loans, financing, debt charges and debentures vis-à-vis cash as of December 31, 2022 is shown in the graph below. Here it is worth noting that until the publication of these Financial Statements, according to Subsequent Events (items 8.4, 8.5 and 8.6 below), the Group received a capital increase in subsidiaries in the order of R\$ 1.4 billion and debt raising/rollover from order of R\$ 1.8 billion.

Schedule for amortization of bank debt and issuance
(R\$ millions)



2.7. _Ratings

See below Energisa S/A's current ratings issued by the agencies Standard & Poor's, Moody's and Fitch Ratings:

Branch	Domestic Rating/Outlook	Global Rating/Outlook	Latest report
Standard & Poor's	brAAA (stable)	BB- (stable)	Jul/22
Moody's	AA+ br (stable)	-	Aug/22
Fitch Ratings	AAA (bra) (stable)	BB+ (stable)	Jun/22

2.8. Investments

In 4Q22 Energisa and its subsidiaries made investments of R\$ **Error! Vínculo não válido.**5 million, 46.0% more than in the same period of the previous year. The highest increases are for companies that will undergo a rate-setting review in 2023 (EMS, EMT, ESE, EAC and ERO) and Alsol. The total investment in the year was R\$ 6,529.7 million, 55.4% more than in the same period of the previous year.

Investments made by business line were:

Investment Amounts in R\$ million	Total Investment					
	4Q22	4Q21 (re-stated)	Change %	2022	2021 (re-stated)	Change %
➤ Electricity distribution	1,157.0	919.5	+ 25.8	4,702.6	3,079.3	+ 52.7
➤ Electricity transmission	111.6	125.3	- 10.9	592.0	823.0	- 28.1
➤ (re) energisa						
➤ Distributed Generation	386.8	54.1	+ 614.6	842.8	190.7	+ 342.0
➤ Electricity trading	0.1	0.1	- 21.9	0.3	0.2	+ 40.6
➤ Services	5.0	10.9	- 53.8	26.9	29.8	- 9.7
➤ Holding companies and other	32.9	50.4	- 34.7	365.0	77.6	+ 370.2
(=) Total	1,693.5	1,160.3	+ 46.0	6,529.7	4,200.7	+ 55.4

Investments by company are broken down in [appendix A.5](#).

2.9. Cash flow

Consolidated cash flow and balance of cash and cash equivalents Amounts in R\$ million	Quarter		Year	
	4Q22	4Q21 (restated)	2022	2021 (restated)
Net Cash from operating activities	2,998.5	(537.4)	5,685.8	881.7
(i) Cash provided by operating activities	2,777.4	2,608.1	5,936.2	5,184.2
(ii) Changes in assets and liabilities	221.1	(3,145.5)	(250.4)	(4,302.5)
Net cash provided by investment activities	(2,308.5)	(2,987.8)	(5,094.1)	(2,793.6)
Net cash provided by financing activities	(598.9)	3,105.3	(449.0)	1,623.3
Increase (decrease) in cash (a)	91.2	(420.0)	142.7	(288.6)
Opening cash and cash equivalents (b)	825.0	1,193.5	773.5	1,062.1
(=) Closing cash and cash equivalents (a + b)	916.2	773.5	916.2	773.5
(+) Balance of short-term investments and sector credits	5,887.9	5,863.4	5,887.9	5,863.4
(=) Closing balance of cash and cash equivalents	6,804.1	6,636.9	6,804.1	6,636.9

2.10. Capital market

Traded on B3, the Energisa shares with the greatest liquidity ENGI11 - Units (consisting of 1 common share and 4 preferred shares) gained 7.6% in 4Q22, and closed the year quoted at R\$ 41.11 per Unit. Over the same period, the main stock exchange index, Ibovespa, shed 4.7%, while the IEE index grew 3.1%. See below the market indicators of Energisa's shares at the end of the quarter.

See below the market indicators of Energisa's shares at the end of the year:

	Dec/22	Dec/21	Change %
Market indexes			
Enterprise value (EV - R\$ million) ⁽¹⁾	39,964.10	37,859.09	5.6%
Market value at the end of the year (R\$ million)	18,029.60	16,763.69	7.6%
Average daily volume traded - Units (R\$ million)	90.98	80.58	12.9%
Share prices			
ENGI11 (Unit) closing price at the end of the year (R\$ /Unit)	44.21	41.11	7.6%
ENGI3 (ON) closing price at the end of the year (R\$ /share)	14.05	13.00	8.1%
ENGI4 (PN) closing price at the end of the year (R\$ /share)	7.45	7.02	6.1%
Relative indicators			
Dividends paid per unit - UDM	1.16	2.53	-54.2%
Net Income per Unit - UDM	5.95	6.90	-13.7%
Total return to Units shareholder (TSR) - UDM %	10.37%	-6.44%	-2.02 p.p.
Market value / equity (times)	1.53	1.99	-22.8%

(1) EV = Market value (R\$/share vs. number of shares) + consolidated net debt.

(2) The net income used to compile the indicator Net Income over Unit is the Corporate net income.

2.11. Dividends

Based on the results achieved in 2022, Energisa management allocated R\$ 710 million for payment of dividends (R\$ 0.3482 per common and preferred share or R\$ 1.741 per Unit) from net income for the year, with the following having been paid: (i) R\$ 472.2 million on September 30, 2022 (R\$ 0.232 per share or R\$ 1.16 per Unit). The supplementary dividend of R\$ 325.7 million (R\$ 0.16 per common and preferred share or R\$ 0.80 per Unit) to be paid on March 30, 2023, based on the share position at March 21, 2023. The total dividends for the financial year represent 42.7% of the Parent Company's net income, adjusted for the legal reserve.

3. Distribution

3.1. Operating revenue

Combined net revenue, i.e., before intercompany eliminations and excluding infrastructure construction revenue, amounted to R\$ 20,324.1 million in 2022, a decrease of 9.9% on 2021. Revenue amounted to R\$ 5,140.5 million in 4Q22, a decrease of 18.4% on the same quarter last year. The factors most driving this revenue reduction in the quarter were:

- (i) Under energy revenue, in addition to the downturn in captive sales between the quarters, the rate practiced in 4Q21 benefited from the water shortage rate tier surcharge, which did not exist in the 4th quarter of 2022.
- (ii) Under Sales to Distributors, comprised of energy settlements in the spot market, where energy services are valued at PLD, the variance of 60.6% is a result of the lower PLD which approximated the floor in 4Q22, averaging R\$ 55.70/MWh, compared to the average of R\$ 134.63/MWh for 4Q21;
- (iii) Net uninvoiced sales to consumers was impacted by nonrecurrent effects of R\$ 151.2 million in 4Q22 and R\$ 226.1 million in 4Q21. These amounts refer to adjustments for the 1st, 2nd and 3rd quarters of each year. The total restatement adjustment for 2021 was R\$322.5 million, as per Note 3.3.
- (iv) The account concession financial asset, VNR, decreased due to the rising inflation witnessed in 2021, which was not repeated latterly in 2022.

See below the net operating revenue by consumption sector of the DisCos:

Net revenue by consumption sector Amounts in R\$ million	Quarter			Year		
	4Q22	4Q21 (restated)	Change %	2022	2021 (restated)	Change %
(+) Electricity revenue (captive market)	5,994.5	7,120.3	- 15.8	24,600.0	24,507.4	+ 0.4
✓ Residential	3,055.9	3,568.9	- 14.4	12,383.3	12,336.4	+ 0.4
✓ Industrial	377.9	457.2	- 17.3	1,596.6	1,624.6	- 1.7
✓ Commercial	1,178.2	1,475.6	- 20.2	5,001.1	5,022.4	- 0.4
✓ Rural	645.0	755.1	- 14.6	2,643.7	2,650.2	- 0.2
✓ Other sectors	737.5	863.7	- 14.6	2,975.3	2,873.7	+ 3.5
(+) Electricity sales to distributors	100.2	254.4	- 60.6	390.8	1,313.7	- 70.3
(+) Net unbilled sales	(73.4)	(179.8)	- 59.2	51.5	320.1	- 83.9
(+) Electricity network usage charges	612.3	538.0	+ 13.8	2,329.0	1,984.5	+ 17.4
(+) Infrastructure construction revenue	920.7	333.1	+ 176.4	3,767.9	2,069.2	+ 82.1
(+) Creation and amortization of financial sector assets and liabilities	252.8	800.0	- 68.4	883.9	2,559.7	- 65.5
(+) Subsidies for services awarded under concession	395.9	350.2	+ 13.0	1,520.6	1,396.5	+ 8.9
(+) Concession financial asset	149.5	240.4	- 37.8	469.8	686.3	- 31.5
(+) Other revenue	45.1	50.7	- 10.9	202.8	199.9	+ 1.4
(=) Gross revenue	8,397.6	9,507.3	- 11.7	34,216.3	35,037.3	- 2.3
(-) Sales taxes	1,608.6	2,356.1	- 31.7	7,189.2	8,488.6	- 15.3
(-) Rate tier deductions	-	12.4	-	-	(17.0)	-
(-) Sector charges	727.9	503.2	+ 44.6	2,935.1	1,946.1	+ 50.8
(=) Combined net revenue	6,061.2	6,635.5	- 8.7	24,092.0	24,619.6	- 2.1
(-) Infrastructure construction revenue	920.7	333.1	+ 176.4	3,767.9	2,069.2	+ 82.1
(=) Combined net revenue, without infrastructure construction revenue	5,140.5	6,302.4	- 18.4	20,324.1	22,550.4	- 9.9

3.1.1. Electricity market

In the fourth quarter of 2022 (4Q22), Energisa Group's total (free and captive) electricity consumption in the concession areas of Energisa Group's 10 DisCos was 9,593.2 GWh, a decrease of 0.3% on the same period last year. Note that before the pre-pandemic period (4Q19), aggregate consumption grew by 2.1%.

The best performing segments in the quarter were the Residential (+1.5% or 56.9 GWh) and Other (+3.4% or 40.9 GWh) segments. 7 out of 10 DisCos saw residential consumption grow, driven by rural client migration under Resolution 901 and energy recovered by combating losses. The result of the sector Other was primarily affected by the government authorities segment, as classes resumed in public schools and civil servants went back to work. Industrial consumption rose slightly by 0.5 GWh, spearheaded by the food sector whose result was shackled by negative impacts from the oil and gas, nonmetallic mineral and footwear sectors.

Consumption only dropped in the sectors Rural, (-9.1% or 88.6 GWh), driven by the combined factors of greater distributed generation, the diminished need for irrigation this year and migrations under Resolution 901 and Commercial (-2.3% or 41.8 GWh), primarily impacted by the greater use of distributed generation and milder weather in certain regions.

Regarding distributed generation, the installed capacity in the Group's concession areas totaled 2,827 MW, equivalent to 10% load. In 4Q22, 363 MW of installed capacity were added.

Sales performance in FY 2022

Energisa Group's captive and free electricity consumption (37,519.8 GWh) rose 1.4% in 2022, in relation to the same period last year. The Group's sales grew in 7 out of 12 months in the year. Concessions in North Brazil performed strongly, thanks to the warmer weather and higher contractual charges, and the low comparison base in 2021. The Commercial sector (+3.2%) and energy consumption by the Government sector (+16.5%) boosted the year-to-date result by 50%.

7 of our 11 DisCos reported a positive performance in 2022, in overall consumption namely: EMT (+2.5%), ERO (+6.4%), ETO (+5.3%), EAC (+4.5%), EMR (+0.5%), EBO (+0.4%) and EPB (0.1%). ERO and ETO had the highest rates in the Group, with most sectors growing, especially Residential, Industrial and Commercial. The concessions of ESE (-1.8%), EMS (-0.8%) and ESS (-0.8) closed the year with more modest results, chiefly impacted by the Rural, Residential and Industrial sectors.

The following concessions performed well in the Industrial sector: EMT with food products and metallic and nonmetallic minerals, ERO with the highest growth rate in 10 years, thanks to the smaller base in 21 (-4.8%) and driven by the food, nonmetallic mineral and metal sectors, ETO influenced by nonmetallic minerals, fertilizers and food products, EMG thanks to food products, metallic minerals and textiles and EAC thanks to food and nonmetallic minerals.

The Commercial sector was driven by the resumption of activities and increased consumption in warehouses and food distributors, especially at ETO, ERO, EAC and EMT.

Public sector consumption rose across our 11 concessions, driven by the resumption of activities, with a focus on the education sector and government offices.

In the Residential sector, 8 DisCos showed growth, except for EMR, ESS and EMS, which were impacted by milder and rainier weather and an increase in distributed generation. ERO, EMT and ETO stood out, influenced mainly by the low base and hot weather.

Elsewhere, the Rural sector contracted 8.2% or 314.0 GWh, with over 60% of the drop generated in the Midwest and Northeast regions, impacted by lower use of irrigation due to rainier weather and greater use of distributed generation. In the South and Southeast, consumption was affected by the migrations under Resolution 901 and by variations in citrus and coffee production.

Description Amounts in GWh	Quarter			Year		
	4Q22	4Q21	Change %	2022	2021	Change %
Residential	3,778.1	3,721.2	+ 1.5	14,463.0	14,244.9	+ 1.5
Industrial	1,940.5	1,940.0	+ 0.0	7,852.3	7,627.7	+ 2.9
Captive Industrial	461.5	492.1	- 6.2	1,911.0	1,986.2	- 3.8
Free Industrial	1,479.0	1,447.9	+ 2.1	5,941.3	5,641.5	+ 5.3
Commercial	1,742.4	1,784.2	- 2.3	6,943.4	6,729.2	+ 3.2
Captive Commercial	1,370.0	1,454.6	- 5.8	5,506.3	5,543.7	- 0.7
Free Commercial	372.4	329.6	+ 13.0	1,437.1	1,185.5	+ 21.2
Rural	884.0	972.6	- 9.1	3,494.5	3,808.6	- 8.2
Captive Rural	848.3	924.7	- 8.3	3,352.5	3,668.4	- 8.6
Free Rural	35.8	47.9	- 25.3	142.0	140.2	+ 1.3
Other	1,248.1	1,207.1	+ 3.4	4,766.6	4,590.4	+ 3.8
Captive Other	1,150.4	1,123.0	+ 2.4	4,406.3	4,334.8	+ 1.7
Free Other	97.6	84.2	+ 16.0	360.3	255.6	+ 40.9
1 Energy sales to captive consumers	7,608.4	7,715.6	- 1.4	29,639.1	29,777.9	- 0.5
2 Energy associated with free consumers (TUSD)	1,984.8	1,909.6	+ 3.9	7,880.6	7,222.8	+ 9.1
3 Captive sales + TUSD (1+2)	9,593.2	9,625.2	- 0.3	37,519.8	37,000.7	+ 1.4
4 Unbilled sales	100.1	43.1	+ 132.5	26.2	8.2	+ 219.6
5 Captive sales + TUSD + unbilled supply (3+4)	9,693.4	9,668.3	+ 0.3	37,545.9	37,008.9	+ 1.5

Energy sales by concession area can be seen [here](#).

3.1.2. Consumption by sector

The leading sectors for consumption in 4Q22 were:

- **Residential Sector (39.4% of total captive + free sales):** increase of 1.5% (56.9 GWh) in consumption. The DisCos behind the increase in the quarter were ETO (10.4% or 30.2 GWh), EMT (3.3% or 29.2 GWh), ERO (4.3% or 16.9 GWh) and EMR (6.8% or 12.4 GWh) with the highest rises. Residential consumption was primarily driven by the migrations under Resolution 901, energy recovery and increased use of distributed generation..
- **Industrial sector (20.2% of total captive + free sales):** Industrial consumption rose slightly by 0.5 GWh, spearheaded by the concessions ETO (14.4% or 13.6 GWh), ERO (8.1% or 9.4 GWh) and EMT (0.9% or 4.8 GWh) which were driven by the food sector. On the flipside, the concessions ESE (-20.0% or -23.8 GWh), EMS (-2.1% or -7.6 GWh) and EBO (-3.3% or -1.4 GWh) saw consumption fall, primarily impacted by the oil and gas, nonmetallic mineral and footwear sectors.
- **Commercial sector (18.2% of total captive + free sales):** saw consumption drop by -2.3% (-41.8 GWh), with the result for the period being determined by the concessions of EMS (-9.9% or -27.9 GWh), ESS (-5.7% or -12.3 GWh) and EPB (-2.8% or -5.9 GWh). The Commercial result was primarily impacted by the greater use of distributed generation, the weather and the food sector.
- **Rural sector (9.2% of total captive + free sales):** contracted by 9.1% (-88.6 GWh), due to the concessions EMS (-14.3% or -21.5 GWh), EMT (-4.6% or -17.2 GWh) and EPB (-15.3% or -15.5 GWh), driven by the combined factors of greater distributed generation, the weather and Resolution 901.
- **Other sectors (13.0% of total captive + free sales):** growth of 3.4% (40.9 GWh), felt most at EMT (7.6% or 20.0 GWh), ERO (10.5% or 11.5 GWh) and EPB (3.6% or 6.7 GWh). The result of the sector Other was primarily affected by the government authorities segment, as classes resumed in public schools and civil servants went

back to work.

For further information please see our Bulletin - [click on the link](#)

3.1.3. Clients by concession operator

Energisa closed 4Q22 with 2.3% more consumer units than the same period last year.

Number of captive and free consumers by region

DisCo	Number of consumers								
	Captive			Free			Total		
	4Q22	4Q21	Change %	4Q22	4Q21	Change %	4Q22	4Q21	Change %
North	1,632,841	1,585,948	+ 3.0	258	228	+ 13.2	1,633,099	1,586,176	+ 3.0
ETO	650,631	632,721	+ 2.8	141	122	+ 15.6	650,772	632,843	+ 2.8
EAC	286,427	279,121	+ 2.6	41	36	+ 13.9	286,468	279,157	+ 2.6
ERO	695,783	674,106	+ 3.2	76	70	+ 8.6	695,859	674,176	+ 3.2
Northeast	2,619,575	2,560,644	+ 2.3	362	294	+ 23.1	2,619,937	2,560,938	+ 2.3
EPB	1,538,532	1,508,083	+ 2.0	153	127	+ 20.5	1,538,685	1,508,210	+ 2.0
ESE	847,588	824,012	+ 2.9	172	134	+ 28.4	847,760	824,146	+ 2.9
EBO	233,455	228,549	+ 2.1	37	33	+ 12.1	233,492	228,582	+ 2.1
Midwest	2,703,039	2,641,143	+ 2.3	917	750	+ 22.3	2,703,956	2,641,893	+ 2.3
EMT	1,597,977	1,556,997	+ 2.6	519	431	+ 20.4	1,598,496	1,557,428	+ 2.6
EMS	1,105,062	1,084,146	+ 1.9	398	319	+ 24.8	1,105,460	1,084,465	+ 1.9
South/South-east Region	1,451,676	1,426,639	+ 1.8	485	409	+ 18.6	1,452,161	1,427,048	+ 1.8
EMR	595,821	587,781	+ 1.4	144	115	+ 25.2	595,965	587,896	+ 1.4
ESS	855,855	838,858	+ 2.0	341	294	+ 16.0	856,196	839,152	+ 2.0
Total Energisa	8,407,131	8,214,374	+ 2.3	2,022	1,681	+ 20.3	8,409,153	8,216,055	+ 2.4

Energisa Group's residential segment expanded by 4.3% in the year, with 1,824,581 customers registered as Low Income. The number of social rate consumers (low income) stands at 26.0% of Energisa's residential units.

The breakdown of conventional and low-income residential consumers by region and concession area, the energy balance sheet and the portfolio of contracts by DisCo can be seen [here](#).

3.1.4. Electricity losses ("losses")

Total consolidated energy losses in 4Q22 were 12.38%, 0.85 p.p lower than the regulatory benchmark, maintaining a level below the benchmark for the seventh consecutive quarter. The result for the quarter was 0.51 p.p lower than the total losses recorded in 4Q21 and 0.14 p.p lower than in 3Q22. Note that in the last two years (after a more intense period of restrictions due to the pandemic in 4Q20), the reduction in total losses was 297 GWh.

Nine of Energisa Group's ten DisCos lowered their losses compared to the same period last year, and the group's consolidated total losses reached its lowest ever level (considering the period after the acquisition of EAC and ERO).

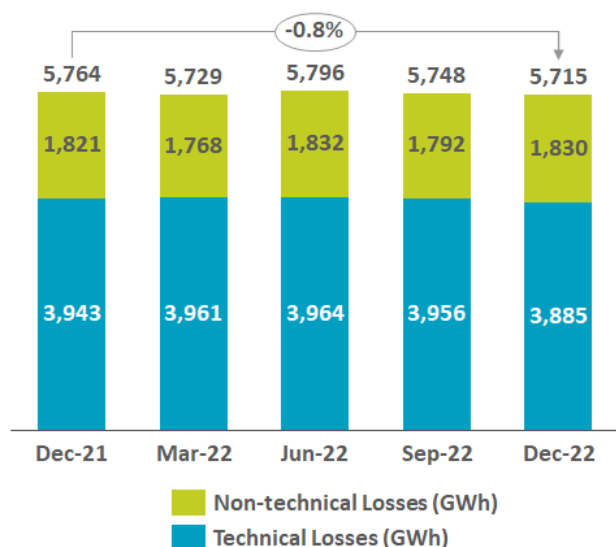
in comparison with the same period last year only ESE presented modest growth (+0.11 p.p), primarily attributed to the lower consumption by high-voltage consumers, which reduces the required energy, thereby impacting the indicator.

Nine of the group's DisCos closed the year below this regulatory benchmark, five with a difference exceeding 1 percentage point: EMR, EMS, ETO, ESS and EAC, with EAC managing to return an index 4.87 percentage points below the regulatory benchmark. EMT is almost within the regulatory limit, with a difference of only 0.04%. The result highlights the good performance of the companies acquired in 2018 and confirms the success of the strategy to combat losses implemented in all the group's DisCos.

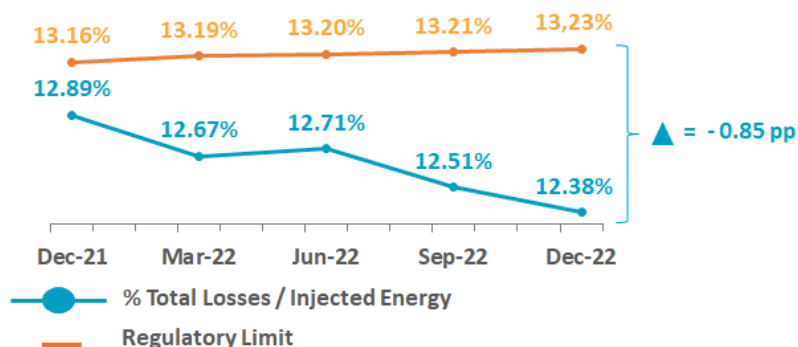
In the consolidated total of all DisCos, the distance to the regulatory limit is 0.85 p.p., our best ever performance,

with emphasis on the performance of ERO, which in 4Q22 presented its loss within the regulatory limit with an improvement of 1.85 percentage points compared to the end of 2021. Compared to the year before the privatization of ERO and EAC (Dec/2017), the improvement in total losses at ERO in the last five years was 5.68 percentage points, and at EAC it was 7.11 percentage points. The graph below demonstrates the performance of consolidated losses in recent quarters.

Technical Losses and Non-Technical Losses



Total Losses and regulatory limit



Energy Losses (% in past 12 months)

DisCo % Injected energy (12 months)	Technical losses (%)			Non-technical losses (%)			Total losses (%)			ANEEL
	Dec/21	Sep/22	Dec/22	Dec/21	Sep/22	Dec/22	Dec/21	Sep/22	Dec/22	
EMR	8.86	8.77	8.71	-0.49	-0.93	-0.84	8.37	7.84	7.87	9.97 ●
ESE	7.57	7.71	7.76	2.59	2.80	2.50	10.16	10.51	10.26	10.66 ●
EBO	5.61	5.55	5.53	0.50	0.28	0.32	6.11	5.84	5.86	6.11 ●
EPB	8.39	8.31	8.26	4.39	3.94	4.01	12.78	12.25	12.26	13.13 ●
EMT	8.94	8.99	8.90	4.68	4.79	4.59	13.62	13.78	13.49	13.45 ●
EMS	9.94	9.50	8.67	2.38	1.88	2.77	12.32	11.38	11.44	12.84 ●
ETO	10.51	10.58	10.52	1.62	1.25	1.13	12.13	11.82	11.65	13.69 ●
ESS	5.97	5.66	5.61	0.07	-0.29	0.03	6.05	5.37	5.64	6.82 ●
ERO	10.51	9.26	8.88	13.80	13.94	13.58	24.31	23.20	22.46	22.46 ●
EAC	9.96	9.92	9.97	6.52	5.38	4.98	16.47	15.31	14.95	19.82 ●
Energisa Consolidated	8.82	8.61	8.41	4.07	3.90	3.96	12.89	12.51	12.38	13.23 ●
Energisa Consolidated - GWh	3,942.7	3,955.5	3,885.2	1,821.3	1,792.3	1,830.0	5,764	5,748	5,714.96	3,942.7

Nb.: To calculate the percentages presented above, we considered the values of unbilled energy. The A1 Free Market was included in the calculation of the Total Realized and Regulatory Loss.

Energy losses in GWh by DisCo can be seen [here](#).

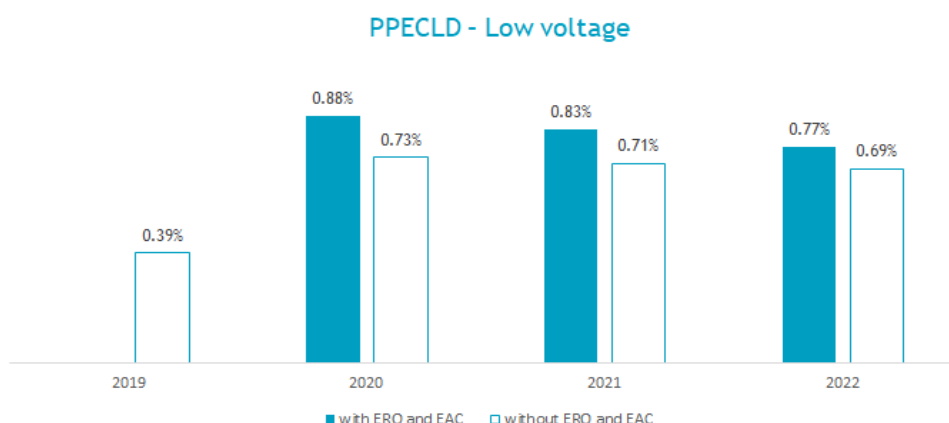
3.1.5. Delinquency management

3.1.5.1. Delinquency rate

Energisa's consolidated delinquency rate for the last 12 months was 1.37% in 4Q22, representing an increase of 0.46 percentage points over the same period of the previous year.

Excluding the nonrecurring effect of the FIDC issuance - reversal of R\$ 99.4 million in 2021 and R\$ 21.5 million in 4Q22 - the delinquency rate in 4Q22 would be 1.44% compared to 1.28% in 4Q21, and the difference would decrease to 0.16 p.p. The variance was impacted by the increase in the average ticket of bills due to the application of water stress tiers and the prohibition of suspending electricity supplies at EMT, due to the State Law of 2021, during the period Apr/21 to Jul/21. In addition, there was also an increase in the billed base resulting from increased consumption and loss recovery actions in ERO.

The performance in low-voltage sectors (residential, commercial, industrial and rural) helped drive down the delinquency rate in these sectors, as shown in the chart below:



*In 2019, the recently acquired DisCos EAC and ERO had different provision criteria and systems, therefore not comparable. In subsequent years, they were integrated and adapted to the group's metrics.

In the analysis of the results by company, the highlight was EMR, whose result was influenced by the FIDC issuance in 4Q22. At ERO, the factors behind the percentage increase in PPECLD are the higher invoice base, as a result of higher consumption and loss recovery initiatives - and the default of the state sanitation company. In addition to the non-recurring effect of the FIDC in 2021, EMT was impacted in the period because it was not allowed to cut off the electricity supply, as mentioned earlier.

PPECLD Indicator (% last 12 months)

PPECLD (% of <u>supply</u> billed)	In 12 months (%)		
	4Q22	4Q21	Change in p.p.
EMR	-1.16	0.28	-
ESE	0.82	0.70	+ 0.12
EBO	0.13	0.30	- 0.17
EPB	1.22	0.97	+ 0.25
EMT	1.93	0.99	0.95
EMS	1.50	1.17	+ 0.33
ETO	0.44	0.33	+ 0.11
ESS	0.21	(0.01)	-
ERO	3.69	1.99	+ 1.70
EAC	1.70	1.95	- 0.25
Energisa Consolidated	1.37	0.91	+ 0.46

Energisa Consolidated (exc. FIDC)

1.44

1.28

+ 0.16

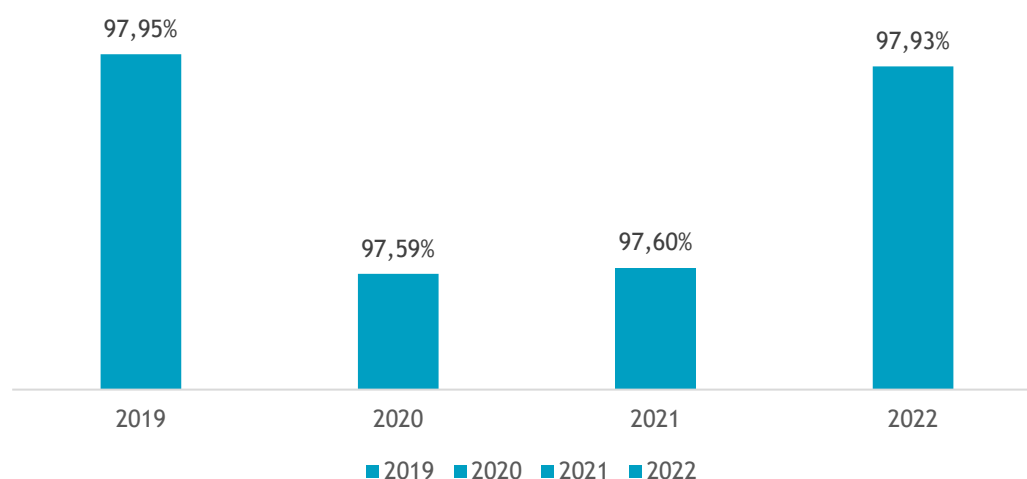
3.1.5.2. Collection fee

Energisa Group's 12-month consolidated collection rate in 4Q22 was 96.92%, 0.41 p.p. better than in 4Q21 (96.52%).

Despite the worsening economy in Brazil with increased household debt - according to Serasa Experian data, approximately 68 million people in the country are in default, representing 42.0% of the adult population - Energisa Group's performance shows that the actions implemented by Energisa in recent years, highlighted in the previous item, have had an effect and contributed to the 0.41 p.p. improvement in revenue in a more challenging economic environment.

The improvement in revenue can be observed in the mass market segment of Low Voltage classes (residential, commercial, industrial and rural), in which the group's performance returned to the same levels as the pre-pandemic period, as shown in the chart below.

Collection Rate - Low Voltage



The improvement is observed across all segments, especially the companies ERO and EAC which continue to catch up with the group's other companies.

Collection rate (%)	In 12 months (%)		
	Dec/22	Dec/21	Change in p.p.
EMR	98.60	98.30	+ 0.31
ESE	98.05	98.25	- 0.20
EBO	98.88	98.71	+ 0.18
EPB	97.76	97.00	+ 0.79
EMT	95.74	95.56	+ 0.18
EMS	97.47	96.99	+ 0.49
ETO	97.70	97.65	+ 0.05
ESS	99.08	98.86	+ 0.22
ERO	93.91	92.58	+ 1.44
EAC	95.02	93.50	+ 1.63
Energisa Consolidated	96.92	96.52	0.41

3.1.5.3. Service quality indicators for distribution services - DEC and FEC

In the main, the Group's DisCos performed well in 4Q22, maintaining the excellent performance in previous quarters and presenting indicators below the DEC and FEC regulatory limits at all concessions.

The following table presents the results for the period:

DisCo <u>Service quality indicators</u>	DEC (hours)			FEC (times)			DEC limit		FEC limit		
	Dec/22	Dec/21	Change(%)	Dec/22	Dec/21	Change(%)					
EMR	7.75	7.76	- 0.1	4.00	4.31	- 7.2	10.53	●	4.32	●	
ESE	9.68	10.55	- 8.3	4.82	4.80	+ 0.5	11.44	●	7.60	●	
EBO	3.41	3.14	+ 8.7	2.16	1.84	+ 17.3	12.64	●	8.37	●	
EPB	11.70	10.84	+ 7.9	4.04	4.03	+ 0.2	14.85	●	8.57	●	
EMT	16.72	20.00	- 16.4	7.31	8.16	- 10.4	19.50	●	14.90	●	
EMS	9.77	10.22	- 4.4	4.26	4.22	+ 0.9	11.13	●	7.52	●	
ETO	16.50	15.94	+ 3.5	5.93	6.15	- 3.6	20.98	●	13.77	●	
ESS	5.66	5.05	+ 12.1	3.41	3.25	+ 4.9	7.17	●	6.52	●	
ERO	21.22	25.34	- 16.3	8.23	10.74	- 23.4	27.08	●	18.63	●	
EAC	25.52	27.66	- 7.7	10.00	11.55	- 13.4	44.29	●	35.42	●	

Nb: The data presented is obtained from ANEEL databases and can be changed if requested by the regulator.

Headlines:

- EMT achieved its best ever historical series for both DEC and FEC. In December 2022 the DEC was 16.72 hours, down by 3.28 hours on December 2021, and FEC was 7.31 times, a 10.42% decrease, equivalent to 0.85 times, on 2021.
- Continuing its upward trend, ERO achieved its best ever historical series for both FEC of 8.23 times in December/22, a decrease of 2.51 times in relation to December 2021. We point out that in 1Q19 (first quarter under Energisa management), this figure was 18.18 times for FEC.
- ERO also achieved its best ever historical series for both FEC (10 times), presenting a decrease of 1.55 times in relation to December 2021. EAC also considerably improved this indicator in relation to 1Q19, up from 30.62 times.

3.1.6. Compensation account for Parcel A amounts (CVA)

The CVA is a regulatory mechanism introduced by Interministerial Ordinance 25/02 intended to record the changes in costs incurred on energy purchases, energy transportation and sector charges in the period between the DisCo's rate events. This mechanism aims to neutralize the effects of these costs, of "Parcel A" and the whole rate pass-through assured, on the DisCo's earnings.

3.1.7. Overcontracting

In addition to the R\$ 101.2 million recorded until 3Q22, Energisa Group recorded a negative balance of R\$ 41.8 million in 4Q22 for the year 2022, as well as R\$ 7.9 million related to the monetary restatement of the entire balance, resulting in a positive accumulated balance of R\$ 67.3 million.

3.1.8. Rate tiers

The "Rate Tier System" came into force in January 2015, which shows consumers the actual costs of electricity generation. This automatically passes through to end consumers the cost increase incurred by the DisCo whenever energy purchases are affected by more expensive thermal energy, thereby diminishing the financial burden between the rate adjustments. There are green, yellow, red and level-2-red rate tiers, which indicate whether electricity will cost more as a result of electricity generation conditions.

Energisa's consolidated revenue from rate tiers was R\$ 2.7 million, compared with R\$ 982.7 million in 4Q21. The green tier is currently in force, which means consumer rates do not increase, while in 2021 the water stress tier was in place.

3.1.9. Rate reviews and adjustments

In 2022, all Energisa Group's DisCos only went rate-adjusting processes, i.e., we did not have rate-setting reviews. The rate-setting review process monetarily restates the distribution company's required revenue, restates rates with the new forecast expenses on energy purchases, charges and energy transportation and recognizes finance costs recorded over the course of the previous year.

The effects for consumers deriving from the latest adjustment processes and rate review of each Energisa Group DisCo were as follows:

DisCo	Effect on Consumers (%)			Start of term	Monetary Restatement - adjustment events	Review Process
	Low Voltage	High and Medium Voltage	Medium			
EMR	+15.19	+21.51	+16.57	06/22/2022	IPCA	Annual Adjustment
ENF	+19.51	+17.78	+19.19	06/22/2022	IPCA	Annual Adjustment
ESE	+16.88	+14.76	+16.24	04/22/2022	IGP-M	Annual Adjustment
ESE extraordinary	-4.75	-3.80	-4.47	07/13/2022	IGP-M	Extraordinary Rate Adjustment
EBO	+9.85	+9.35	+9.72	02/04/2022	IGP-M	Annual Adjustment
EBO extraordinary	-5.34	-5.02	-5.26	07/13/2022	IGP-M	Extraordinary Rate Adjustment
EPB	+0.34	+3.49	+1.03	08/28/2022	IGP-M	Annual Adjustment
EMT	+21.62	+24.96	+22.55	04/08/2022	IGP-M	Annual Adjustment
EMT extraordinary	-1.40	-1.33	-1.38	07/13/2022	IGP-M	Extraordinary Rate Adjustment
EMS	+17.93	+18.81	+18.16	04/08/2022	IGP-M	Annual Adjustment
EMS extraordinary	-1.31	-1.27	-1.30	07/13/2022	IGP-M	Extraordinary Rate Adjustment
ETO	+14.53	+15.85	+14.78	07/04/2022	IPCA	Annual Adjustment
ESS	+8.92	+18.21	+11.52	07/12/2022	IPCA	Annual Adjustment
ERO	+21.40	+24.73	+22.09	12/13/2022	IPCA	Annual Adjustment
EAC	+14.74	+19.43	+15.58	12/13/2022	IPCA	Annual Adjustment

3.1.10. Regulatory remuneration base

The process of valuing assets of the regulatory remuneration base uses the VNR - New Replacement Value, which denotes the value at current market prices of an identical, similar or equivalent asset subject to replacement, which provide the same services and have the same capacity as the existing asset, including all the expenses necessary to install it.

The ratified net remuneration bases (BRL) of the electricity DisCos, adjusted for December/2022, are as follows:

DisCo	Regulatory BRL restated by the IPCA through December 2022 (R\$ millions)	Rate-Setting Review Date	Rate Cycle	WACC (before tax)	Next Rate-Setting Reviews
EMR	584.0	June/2021			June/2026
ENF	137.4	June/2021			June/2026
EBO	186.3	February/2021	5 th	10.62%	February/2026
EPB	1,955.0	August/2021			August/2026
ESS	1,234.9	July/2021			July/2026
ESE	1,040.7	April/2018			April/2023
EMT	4,516.0	April/2018	4 th	12.26%	April/2023
EMS	2,433.8	April/2018			April/2023
ETO	1,663.1	July/2020	5 th		July/2025
ERO	1,845.6	December/2020	4 th	11.10%	December/2023

EAC	702.0	December/2020			December/2023
Total	16,298.7				

The consolidated compensation base of the electricity DisCos extracted from the corporate financial information includes depreciation, write-offs and new additions, as shown below:

Description Amounts in R\$ million	Notes to the financial statements	2022	2021 (re-stated)	Change %
Concession financial asset	14	9,789.6	7,618.3	+ 28.5
Contractual asset - infrastructure under construction	15	1,671.9	1,247.9	+ 34.0
Intangible assets - concession agreement	18.1	14,492.9	14,023.8	+ 3.3
(-) Exclusion of asset appreciation determined in the purchase price allocation (PPA) of the business combination	18.1	(5,616.4)	(5,942.9)	+ 5.5
Total	-	20,337.98	16,947.05	+ 20.0

3.1.11. Parcel B

DisCo	Parcel B				
	DRA ⁽¹⁾	DRP ⁽²⁾	Change (R\$ million)	Change %	Review Process
EMR	259.8	291.2	31.4	+12.1	Annual Adjustment
ENF	51.4	56.7	5.3	+10.4	Annual Adjustment
ESE	603.4	672.7	69.3	+11.5	Annual Adjustment
EBO	90.3	103.5	13.1	+14.5	Annual Adjustment
EPB	815.3	892.9	77.6	+9.5	Annual Adjustment
EMT	2,348.9	2,665.1	316.1	+13.5	Annual Adjustment
EMS	1,379.0	1,582.8	203.7	+14.8	Annual Adjustment
ETO	716.2	803.0	86.8	+12.1	Annual Adjustment
ESS	449.5	499.6	50.1	+11.1	Annual Adjustment
ERO	735.2	785.4	50.2	+6.8	Annual Adjustment
EAC	316.6	339.0	22.5	+7.1	Annual Adjustment
Total	7,765.6	8,691.8	926.2	+11.9	

(1) DRA – Previous Reference Date: defined as the date the last rate process ratified by Aneel is effective from, be it an adjustment or rate review, which includes the costs incurred and revenue earned in the twelve months relating to the rate process.

(2) DRP – Processing Reference Date: the DRP is defined as the date the rate process under analysis to be ratified by Aneel is effective from, be it an adjustment or rate review, which includes the costs and revenue projected for the twelve months relating to the rate process.

Both use the same reference market and the ratio between the two therefore only shows the rate increase of the component.

3.1.12. Rate subsidy, low income and sub-rogation credits

Aneel authorized the pass-through of rate subsidies awarded to low-income consumers, rural irrigation consumers and public services, by way of the Energy Development Account (CDE), in accordance with Decree 7891 issued in 2013. These funds, in turn, were recorded as operating revenue via rates. The amounts, per DisCo, are the following:

Funds - Decree 7891 and Low Income (R\$ million)	Quarter			Year		
	4Q22	4Q21	Change %	2022	2021	Change %
EMR	19.5	20.5	- 4.9	83.3	80.2	+ 3.8
ENF ⁽¹⁾	0.8	1.5	- 45.5	6.9	7.0	- 0.7
ESE	32.7	28.4	+ 15.0	122.8	102.5	+ 19.7

EBO	5.5	5.4	+ 3.3	21.2	20.4	+ 4.0
EPB	58.4	58.2	+ 0.4	214.4	212.5	+ 0.9
EMT	120.0	96.3	+ 24.6	446.0	387.8	+ 15.0
EMS	64.7	56.3	+ 15.0	253.2	222.6	+ 13.8
ETO	34.6	34.4	+ 0.8	140.2	136.4	+ 2.8
ESS	29.7	31.4	- 5.2	118.5	122.4	- 3.2
ERO	21.6	13.3	+ 62.7	82.3	76.0	+ 8.3
EAC	8.4	4.7	+ 76.3	31.9	28.6	+ 11.5
Consolidated ETE	1.9	1.1	+ 70.7	6.8	4.4	+ 55.9
Consolidated ESA	395.9	350.2	+ 13.0	1,520.6	1,396.5	+ 8.9

(1) Due to the merger of ENF into EMG in November/2022, ENF's information covered an 11-month period when analyzing FY 2022 and 1 month when analyzing 4Q22.

3.2. Operating costs and expenses

Combined distribution operating expenses and costs excluding infrastructure construction revenue amounted to R\$ 4,036.1 million in 4Q22, a decrease of 24.2% (R\$ 1,152.8 million) on 4Q21. In the year to date this amount is R\$ 15,341.1 million, 14.7% (R\$ 1,351.7 million) less than the same period last year.

See below the breakdown of the DisCos' operating costs and expenses:

Breakdown of operating expenses and costs Amounts in R\$ million	Quarter			Year		
	4Q22	4Q21 (restated)	Change %	2022	2021 (restated)	Change %
1 Non Manageable costs and expenses	2,845.1	4,098.8	- 30.6	11,035.7	14,093.0	- 21.7
1.1 Electricity purchased for resale	2,304.9	3,667.8	- 37.2	9,043.2	12,335.1	- 26.7
1.2 Charges for using the transmission and distribution system	540.2	431.0	+ 25.3	1,992.5	1,758.0	+ 13.3
2 Manageable costs and expenses	917.9	906.4	+ 1.3	3,244.2	2,912.3	+ 11.4
2.1 PMSO	853.0	871.5	- 2.1	2,781.0	2,815.5	- 1.2
2.2 Provisions/Reversals	64.9	34.9	+ 85.9	463.2	96.8	+ 378.7
2.2.1 Contingencies	24.4	(47.1)	-	95.4	(143.3)	-
2.2.2 Expected credit losses	40.4	82.0	- 50.7	367.7	240.1	+ 53.2
3 Other revenue/expenses	273.2	317.6	- 14.0	1,061.3	974.2	+ 8.9
3.1 Amortization and depreciation	214.8	228.4	- 6.0	882.1	861.3	+ 2.4
3.2 Other revenue/expenses	58.3	89.2	- 34.6	179.2	112.9	+ 58.7
Total combined operating costs and expenses (1+2+3, without RCI)	4,036.1	5,322.8	- 24.2	15,341.1	17,979.5	- 14.7
Infrastructure construction revenue - RCI	920.7	333.1	+ 176.4	3,767.9	2,069.2	+ 82.1
Total combined operating costs and expenses (1+2+3, including RCI)	4,956.8	5,655.8	- 12.4	19,109.0	20,048.6	- 4.7

3.2.1. Non-Manageable operating costs and expenses

Non-manageable costs and expenses decreased by 30.6% in the quarter, to R\$ 2,845.1 million. The item "purchased energy" mainly influences the balance of energy supply and demand in the National Interconnected Grid (SIN), affecting the Difference Settlement Price (PLD), and the financial indexes used to adjust the prices of energy purchase contracts. In addition to pricing energy settlements in the CCEE spot market, the PLD also determines the expenses related to the hydrological risk (physical guarantee quotas, Itaipu and renegotiated plants) and other sector charges comprising the rate's A parcel, entailing full pass-throughs to consumers.

3.2.2. Manageable operating costs and expenses

Manageable costs and expenses rose by 1.3% (R\$ 11.5 million), to R\$ 917.9 million in the quarter.

PMSO (Personnel, Materials, Services and Other)

PMSO expenses fell by 2.1% (R\$ 18.4 million) to R\$ 853.0 million in the quarter, below the inflation of 5.78% accumulated in 2022.

See below PMSO expenses by distribution company:

Combined PMSO Amounts in R\$ million	Quarter			Year		
	4Q22	4Q21 (restated)	Change %	2022	2021 (restated)	Change %
Personnel	379.8	394.7	- 3.8	1,056.2	1,136.5	- 7.1
Post-employment benefit	12.9	25.5	- 49.3	49.3	61.5	- 19.9
Material	57.4	56.4	+ 1.7	244.1	204.0	+ 19.7
Outsourced services	335.4	319.7	+ 4.9	1,219.7	1,162.3	+ 4.9
Other	67.5	75.1	- 10.1	211.7	251.1	- 15.7
✓ Contractual and regulatory penalties	3.7	11.0	- 66.3	24.5	12.1	+ 102.8
✓ Contingencies (settlement of civil claims)	-	19.8	-	-	120.3	-
✓ Other	63.8	44.3	+ 43.9	187.3	118.7	+ 57.7
Total combined PMSO	853.0	871.5	- 2.1	2,781.0	2,815.5	- 1.2
IPCA / IBGE (12 months)	5.78%					
IGPM / FGV (12 months)	5.45%					

The main changes in PMSO expenses are detailed below:

✓ **Personnel and Retirement Benefits**

This quarter, the item personnel and retirement benefits decreased by 6.5% primarily due to the higher capitalization level of personnel expenses, and the reclassification of labor compensation which is now recorded under Other expenses, in the provision for judicial contingencies since 1Q22.

✓ **Material**

Material expenses rose by R\$ 0.9 million, primarily due to higher expenses at ERO (R\$ 3.2 million) partially offset by the R\$ 4.4 million decrease in fuel expenses due to the decommissioning of UTE Guaribá, in EMT's concession.

✓ **Services**

Outsourced service expenses rose by R\$ 15.6 million, primarily due to the increase at EMT (R\$ 15.8 million) in corrective and preventive maintenance services provided by the Shared Services Center and higher consultancy expenses, offset by lower Telecom expenses due to reclassifying Services to Other.

✓ **Other expenses**

Other expenses amounted to R\$ 67.5 million in the quarter, an increase of 10.0% (R\$ 7.6 million) compared with the same period last year, mostly due to:

- (i) R\$ 19.8 million decrease in civil and tax claim compensation as a result of reclassifying to contingencies;
- (ii) R\$ 8.0 million decrease in expenses on regulatory fines and penalties at EMT;
- (iii) R\$ 14.9 million increase as a result of reclassifying telecom services from Services to Other.

The PMSO figures for each company can be seen [here](#)

3.2.3. Other operating expenses

The group other operating expenses amounted to R\$ 338.0 million in the quarter, against R\$ 352.5 million in the same period of the previous year.

See below the DisCos' other operating expenses:

Other expenses - combined Amounts in R\$ million	Quarter			Year		
	4Q22	4Q21 (restated)	Change %	2022	2021 (restated)	Change %
Provisions/Reversals	64.9	34.9	+ 85.9	463.2	96.8	+ 378.7
Legal claims	24.4	(47.1)	-	95.4	(143.3)	-
Expected credit losses for doubtful accounts	40.4	82.0	- 50.7	367.7	240.1	+ 53.2
Other revenue/expenses	273.2	317.6	- 14.0	1,061.3	974.2	+ 8.9
Total combined	338.0	352.5	- 4.1	1,524.5	1,070.9	+ 42.4

Note: Negative figures represent reversals.

Expected credit losses for doubtful accounts ("PPECLD")

The PPECLD was R\$ 40.4 million, representing a reduction of 50.7% compared with 3Q21. The decrease in this item was due to a reversal of R\$ 634.9 million compared with a provision of R\$ 583.5 million. The main reductions took place at the DisCos: EMG (R\$ 16.3 million), EMT (R\$ 15.9 million) and ERO (R\$ 14.9 million).

Other revenue/expenses

In 2021, this item was impacted by R\$ 99.4 million related to the effects of the recoverable value of the receivables transferred to the FIDC, as per Note 32. Excluding this effect, the change would be a decrease of 1.1% in the year-over-year comparison.

3.3. EBITDA

The combined distribution EBITDA amounted to R\$ 1,169.7 million in the quarter, an increase of 20.9% on the same quarter last year. In YTD 2022 the combined distribution EBITDA amounted to R\$ 5,395.3 million, 13.7% more than the same period last year.

See below the DisCos' adjusted EBITDA:

Description Amounts in R\$ million	Quarter			Year		
	4Q22	4Q21 (restated)	Change %	2022	2021 (restated)	Change %
EMR	37.8	21.4	+ 76.5	168.6	151.0	+ 11.6
ENF ⁽¹⁾	2.5	8.7	- 71.5	27.3	32.0	- 14.8
ESE	109.8	114.9	- 4.4	435.7	409.9	+ 6.3
EBO	21.8	26.3	- 17.1	73.0	70.6	+ 3.5
EPB	144.6	143.0	+ 1.1	524.8	585.2	- 10.3
EMT	370.8	175.1	+ 111.8	1,879.8	1,422.0	+ 32.2
EMS	247.6	246.8	+ 0.3	1,089.2	912.9	+ 19.3
ETO	109.3	54.3	+ 101.5	496.7	394.7	+ 25.8
ESS	78.8	67.8	+ 16.3	314.6	301.5	+ 4.4
ERO	81.0	12.9	+ 527.2	268.6	237.5	+ 13.1
EAC	(34.4)	96.4	-	117.1	228.7	- 48.8
Total combined	1,169.7	967.6	+ 20.9	5,395.3	4,746.0	+ 13.7

(1) Due to the merger of ENF into EMG in November/2022, ENF's information covered an 11-month period when analyzing FY 2022 and 1 month when analyzing 4Q22.

If the nonrecurrent effects shown in the table below were excluded, the combined recurrent adjusted EBITDA for the quarter would have been R\$ 1,321.8 million, a 10.7% increase on the same period last year. The YTD combined recurrent adjusted EBITDA amounted to R\$ 5,396.2 million, 11.5% more than the same period last year.

Description (R\$ million)	Quarter			Year		
	4Q22	4Q21 (restated)	Change %	2022	2021 (restated)	Change %
(=) Combined adjusted EBITDA for the period	1,169.7	967.6	+ 20.9	5,395.3	4,746.0	+ 13.7
(+) Nonrecurring effects	152.1	226.1	- 32.7	0.9	95.0	- 99.0
(=) Combined recurrent adjusted EBITDA	1,321.8	1,193.8	+ 10,7	5,396.2	4,841.0	+ 11.5

The EBITDA figures per company are in [appendix A.2](#).

3.4. Net income for the period

In the quarter the consolidated net income was R\$ 587.1 million, 2.9% more than the same period last year.

See below the DisCos' profit (loss):

Income (loss) Amounts in R\$ million	Quarter			Year		
	4Q22	4Q21 (restated)	Change %	2022	2021 (restated)	Change %
EMR	8.1	(2.4)	-	52.3	57.8	- 9.4
ENF ⁽¹⁾	(0.3)	2.4	-	8.3	11.4	- 27.7
ESE	73.1	75.2	- 2.8	269.6	296.4	- 9.0
EBO	17.0	23.2	- 26.7	56.0	61.3	- 8.8
EPB	108.2	97.4	+ 11.1	355.0	444.2	- 20.1
EMT	227.3	130.3	+ 74.5	1,190.7	1,015.5	+ 17.2
EMS	122.9	133.1	- 7.7	556.8	560.8	- 0.7
ETO	64.3	(1.8)	-	267.9	220.1	+ 21.7
ESS	29.7	27.1	+ 9.4	130.5	142.5	- 8.4
ERO	(64.3)	(160.9)	- 60.0	(350.0)	(239.2)	+ 46.3
EAC	1.1	247.1	- 99.6	44.3	291.7	- 84.8
Total	587.1	570.6	+ 2.9	2,581.4	2,862.6	- 9.8

(1) Due to the merger of ENF into EMG in November/2022, ENF's information covered an 11-month period when analyzing FY 2022 and 1 month when analyzing 4Q22.

If the non-cash and nonrecurrent effects shown in the table below were excluded as well as the impacts on finance income, described in item 2.4, the combined recurrent adjusted net income for the quarter would be R\$ 594.8 million, 6.4% more than in the same period last year. The YTD combined recurrent adjusted net income amounted to R\$ 2,213.7 million, 9.5% less than the same period last year.

See below non-cash and nonrecurrent effects in the quarter:

Description (R\$ million)	Quarter			Year		
	4Q22	4Q21 (restated)	Change %	2022	2021 (restated)	Change %
(=) Net income for the combined period	587.1	570.6	+ 2.9	2,581.4	2,862.6	- 9.8
(-) Concession financial asset (VNR)	117.2	188.3	- 37.8	368.2	538.1	- 31.6
(+) Nonrecurring effects (*)	124.9	176.6	- 29.3	0.6	120.9	- 99.5
(=) Adjusted combined recurrent net income	594.8	559.0	+ 6.4	2,213.7	2,445.4	- 9.5

(*) according to item 2.3

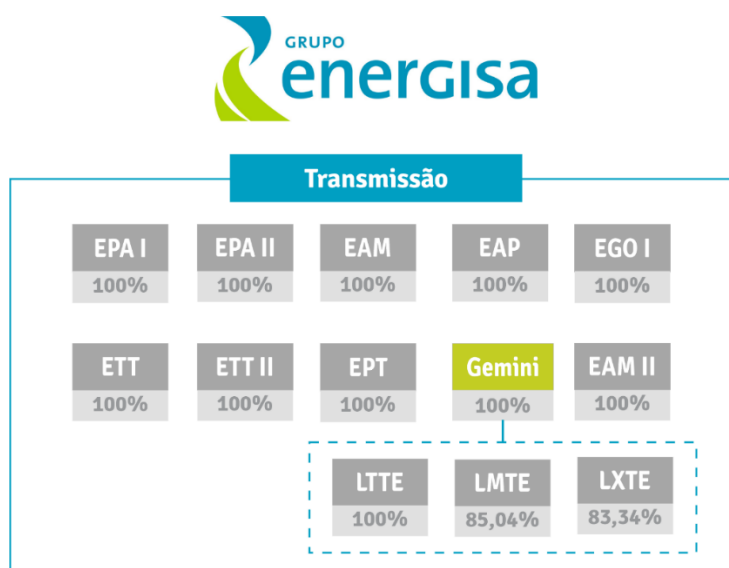
The EBITDA values per company are in Annex A.2.

4. Transmission

4.1. Overview

Energisa Group's activities also include energy transmission assets resulting from the acquisitions of 8 lots at auctions, from 2017 to 2022, 4 operating concessions were acquired via the secondary market in 2021 and 2022, totaling 12 transmission concessions with transmission lines of approximately 3,116,000 km and a transformation capacity of 14,372 MVA. The consolidated Annual Operational Revenue is R\$ 781.5 million, with an RAP of R\$ 742.6 million (2022-23 round) and fiber-optics revenue of R\$ 38.9 million.

See below the share ownership structure of Energisa Transmissão:



See below tables summarizing operational transmission concessions and concessions under construction of the Group:

Operational TransCos:

Name	Date contract signed	State	Length (Km)	Transformation capacity MVA	Start-up	Early delivery achieved	Capex realized/Acquisiti on Price (R\$ mm)	RAP Round 22-23 (R\$ mm)	Fiber-optics Revenue	Status
EGO I	Aug/17	GO	136 (CD)	1,344	Mar/20	17 months	255.9	49.7	-	Operational
EPA I	Aug/17	PA	296 (CD)	300	Nov/20	16 months	318.3	62.7	-	Operational
EPA II	Sep/18	PA	139 (CD/CS)	1,800	Dec/21	12 months	421.2	48.3 ^(e)	-	Operational
ETT	Mar/19	BA/TO	734 (CS)	850	Jan/23	15 months	756.2	79.9	-	Operational
EPT	Jun/16	MT	-	150	Jun/19	-	102.1	12.2	-	Operational
LMTE	Oct/08	AP/PA	685	1,000	Jun/13	-	-	142.2 ^(d)	22.2	Operational
LXTE	Oct/08	PA	508	1,500	Jun/13	-	802.7	156.4 ^(d)	16.7	Operational
LTTE	Dec/11	RJ/SP	258	4,200	Oct/17	-	-	75.2 ^(d)	-	Operational
Total			2,794	11,144			2,656.8	626.6	38.9	-

Ventures under construction:

Name	Date contract signed	State	Length (Km)	Transformation capacity MVA	Operational Start-up (Aneel)	Physical Progress ^(a)	Estimated Capex ^(b) (R\$ million)	RAP round 22-23 (R\$ millions)	Status
EAM	Mar/21	AM	365 (DC / CS)	2,728	Mar/26	50.4% ^(c)	1,027.5	79.9 ^(d)	Partial
ETT II	Sep/21	TO	-	200	Sep/24	18.72%	84.1	4.8	Under Construction
EAP	Mar/22	AP	10	300	Sep/25	7.72%	149.9	12.6	Under Construction
EAM II	Sep/22	AM	12.9	-	Aug/27	-	210.4	18.7	Under Construction
Total			387	3,228			2,471.9	116.0	-

Nb.: CD - Dual circuit / CS - Single circuit. (a) Physical progress data restated for December/2022 (b) Restated by the IPCA price index from the auction date + CAPEX optimization (except EAM I which does not include optimization) / (c) 30.04% of the status relates to the operational facilities of EAM / (d) Includes additional revenue.

Further information and details can be seen [here](#)

4.2. Headlines for the period

On December 22, 2022 releases were announced of transmission functions 1 and 2 of Energisa Tocantins Transmissora de Energia S.A ("ETT"), with the base date of function 1 commencing November 07, 2022 and the base date of function 2 commencing December 17, 2022. The function Transmission 1 encompasses the 230kV Dianópolis II - Palmas transmission line, Palmas substation and Dianópolis II substation (new). This section has 245 km of transmission lines and accounts for 37.0% of the venture's total RAP for the Company. The function transmission 2 encompasses the 230kV Dianópolis II - Gurupi transmission line, Gurupi substation and Dianópolis II substation. This section has 256 km of transmission lines and accounts for 37.4% of the venture's total RAP. This step of the works was completed 45 months after signing the concession agreement and the operation began 15 months before the regulatory start-up date. This also means that revenue flowed into Energisa Group ahead of schedule.

On January 26, 2023 the third and final transmission function was released with a base date of January 20, 2023. This function encompasses the 230kV Dianópolis II - Barreiras II transmission line, Barreiras II substation and Dianópolis II substation and has 232 km of transmission lines. This section was completed 46 months after signing the concession agreement and the operation began 14 months before the regulatory start-up date, adding 25.6% of the venture's total RAP for the Group. Total investment of R\$ 756.2 million was made in the venture.

4.3. Ratification of Annual Permitted Revenue (RAP) - 2022/2023 Round

On July 12, 2022 ANEEL published Ratifying Resolution 3.067/2022 which established adjustments by the IPCA price index of 11.74% to the Annual Permitted Revenues (RAP) of the transmission concessions for the 2022-2023 round, effective from July 01, 2022 to June 30, 2023. The annual permitted revenue of Energisa Group's TransCos is now therefore R\$ 742.6 million for the 2022-2023 round (R\$ 659.5 for the 2021/2022 round), as follows.

TransCos	Round 2021/2022	Round 2022/2023
Energisa Goiás (EGO)	44.4	49.7
Energisa Pará I (EPA I)	56.1	62.7
Energisa Pará II (EPA II)	43.3	48.3
Energisa Tocantins I (ETT I)	71.5	79.9
Energisa Amazonas (EAM)	71.5	79.9
Energisa Tocantins II (ETT II)	4.3	4.8
Energisa Amapá (EAP)	11.3	12.2
Energisa Amazonas II (EAM II)	17.7	18.7
Energisa Paranaíba (EPT)	11.3	12.6
Linhas Macapá (LMTE)	125.4	142.2
Linhas Xingú (LXTE)	139.7	156.4
Linhas Taubaté (LTTE)	63.4	75.2
Total	659.5	742.6

4.4. Main differences between the Corporate and Regulatory results

Two accounting methods are used to prepare the financial results of energy transmission companies in Brazil: 1) Corporate Financial Statements prepared in accordance with International Financial Reporting Standards (IFRS) issued by the International Accounting Standards Board (IASB), known as Corporate Results, based on the standards issued by the Brazilian Securities Commission that apply to the preparation of Financial Statements; and 2) Regulatory Financial Statements prepared in accordance with the Power Sector Accounting Manual issued by the National Electricity Regulatory Agency (ANEEL), known as regulatory results.

Revenue: In the corporate statements, investments made over the term of the concession are recorded as contract assets in the statement of financial position, and infrastructure construction revenue is recognized against profit or loss. The remuneration of the contract asset is also recorded based on the average financing rate for the project when the concession agreement is formalized. After going operational, infrastructure construction revenue is no longer recorded and the operational revenue from operations and maintenance services begins to be recognized. Furthermore, under regulatory accounting, investments are classified as property, plant and equipment and depreciated over their useful lives, with Revenue represented by receipts after the asset comes into operation (the Annual Permitted Revenue or RAP) recognized through invoicing over the term of the concession, in a similar way to revenue recorded in the operational cash flow.

Construction Cost: Under the corporate method, infrastructure construction costs, i.e. investments made during the preoperational period, are recognized in profit or loss, and do not exist under the regulatory accounting method.

Amortization and Depreciation: Under the corporate method, investments relating to concessions are recognized as a contractual asset in the statement of financial position. The property, plant and equipment recognized in the corporate result entails the Company's assets and not the concession. In the regulatory accounting method, investments made in the concession are recorded as property, plant and equipment and incur amortization/depreciation over their useful lives, limited to the concession agreement term.

IR/CSLL: These taxes are calculated in accordance with the results determined in each accounting recognition method as a consequence of temporary differences between the corporate and regulatory calculation bases, on which the respective deferred taxes are made.

Corporate Results

The adoption of IFRS 9 (CPC 48) or IFRS 15 (CPC 47) became mandatory from January 2018, and Energisa opted for IFRS 15 (CPC 47), in which the company will recognize revenue to depict the transfer of promised goods or services to customers in an amount that reflects the consideration to which the company expects to be entitled in exchange for those goods or services (recognition of Concession Contract Asset).

The contract assets include receivables for the implementation of infrastructure and revenue from the compensation of concession assets, measured at the present value of the future cash flows based on the average financing rate of the project when the concession agreement was formally made, pursuant to CPC 47.

Regulatory Result

As regards the Regulatory Financial Statements, prepared in accordance with the guidelines set out in the Power Sector Accounting Manual issued by ANEEL, all investments made to build transmission lines and substations are recorded as property, plant and equipment and the operating revenue the concession operators are entitled receive is called Annual Permitted Revenue (RAP) guaranteed by the concession agreement and restated annually for inflation.

Sections 2.3 and 2.5 of the consolidated results presents the EBITDA and Net Income, respectively, including the effects of the regularly accounting of TransCos, and describes how the nonrecurrent results differ from the corporate result.

4.5. Consolidated economic and financial results - Corporate vs. Regulatory

Main impacts on corporate results

ETE's consolidated corporate economic and financial performance has been summarized below:

IFRS Economic and Financial Performance Results - R\$ million	Quarter			Year		
	4Q22	4Q21	%	2022	2021	%
Infrastructure construction revenue	43.5	135.7	- 68.0	438.7	628.2	- 30.2
Efficiency gain on implementing infrastructure	272.1	(37.6)	-	310.6	(96.3)	-
Revenue from construction performance obligation margins	(13.1)	82.2	-	139.4	291.8	- 52.2
Operation and Maintenance Revenue	15.9	10.9	+ 44.9	51.1	27.2	+ 87.5
Concession asset remuneration	65.8	55.7	+ 18.2	702.0	185.4	+ 278.6
Other Operating Revenue	11.9	2.0	+ 488.8	24.5	5.3	+ 363.1
Total from Gross Revenue	396.0	249.0	+ 59.1	1,666.3	1,041.6	+ 60.0
Deductions from Revenue	(35.1)	(27.3)	+ 28.3	(128.2)	(70.5)	+ 81.8
Net Operating Revenue	361.0	221.6	+ 62.9	1,538.0	971.1	+ 58.4
PMSO	(54.2)	(8.9)	+ 509.1	(79.9)	(38.9)	+ 105.4
Construction Cost	(99.6)	(125.3)	- 20.5	(470.3)	(582.0)	- 19.2
Depreciation/Amortization	(0.2)	(0.1)	+ 243.8	(0.3)	(0.2)	+ 101.3
EBITDA	207.2	87.5	+ 136.8	987.9	352.8	+ 180.1
EBITDA Margin	57.4	39.5	+ 17.9 p.p.	64.2	36.3	+ 27.9 p.p.
Finance income/loss	(105.3)	(41.5)	+ 153.7	(350.4)	(91.9)	+ 281.3
Income and social contribution taxes	(64.7)	(18.8)	+ 244.8	(242.0)	(79.5)	+ 204.4
Net Income	36.9	27.1	+ 36.0	395.2	181.2	+ 118.1

Net Operating Revenue (corporate): In 4Q22, Energisa Transmissão de Energia S/A presented consolidated net corporate operating revenue of R\$ 361.0 million, growth of R\$ 139.3 million accounting for 62.9% compared with 4Q21 due to: (i) recognition of revenue from Gemini (R\$ 287.5 million) and Paranaíta (R\$ 9.0 million), companies acquired in June 2022 and February 2022 respectively; (ii) the impacts of inflation (11.74%) on the group company's RAP, as per ANEEL Ratifying Resolution 3.076/22; and (iii) the partial start of ETT operations in December 2022, which consequently reduced infrastructure construction revenue by R\$ 97.5 million.

Costs and expenses: PMSO reached R\$ 54.2 million, an increase of R\$ 45.3 million in 4Q22 compared to 4Q21. The increase is mainly due to: (i) the consolidation of Gemini's costs and expenses (company acquired in June 2022), mainly outsourced services (R\$ 35.3 million); and (ii) the increase in CAPEX in the EAM concession due to the new venture under construction. However, there was a reduction in the construction cost of ETT and EPA II due to the progress of the works and the start of operations in December 2022 and December 2021, respectively.

EBITDA and EBITDA Margin: the corporate EBITDA reached R\$ 207.2 million in the comparison between 4Q22 and 4Q21, an increase of R\$ 119.7 million due to revenue growth.

Finance Income/Loss: net finance costs amounted to R\$ 105.3 million in 4Q22, an increase of R\$ 63.8 million mainly due to the higher gross debt following the acquisition of the Gemini companies (R\$ 2.0 billion) and funding raised in the period by ETE (R\$ 350.0) and its subsidiary ETT (R\$ 281.6 million).

Net Income: In 4Q22, net income was R\$ 36.9 million, an increase of R\$ 9.8 million mainly due to the consolidation of the Gemini companies (acquired in June 2022), less the increase in finance costs, due to the increase in the Company's gross debt.

Main impacts of the regulatory result

Note: This section presents the corporate and regulatory results of the Company's transmission segment. The regulatory results aim to present an analysis of the regulatory/managerial performance of the TransCos, in accordance with transmission sector practices. It should not therefore be considered an official economic and financial report of the Company for the Brazilian Securities Commission (CVM), which follows the IFRS standards issued by the International Accounting Standards Board (IASB). The Regulatory Financial Statements (DCRs) presented here are audited annually by April 30 each financial year upon submission of the regulatory financial statements to ANEEL. Matters specifically related to the regulatory accounting disclosed before the conclusion of the DCRs are subject to change.

ETE's consolidated regulatory economic and financial performance has been summarized below:

Regulatory Economic and Financial Performance Results - R\$ million	Quarter			Year		
	4Q22	4Q21	%	2022	2021	%
Annual Permitted Revenue	162.2	18.5	+ 775.4	444.0	123.8	+ 258.6
Other Operating Revenue	-	-	-	-	-	-
Total from Gross Revenue	162.2	18.5	+ 775.4	444.0	123.8	+ 258.6
Deductions from Revenue	(15.3)	(1.2)	+ 1,182.6	(39.6)	(6.1)	+ 544.7
Net Operating Revenue	146.9	17.3	+ 747.4	404.4	117.7	+ 243.7
Costs and expenses	(53.8)	(9.0)	+ 499.0	(86.7)	(37.8)	+ 129.1
Amortization/Depreciation	(42.3)	(8.5)	+ 395.5	(114.6)	(30.5)	+ 275.5
EBITDA	93.1	8.4	+ 1,014.8	317.7	79.8	+ 298.0
EBITDA Margin	63.4	48.2	+ 15.2 p.p.	78.6	67.8	+ 10.7 p.p.
Finance income/loss	(105.3)	(14.1)	+ 645.6	(350.3)	(27.5)	+ 1,172.3
Income and social contribution taxes	(8.4)	(5.2)	+ 62.1	(57.2)	(14.7)	+ 289.3
Net Income	(62.9)	(19.5)	+ 222.3	(204.4)	7.1	-

Net operating revenue: In 4Q22 ETE reported regulatory net operating revenue of R\$ 146.9 million, R\$ 129.6 million more than in 4Q21 due to: (i) acquiring the concessions of Gemini Energy (LMTE, LXTE and LTTE) on June 10, 2022; (ii) acquisition of Energisa Paranaíta's concession in February 2022; (iii) the entry into operation of the concession Energisa Tocantins I in December 2022 (+R\$ 5.2 million); and (iv) the inflationary adjustment of 11.74% (IPCA) for the 2022/2023 round of the RAP (annual permitted revenue) in accordance with ANEEL Ratifying Resolution 3.076/22.

Costs and expenses: In 4Q22, this item was R\$ 53.8 million, an impact of R\$ 44.8 million compared to 4Q21 mainly due to the consolidation of the costs and expenses of the Gemini companies (acquired in June 2022) especially outsourced services (R\$ 35.3 million).

Amortization and Depreciation: this line amounted to R\$ 42.3 million, an increase of R\$ 50.8 million due to the start of operations at EPA II in 2021, the acquisition of assets of the Gemini companies in June 2022 and Paranaíta in February 2022.

EBITDA and EBITDA Margin: the Regulatory EBITDA was R\$ 93.1 million in 4Q22, an increase of R\$ 84.8 million on the amount recorded in 4Q21, mainly because of the effects explained on net operating revenue;

Finance Income/Loss: net finance costs amounted to R\$ 105.3 million in 4Q22, an increase of R\$ 91.2 million mainly due to the higher gross debt following the acquisition of Gemini (R\$ 2.0 billion) and funding raised in the period by ETE (R\$ 350.0 million) and its subsidiary ETT (R\$ 281.6 million).

Net Income/Loss: In 4Q22, the Company recorded a loss of R\$ 62.9 million, an impact of R\$ 43.4 million primarily explained by higher finance costs in the period.

5. (re) energisa

(re)energisa is the group's brand that represents its unregulated operations, such as decentralized generation services from (Alsol Energisa Renováveis) energy marketing (Energisa Comercializadora) in the free market and added value services (Energisa Soluções). Given an increasingly competitive market with multiple offers, the Group's diversification strategy includes offering an ecosystem of energy solutions to our customers.

The brand also materializes the company's one-stop shop approach to the market. The company's strategy is to spearhead the energy transformation, connecting people and companies to the best energy solutions in a sustainable and low-carbon economy.

5.1. Distributed generation

Alsol is the group's company that is primarily engaged in decentralized generation from solar farms connected to existing distribution grids using the electricity offsetting system introduced by Law 14.300/2022. The company builds and operates proprietary solar plants, in addition to developing proprietary systems for controlling and monitoring the various generation units, resulting in higher electricity productivity above that initially planned for each plant. The solar farms are intended for small- and middle-market businesses, and medium-size businesses purchasing low-voltage energy in the form of a joint-venture.

Alsol currently has 53 solar plants in operation, 32 of which are located in Minas Gerais, 9 in Mato Grosso, 11 in Mato Grosso do Sul, and 1 in Rio de Janeiro, totaling 188 MWp of installed capacity in 2022. In 4Q22, Alsol invested R\$ 386,8 million in the implementation of solar farms, adding 78 MWp of installed capacity in the period. In 2022, 128.4 MWp was added in 32 solar power plants.

Sanctioned on January 06, 2022, Law 14.300 provides the legal security needed to support the growth of distributed generation in Brazil. With this law being sanctioned, the vested right is valid for 25 years for ventures in operation and new ventures receiving permits up to 12 months after the publication of the Law.

Alsol's economic and financial performance has been summarized below:

Distributed Generation Amounts in R\$ million	Quarter			Year		
	4Q22	4Q21	Change %	2022	2021	Change %
Net revenue	26.5	17.4	+ 52.1	86.9	47.9	+ 81.5
PMSO	(26,1)	(10,8)	+ 140.6	(58.5)	(26.2)	+ 123,0
Costs and expenses ⁽¹⁾	(1.8)	0.8	-	(2.0)	0.2	-
EBITDA	(1.4)	6.6	+ 8.0 p.p.	26.4	21.9	+ 4.5 p.p.
Net income (loss) for the period	(12.9)	(1.6)	+ 723.5	(13.3)	3.0	-

(1) Includes amortization and depreciation.

In line with its expansion plan, the distributed generation division of (re)energisa reported net revenue of R\$ 26.5 million, a 52.1% increase on 4Q21, which consequently led its costs and expenses to rise to R\$ 26.1 million, an increase of R\$ 15.2 million compared to 4Q21.

EBITDA totaled R\$ 1.4 million negative in 4Q22 compared to R\$ 6.6 million in 4Q21. The Company recorded a loss of R\$ 12.9 million, due to the impact of delays in connection new solar power plants to the grid, initial expenses on recently constructed farms and the approval of LC 194 which reduced ALSOL's revenue base.

5.2. Electricity marketing

During the favorable rainy season starting, reservoirs reached 57.9% capacity at the end of December 2022 for SIN (National Interconnected Grid), the highest levels seen in the period since 2012. The PLD (Difference Settlement Prices) was therefore kept low in the quarter, with the average price for the period (Oct/22 to Dec/22) remaining at the regulatory floor of R\$ 55.70/MWh. This maintenance of low levels affected the market considerably, impacting energy pricing including medium-term products (2 years and above).

In respect of the consumption data published by the CCEE (Brazilian Electricity Trading Chamber), there was an increase of 2.7% in October, 1.2% in December and a reduction of 0.6% in November compared with the same period last year, with variations between the regulated and free systems.

20 contracts were closed in the fourth quarter, with a supply period of between 2022 and 2027, amounting to 124 GWh.

Description Amounts in GWh	Quarter			Accumulated		
	4Q22	4Q21	Change %	2022	2021	Change %
Sales to free consumers (ECOM)	1,351	1,092	+ 5.8	4,646	4,778	- 2.8

Comercializadora's economic and financial performance has been summarized below:

Comercializadora Amounts in R\$ million	Quarter			Year		
	4Q22	4Q21	Change %	2022	2021	Change %
Net revenue	222.1	261.3	- 15.0	820.3	894.5	- 8.3
PMSO	(7,7)	(5,2)	+ 47,9	(19,6)	(12,4)	+ 57.7
(-) Costs and expenses ⁽¹⁾	(195.6)	(282.0)	- 30.6	(757.3)	(908.3)	- 16.6
EBITDA	18.7	(25.9)	-	43.5	(26.2)	-
Net income (loss) for the period	9.8	(18.3)	-	16.3	(21.5)	-

(1) Includes amortization and depreciation.

The trading company presented net revenue of R\$ 222.1 million, a decrease of 15.0% compared to 4Q21 due to lower prices, which remained close to the PLD floor price. As a result, market liquidity reduced the opportunities for portfolio turnover, resulting in fewer operations and impacting the company's net revenue.

Other costs and expenses amounted to R\$ 195.6 million, a decrease of 30.6% compared to 4Q21, due to the lower liquidity in the market, as mentioned earlier, resulting in lower expected costs on the trading platform.

EBITDA totaled R\$ 18.7 million in 4Q22, an increase of R\$ 44.6 million compared to the same period of the previous year, and the net income reached R\$ 9.8 million in 4Q22, an increase of R\$ 28.1 million compared to 4Q21. This was due to an improvement in the spread and an increase in the portfolio of contracts closed in recent quarters, which generated R\$ 41.2 million mark-to-market than in 4Q21.

5.3. Added value services

Energisa Soluções is the Group company engaged in providing added value services to medium and high voltage customers across Brazil. These services generate benefits for our customers through improvements and streamlining of energy processes, thereby reducing costs and improving their operational levels. This business line includes services such as O&M (operation and maintenance of electric assets), Energy Efficiency and Automation of our customers' energy processes.

Energisa Soluções's main economic and financial figures have been summarized below:

Energisa Soluções Consolidated Amounts in R\$ million	Quarter			Year		
	4Q22	4Q21	Change %	2022	2021	Change %
Net revenue	121.0	71.8	+ 68.5	411.6	230.0	+ 78.9
PMSO	(113.5)	(90.1)	+ 25.9	(376.2)	(229.7)	+ 63.7
(-) Costs and expenses ¹	(1.5)	(6.6)	- 78.0	1.1	(4.9)	-
EBITDA	6.0	(25.0)	-	36.5	(4.6)	-
Net income (loss) for the period	0.6	(19.3)	-	11.8	(13.0)	-

(1) Includes amortization and depreciation.

This year' revenue results have grown strongly compared with the previous year due to securing new contracts in Solar O&M, Transmission O&M, Third-Party Works Management and electric asset automation.

Costs and expenses amounted to R\$ 113.5 million in 4Q22, an increase of 17.4% compared to 4Q21, lower relative growth compared to the revenue growth due to recognizing expenses in 3 contracts in the Management and Construction portfolio.

EBITDA totaled R\$ 6.0 million in 4Q22, an increase of R\$ 31.0 million compared to the same period last year, and net income was R\$ 0.6 million in 4Q22, R\$ 19.9 million more than 4Q21.

6. Centralized generation

The photovoltaic plants Energisa Geração Central Solar Rio do Peixe I and Energisa Geração Central Solar Rio do Peixe II, located in Paraíba state, came into operation on September 02, 2022, with an installed capacity of 70 MWp. R\$ 307 million was invested in generating some 600 jobs in the region during the implementation period.

The ventures have global clean energy certificates (I-REC), which add value to the Megawatt generated and confirms the energy comes from renewable sources. Building these plants is a part of Energisa Group's strategy to diversify its portfolio. The company is already engaged in decentralized solar generation and its first centralized solar generation venture is now in commercial operation. The energy generated from the farm was marketed by the Group in the free sector.

In addition to providing greater energy reliability to the region and reducing electricity losses for clients, the two plants will avoid the emission of some 15,000 tons of CO₂ a year into the atmosphere. One of Energisa Group's Commitments, with targets through 2050, is to enable the addition of renewable sources in Brazil sustainably, with energy security, and matrix reliability.

See below a summary of the economic and financial performance of the Rio do Peixe 1 and 2 plants:

Centralized Generation Amounts in R\$ million	Quarter			Year		
	4Q22	4Q21	Change %	2022	2021	Change %
Net revenue	2.3	-	-	2.3	-	-
EBITDA	1.3	-	-	1.3	-	-
Net income (loss) for the period	(4.1)	-	-	(4.1)	-	-

(1) Includes amortization and depreciation.

7. Following up on the Company's projections

Comment on the Performance of Individual and Consolidated Corporate Projections

Pursuant to article 21 (4) of CVM Resolution n. 80/22, see below the comparisons of the projections disclosed by the Company with the actual performance data until the end of FY 2022:

- (i) Projections of the commitments related to the sustainability of the business, addressing environmental, social and governance ("ESG") matters the Company disclosed to the market on June 29, 2022:

Topic	Operation	Projection through the period ended December 31, 2026	Accumulated through December 31, 2022
Clean and affordable electricity for remote concession areas	no. of consumer units	55,000	26,776
Decommissioning and deactivating thermal power plants	MW	171.7	125.7
Installing renewable energy capacity	GW	1.7	0.261

- (ii) Greater participation of other business lines in Consolidated EBITDA, disclosed to the market on November 21, 2022:

Topic	Operation	Projection through the period ended December 31, 2026	Position at December 31, 2022
Participation of other Company business lines in addition to electricity distribution in Consolidated EBITDA	% of Consolidated EBITDA	By 25	15.3

- (iii) Estimated investment disclosed to the market on December 19, 2022:

Topic	Operation	Projection through the period ended December 31, 2026	Accumulated as of December 31, 2022
Estimate investment	R\$ billion	29.5	6.5

8. Subsequent events

8.1 Capital increase in subsidiaries

The capital increase of the subsidiary Energisa Participações Minoritárias S/A approved on February 10, 2023 through the issue of 55,915,722 new registered, book-entry preferred shares with no par value, for the issue price of R\$ 24,68 per share, totaling R\$ 1,380,000, fixed without unjustified dilution of the current shareholders, based on the perspective of future profitability of the subsidiary EPM, pursuant to article 170, paragraph 1, item I, of the Brazilian Corporate Law, as per Appraisal Report prepared by the Appraisal Company, duly approved unanimously by the shareholders present at the Meeting filed at the headquarters of the subsidiary EPM, paid in cash by the shareholder Itaú Unibanco S.A., in national currency, being that, of the total issue price, the amount of R\$ 690,000, corresponding to R\$ 12.34 for each new preferred share, will be allocated to the formation of the subsidiary's share capital, with the share capital of the subsidiary EPM changing from R\$ 5,209,168 for R\$ 5,899,168 and the surplus, in the total amount of R\$ 690,000, corresponding to R\$ 12.34 for each new preferred share, will be allocated to the formation of the capital reserve account, pursuant to article 182, §1, item "a", of the Brazilian Corporate Law.

8.2 Rate tiers

ANEEL decided to trigger the Green Tier for DisCo subsidiaries in January to March 2023, after analyzing the

hydrological situation in Brazil.

8.3 Post-employment benefits

Migration - Healthcare plan

On January 03, 2023, the subsidiaries EMR and ESOL signed a contract with UNIMED NACIONAL for the migration of all beneficiaries from the Self-management plan to UNIMED NACIONAL.

Withdrawal of sponsorship from pension plans

On January 31, 2023, the DisCo subsidiaries ETO, EMT, EMS, ESS and EPB requested that Fundação Energisa de Previdência - EnergisaPrev withdraw sponsorship from the benefit plans, Elétricas DB, Elétrica OP, Plano R, Plano I, Plano II, and Plano Funasa CD. This is due to the minimal number of participants remaining in these plans after the waves of migration in 2022, making them inviable in terms of administrative costs.

8.4 Energisa joins the B3 Carbon Efficient Index

On January 04, 2023, the Company was selected to join the Carbon Efficient Index (ICO2 B3). The new portfolio will be effective from 01/02/2023 to 04/30/2023, and will be rebalanced every four months, based on updates from IBrX 100. The ICO2 is composed of shares of companies participating in IBrX 100, who agree to adopt transparent practices regarding their greenhouse gas emissions (GHG), affirming their concern about global warming. This achievement reinforces Energisa's commitment to sustainable growth, reflected in the adoption of best practices in environmental, social and corporate governance issues.

8.5 Loans contracted - Subsidiaries EMR, EMT, ESE, EBO and ALSOL

On January 26 the direct subsidiary Energisa Minas Rio Distribuidora de Energia S.A. secured from financial institution the amount of R\$ 105,000 corresponding to USD 20,095 dollars, incurring interest of 5.31% per year and maturing on January 27, 2025. Swap equivalent to CDI + 1.40% p.a. was procured, thereby eliminating the operation's currency risk.

On January 30, 2023 the indirect subsidiary Energisa Mato Grosso Distribuidora de Energia S.A. secured from financial institution the amount of R\$ 300,000, corresponding to USD 58,823, incurring SOFR + 0.80% per year, maturing on January 30, 2026. Swap equivalent to CDI + 1.50% p.a. was procured, thereby eliminating the operation's currency risk.

On January 30, 2023 the direct subsidiary Energisa Sergipe Distribuidora de Energia S/A. secured from financial institution the amount of R\$ 250,000, corresponding to USD 58,823, incurring interest of SOFR+ 0.80% per year, maturing on September 30, 2025. Swap equivalent to CDI + 1.40% p.a. was procured, thereby eliminating the operation's currency risk.

On February 13, 2023 the direct subsidiary Alsol Energias Renováveis S/A secured from the National Bank for Economic and Social Development - BNDES the first disbursement of R\$ 350 million, of which R\$ 310 million incurring IPCA + 5.23% per year and R\$ 40 million incurring 2.52% per year, maturing on January 15, 2039. This resource is part of a financing with a total amount of R\$ 700 million contracted on December 28, 2022.

On March 09, 2023 the indirect subsidiary Energisa Mato Grosso Distribuidora de Energia S/A. secured from Scotiabank Brasil S/A Banco Múltiplo the amount of R\$ 230,000, corresponding to USD 44,264, incurring 5.365% per year, maturing on March 09, 2026. Swap equivalent to CDI + 1.57% p.a. was procured, thereby eliminating the operation's currency risk.

On March 09, 2023 the direct subsidiary Energisa Borborema Distribuidora de Energia S/A. secured from Scotiabank Brasil S/A Banco Múltiplo the amount of R\$ 20,000, corresponding to USD 3,849, incurring interest of 5.365% per year, maturing on March 09, 2026. Swap equivalent to CDI + 1.57% p.a. was procured, thereby eliminating the operation's currency risk.

8.6 Debentures issuance - Subsidiaries EMS, ETO and ESS

On February 15, 2023, the indirect subsidiary Energisa Mato Grosso do Sul Distribuidora de Energia S/A made its 18th local-currency debentures issuance in the amount of R\$ 200,000 in a single series maturing on February 15, 2025 and yielding CDI plus 1.40% p.a.; the funds were placed in a current account on March 06, 2023 and were used in the ordinary management of the subsidiary's operations.

On February 15, 2023, the indirect subsidiary Energisa Tocantins Distribuidora de Energia S/A made its 9th local-currency debentures issuance in the amount of R\$ 200,000 in a single series maturing on February 15, 2025 and yielding CDI plus 1.40% p.a.; the funds were placed in a current account on March 06, 2023, and were used in the ordinary management of the subsidiary's operations.

On February 15, 2023, the indirect subsidiary Energisa Sul Sudeste Distribuidora de Energia S/A made its 9th local-currency debentures issuance in the amount of R\$ 150,000 in a single series maturing on February 15, 2026 and yielding CDI plus 1.50% p.a.; the funds were placed in a current account on March 06, 2023, and were used in the ordinary management of the subsidiary's operations.

8.7 STF decision on "res judicata" in tax matters

On February 8, 2023, the Federal Supreme Court ("STF") concluded the judgment of Items 881 and 885, deciding on the loss of effects of individual decisions that became final when, in constitutionality control, there is a change in the understanding of the court in the judgment of tax matters. Evaluating the final and unappealable court decisions, the Company and its subsidiaries did not identify cases in which there was a change in understanding by the Federal Supreme Court, for the base date of December 31, 2022.

8.8 Capital increase at subsidiaries

On February 10, 2023, the EGM approved the capital increase of the subsidiary Energisa Participações Minoritárias S/A through the issuance of 55,915,722 new registered preferred shares, book-entry and with no par value, at the issuance price of R\$ 24.68 per share, totaling R\$ 1,380,000, set without the unjustified dilution of the current shareholders, based on the expected future profitability of the subsidiary EPM, pursuant to article 170 (1,I) of Brazilian corporation law, as per the Valuation Report prepared by the Appraisers, unanimously approved by the shareholders attending the meeting and filed at the EPM subsidiary's headquarters, paid in full in Brazilian currency by the shareholder Itaú Unibanco S.A., with the total issuance price of R\$ 690,000, corresponding to R\$ 12.34 for each new preferred share, to be allocated to the formation of the subsidiary's share capital, increasing the subsidiary EPM's share capital from R\$ 5,209,168 to R\$ 5,899,168, and the surplus of R\$ 690,000, corresponding to R\$ 12.34 for each new preferred share, to be allocated to the formation of the capital reserve account, as per article 182 (1,"a") of Brazilian Corporation Law.

8.9 Projected investment

On January 31, 2023 Energisa S.A. issued a Press Release about the Group's planned investments for 2023, updated in item 10.8 of its Reference Form. The total estimated investment announced was R\$ 6.0 billion, as shown below:

Projections 2023 (R\$ million)	Electric Assets	Non-electric Assets	Total Proprietary Assets	Special Obligations*	Total
EMR	196.6	21.9	218.5	40.1	258.6
ESE	191.7	20.9	212.6	17.1	229.7
EBO	31.6	4.9	36.5	4.0	40.5
EPB	319.5	39.0	358.6	33.7	392.2
EMT	700.5	79.7	780.2	133.1	913.3
EMS	493.5	43.0	536.5	81.3	617.8
ETO	407.6	30.8	438.4	38.3	476.7
ESS	215.3	21.9	237.1	58.4	295.6
ERO	371.2	25.5	396.7	175.9	572.6
EAC	284.9	16.6	301.5	274.9	576.4
Total DisCos	3,212.4	304.2	3,516.6	856.8	4,373.4
Goiás	0.7	-	0.7	-	0.7
Pará I	0.5	-	0.5	-	0.5
Pará II	14.0	-	14.0	-	14.0
Tocantins I	45.7	-	45.7	-	45.7
Tocantins II	18.8	-	18.8	-	18.8

Amazonas	220.1	-	220.1	-	220.1
Amazonas II	22.8	-	22.8	-	22.8
Macapá TL	21.9	-	21.9	-	21.9
Amapá	46.1	-	46.1	-	46.1
Paranaíba	0.0	-	0.0	-	0.0
Taubaté TL	7.0	-	7.0	-	7.0
Xingu TL	43.2	-	43.2	-	43.2
Total Transmission	440.8	-	440.8	-	440.8
Alsol	1,126.0	-	1,126.0	-	1,126.0
Energisa Soluções	-	27.3	27.3	-	27.3
(re) energisa	1,126.0	27.3	1,153.3	-	1,153.3
Voltz	-	6.9	6.9	-	6.9
Holding Company	-	53.1	53.1	-	53.1
Other	-	2.7	2.7	-	2.7
Total	4,779.2	394.2	5,173.4	856.8	6,030.2

8.10 Payments of dividends for FY 2022 - subsidiaries

The subsidiaries' management approved the distribution of interim dividends on March 15 and 16, 2023 from the profit account for FY 2022, as demonstrated below:

Subsidiaries	Dividend amounts (R\$ Million)	Amount per share (R\$)	Date of payment
Energisa Mato Grosso	366.7	1.6748165765079700	03/29/2023
Energisa Mato Grosso do Sul	194.4	300.52816756704700	03/29/2023
Energisa Paraíba	83.3	90.691094634921900	03/29/2023
Energisa Tocantins	50.7	77.855018392763200	03/29/2023
Energisa Sergipe	50.1	256.07046340577900	03/29/2023
Energisa Sul-Sudeste	13.1	134.80519266412100	03/29/2023
Energisa Borborema	13.1	44.6283904082700	03/29/2023
Energisa Minas Rio	7.7	7.2772018394983800	03/29/2023

Management.

Appendix I - Supplementary information

A.1 Net operating revenue - Consolidated

Operating revenue by segment Description (R\$ million)	Quarter			Year		
	4Q22	4Q21 (re-stated)	Change %	2022	2021 (re-stated)	Change %
(+) Electricity revenue (captive market)	5,994.5	7,120.3	- 15.8	24,600.0	24,507.4	+ 0.4
✓ Residential	3,055.9	3,568.9	- 14.4	12,383.3	12,336.4	+ 0.4
✓ Industrial	377.9	457.2	- 17.3	1,596.6	1,624.6	- 1.7
✓ Commercial	1,178.2	1,475.6	- 20.2	5,001.1	5,022.4	- 0.4
✓ Rural	645.0	755.1	- 14.6	2,643.7	2,650.2	- 0.2
✓ Other sectors	737.5	863.7	- 14.6	2,975.3	2,873.7	+ 3.5
(+) Electricity sales to distributors	95.1	248.8	- 61.8	367.9	1,291.8	- 71.5
(+) Net unbilled sales	(73.4)	(179.8)	- 59.2	51.5	320.1	- 83.9
(+) Sales by trading company (ECOM)	246.1	287.5	- 14.4	907.4	984.1	- 7.8
(+) Electricity network usage charges (TUSD)	609.5	536.0	+ 13.7	2,317.1	1,975.8	+ 17.3
(+) Infrastructure construction revenue	1,302.5	576.9	+ 125.8	5,407.3	3,105.5	+ 74.1
(+) Creation and amortization of financial sector assets and liabilities	252.8	800.0	- 68.4	883.9	2,559.7	- 65.5
(+) Subsidies for services awarded under concession	395.9	350.2	+ 13.0	1,520.6	1,396.5	+ 8.9
(+) Restatement of the concession financial asset (VNR)	149.5	240.4	- 37.8	469.8	686.3	- 31.5
(+) Other revenue	121.3	80.8	+ 50.2	437.5	307.2	+ 42.4
(=) Gross Revenue	9,093.8	10,061.3	- 9.6	36,963.0	37,134.4	- 0.5
(-) Sales taxes	1,700.2	2,432.9	- 30.1	7,514.7	8,728.1	- 13.9
(-) Rate tier deductions	-	12.4	-	-	(17.0)	-
(-) Sector charges	731.9	503.6	+ 45.3	2,945.2	1,947.8	+ 51.2
(=) Net revenue	6,661.7	7,112.3	- 6.3	26,503.1	26,475.5	+ 0.1
(-) Infrastructure construction revenue	1,302.5	576.9	+ 125.8	5,407.3	3,105.5	+ 74.1
(=) Net revenue, without infrastructure construction revenue	5,359.2	6,535.4	- 18.0	21,095.8	23,370.0	- 9.7

A.2 EBITDA by company

Description Amounts in R\$ million	Quarter			Year		
	4Q22	4Q21	Change %	2022	2021	Change %
Electricity distribution	1,319.2	1,208.1	+ 9.2	5,865.1	5,432.3	+ 8.0
EMR	39.0	22.9	+ 70.0	172.1	155.8	+ 10.5
ENF ⁽¹⁾	2.5	9.0	- 71.9	27.7	33.3	- 16.9
ESE	123.2	136.9	- 10.0	477.5	470.3	+ 1.5
EBO	23.7	29.3	- 19.2	79.3	83.0	- 4.4
EPB	161.4	168.4	- 4.1	581.3	665.6	- 12.7
EMT	448.5	302.8	+ 48.1	2,120.5	1,775.0	+ 19.5
EMS	278.5	298.4	- 6.6	1,185.1	1,052.9	+ 12.6
ETO	110.1	55.6	+ 98.2	499.5	398.9	+ 25.2
ESS	81.2	71.5	+ 13.6	322.8	314.0	+ 2.8
ERO	84.8	16.0	+ 430.4	279.8	252.4	+ 10.8
EAC	(33.7)	97.4	-	119.4	231.0	- 48.3
Electricity transmission	195.9	87.5	+ 123.9	978.1	352.8	+ 177.3
EGO	11.5	12.0	- 4.2	78.4	48.4	+ 62.1
EPA I	11.4	13.2	- 13.6	99.0	49.8	+ 98.7
EPA II	13.2	15.1	-	35.9	66.8	- 46.2
ETT	(41.0)	34.8	-	81.9	165.1	- 50.4
EAM	(40.9)	11.9	-	112.2	20.0	+ 461.3
ETT II	0.5	0.6	- 24.8	0.7	0.6	+ 6.6
EPT	8.4	-	-	16.4	-	-
EAP	0.5	(0.0)	-	2.0	(0.0)	-
Gemini	233.6	-	-	554.3	-	-
ETE parent company	(1.2)	(0.1)	+ 903.4	(2.7)	2.0	-
(re) energisa	23.4	(44.3)	-	106.3	(9.0)	-
Alsol consolidated (Distributed generation)	(1.4)	6.6	-	26.4	21.9	+ 20.7
ECOM (Electricity marketing)	18.7	(25.9)	-	43.5	(26.2)	-
ESOL consolidated (Services)	6.0	(25.0)	-	36.5	(4.6)	-
Holding companies and other	(19.0)	(25.9)	- 26.6	18.2	(0.5)	-
ESA parent company	(4.8)	(21.6)	- 77.6	38.9	5.2	+ 651.6
Other	(14.2)	(4.3)	+ 227.4	(20.7)	(5.7)	+ 266.8
Business combination	34.3	198.4	- 82.7	28.5	94.0	- 69.7
EBITDA	1,553.8	1,423.7	+ 9.1	6,996.2	5,869.6	+ 19.2
Fine revenue	94.7	109.8	- 13.8	409.6	454.8	- 9.9
Adjusted EBITDA covenants	1,648.4	1,533.5	+ 7.5	7,405.8	6,324.3	+ 17.1
EBITDA Margin (%)	23.3	20.0	+ 16.5 p.p.	26.4	22.2	+ 19.1 p.p.
Adjusted EBITDA margin covenants (%)	24.7	21.6	+ 14.8 p.p.	27.9	23.9	+ 17.0 p.p.

(1) Due to the merger of ENF into EMG in November/2022, ENF's information covered an 11-month period when analyzing FY 2022 and 1 month when analyzing 4Q22.

A.3 Profit (loss) per company

Description Amounts in R\$ million	Quarter			Year		
	4Q22	4Q21 (restated) ²	Change %	2022	2021 (restated) ²	Change %
Electricity distribution	587.1	570.6	+ 2.9	2,581.4	2,862.6	- 9.8
EMR	8.1	(2.4)	-	52.3	57.8	- 9.4
ENF ⁽¹⁾	(0.3)	2.4	-	8.3	11.4	- 27.7
ESE	73.1	75.2	- 2.8	269.6	296.4	- 9.0
EBO	17.0	23.2	- 26.7	56.0	61.3	- 8.8
EPB	108.2	97.4	+ 11.1	355.0	444.2	- 20.1
EMT	227.3	130.3	+ 74.5	1,190.7	1,015.5	+ 17.2
EMS	122.9	133.1	- 7.7	556.8	560.8	- 0.7
ETO	64.3	(1.8)	-	267.9	220.1	+ 21.7
ESS	29.7	27.1	+ 9.4	130.5	142.5	- 8.4
ERO	(64.3)	(160.9)	- 60.0	(350.0)	(239.2)	+ 46.3
EAC	1.1	247.1	- 99.6	44.3	291.7	- 84.8
Electricity transmission	29.4	27.1	+ 8.3	361.0	181.2	+ 99.2
EGO	7.4	8.9	- 17.0	62.9	39.3	+ 60.0
EPA I	8.6	1.0	+ 744.3	73.4	19.7	+ 273.1
EPA II	6.1	9.9	-	(3.7)	56.3	-
ETT	(26.8)	21.3	-	54.3	106.5	- 49.0
EAM	(43.1)	10.4	-	99.0	17.6	+ 462.2
ETT II	0.3	0.5	- 45.6	0.5	0.5	- 14.1
EPT	8.3	-	-	16.0	-	-
EAP	0.4	(0.0)	-	1.7	(0.0)	-
Gemini	129.2	-	-	245.2	-	-
ETE parent company	(60.9)	(25.0)	+ 144.0	(188.2)	(58.7)	+ 220.8
(re) energisa	(2.5)	(39.2)	- 93.6	15.1	(31.4)	-
Alsol consolidated (Distributed generation)	(12.9)	(1.6)	+ 724.8	(13.0)	3.0	-
ECOM (Electricity marketing)	9.8	(18.3)	-	16.3	(21.5)	-
ESOL consolidated (Services)	0.6	(19.3)	-	11.8	(13.0)	-
Holding companies and other	(203.1)	(249.6)	- 18.7	(349.3)	51.2	-
ESA parent company	(169.0)	(237.1)	- 28.7	(302.3)	98.3	-
Other	(34.1)	(12.5)	+ 171.7	(46.9)	(47.1)	- 0.3
Business combination	(28.0)	19.7	-	(180.2)	(248.8)	- 27.6
Net income	382.9	328.6	+ 16.5	2,428.0	2,814.8	- 13.7

(1) Due to the merger of ENF into EMG in November/2022, ENF's information covered an 11-month period when analyzing FY 2022 and 1 month when analyzing 4Q22. | (2) The following companies restated their 4Q21 and 2021 figures: ESA, EMR, EMT, EMS, ETO, ESS, ERO and EAC,

A.4 Mirror debentures

Private debentures of the DisCos with the Parent company Energisa S.A.	Date Funds Raised	Issuance value (R\$ million)	Debt Balance in Dec/22	Maturity Date	Index	Spread (p.a.)
ESA 16th Issuance - CVM 476: ⁽⁴⁾	05/10/2022	500.0	512.5	Series 1: 04/15/2029 Series 2: 04/15/2032	IPCA	Series 1: IPCA + 6.16% Series 2: IPCA + 6.28%
✓ ERO 7 th issuance	05/10/2022	410.0	420.25	Series 1: 04/15/2029 Series 2: 04/15/2032	IPCA	Series 1 IPCA + 6.16% Series 2 IPCA + 6.28%
✓ ETO 8 th Issuance	05/10/2022	90.0	92.25	Series 1: 04/15/2029 Series 2: 04/15/2032	IPCA	Series 1 IPCA + 6.16% Series 2 IPCA + 6.28%
ESA 15th Issuance - CVM 476: ⁽¹⁾	10/29/2021	330.0	360.1	10/15/2031	IPCA	IPCA + 6.09%
✓ EPB 10 th Issuance	10/29/2021	54.6	59.6	10/15/2031	IPCA	IPCA + 6.09%
✓ ETO 7 th Issuance	10/29/2021	82.0	89.5	10/15/2031	IPCA	IPCA + 6.09%
✓ ESE 10 th Issuance	10/29/2021	59.0	64.3	10/15/2031	IPCA	IPCA + 6.09%
✓ ERO 6 th issuance	10/29/2021	92.8	101.3	10/15/2031	IPCA	IPCA + 6.09%
✓ EAM 1 st Issuance	10/29/2021	41.6	45.4	10/15/2031	IPCA	IPCA + 6.09%
ESA 14th Issuance - CVM 476: ⁽¹⁾	10/27/2020	480.0	577.3	Series 1: 10/15/2027 Series 2: 10/15/2030	IPCA	Series 1: IPCA + 4.23% Series 2: IPCA + 4.475%
✓ EMS 15 th Issuance	10/27/2020	75.0	90.2	Series 1: 10/15/2027 Series 2: 10/15/2030	IPCA	Series 1: IPCA + 4.23% Series 2: IPCA + 4.475%
✓ EMG 13 th Issuance	10/27/2020	35.0	42.1	Series 1: 10/15/2027 Series 2: 10/15/2030	IPCA	Series 1: IPCA + 4.23% Series 2: IPCA + 4.475%
✓ ENF 2 nd Issuance	10/27/2020	10.0	12.0	Series 1: 10/15/2027 Series 2: 10/15/2030	IPCA	Series 1: IPCA + 4.23% Series 2: IPCA + 4.475%
✓ ETO 6 th Issuance	10/27/2020	60.0	72.2	Series 1: 10/15/2027 Series 2: 10/15/2030	IPCA	Series 1: IPCA + 4.23% Series 2: IPCA + 4.475%
✓ ERO 3 rd issuance	10/27/2020	85.0	102.2	Series 1: 10/15/2027 Series 2: 10/15/2030	IPCA	Series 1: IPCA + 4.23% Series 2: IPCA + 4.475%
✓ EAC 2 nd Issuance	10/27/2020	40.0	48.1	Series 1: 10/15/2027 Series 2: 10/15/2030	IPCA	Series 1: IPCA + 4.23% Series 2: IPCA + 4.475%
✓ EPB 9 th Issuance	10/27/2020	70.0	84.2	Series 1: 10/15/2027 Series 2: 10/15/2030	IPCA	Series 1: IPCA + 4.23% Series 2: IPCA + 4.475%
✓ ESE 9 th Issuance	10/27/2020	30.0	36.0	Series 1: 10/15/2027 Series 2: 10/15/2030	IPCA	Series 1: IPCA + 4.23% Series 2: IPCA + 4.475%
✓ ESS 6 th Issuance	10/27/2020	60.0	72.2	Series 1: 10/15/2027 Series 2: 10/15/2030	IPCA	Series 1: IPCA + 4.23% Series 2: IPCA + 4.475%
✓ EBO 5 th Issuance	10/27/2020	15.0	18.0	Series 1: 10/15/2027 Series 2: 10/15/2030	IPCA	Series 1: IPCA + 4.23% Series 2: IPCA + 4.475%
ESA 11th Issuance - CVM 476: ⁽¹⁾	05/03/2019	500.0	640.5	04/15/2026	IPCA	4.62%
✓ EAC 1 st Issuance	05/06/2019	175.0	224.2	04/14/2026	IPCA	4.62%
✓ ERO 2 nd issuance	05/06/2019	325.0	416.3	04/14/2026	IPCA	4.62%
ESA 8th Issuance - CVM 400: ⁽²⁾	07/19/2017	374.9	243.8	Series 2 - 6/15/2024	IPCA	Series 2 - 5.6601% p.a.
✓ EMT 6 th Issuance	07/19/2017	155.4	101.0	Series 2 - 6/15/2024	IPCA	Series 2 - 5.6601% p.a.
✓ ETO 2 nd Issuance	07/19/2017	75.5	49.1	Series 2 - 6/15/2024	IPCA	Series 2 - 5.6601% p.a.
✓ ESS 1 st Issuance	07/19/2017	46.8	30.4	Series 2 - 6/15/2024	IPCA	Series 2 - 5.6601% p.a.
✓ ESS 1 st Issuance	07/19/2017	34.9	22.7	Series 2 - 6/15/2024	IPCA	Series 2 - 5.6601% p.a.
✓ EPB 2 nd Issuance	07/19/2017	28.8	18.7	Series 2 - 6/15/2024	IPCA	Series 2 - 5.6601% p.a.
✓ ESE 4 th Issuance	07/19/2017	17.7	11.5	Series 2 - 6/15/2024	IPCA	Series 2 - 5.6601% p.a.
✓ EMG 8 th Issuance	07/19/2017	15.9	10.4	Series 2 - 6/15/2024	IPCA	Series 2 - 5.6601% p.a.
ESA 9th Issuance - CVM 400: ⁽³⁾	10/31/2017	850.0	44.1	Series 2 - 10/15/2024 Series 3 - 10/15/2027	IPCA and CDI	Series 2 - IPCA + 4.7110% Series 3 - IPCA+5.1074%
✓ EMG 9 th Issuance	10/31/2017	50.0	2.6	Series 2 - 10/15/2024 Series 3 - 10/15/2027	IPCA and CDI	Series 2 - IPCA + 4.7110% Series 3 - IPCA+5.1074%
	10/31/2017	145.0	7.2			

Private debentures of the DisCos with the Parent company Energisa S.A.	Date Funds Raised	Issuance value (R\$ million)	Debt Balance in Dec/22	Maturity Date	Index	Spread (p.a.)
✓ EMT 7 th Issuance				Series 2 - 10/15/2024 Series 3 - 10/15/2027	IPCA and CDI	Series 2 - IPCA + 4.7110% Series 3 - IPCA+5.1074%
✓ EMS 9 th Issuance	10/31/2017	148.0	7.5	Series 2 - 10/15/2024 Series 3 - 10/15/2027	IPCA and CDI	Series 2 - IPCA + 4.7110% Series 3 - IPCA+5.1074%
✓ ESS 3 rd Issuance	10/31/2017	118.0	7.7	Series 2 - 10/15/2024 Series 3 - 10/15/2027	IPCA and CDI	Series 2 - IPCA + 4.7110% Series 3 - IPCA+5.1074%
✓ ESE 5 th Issuance	10/31/2017	98.0	6.1	Series 2 - 10/15/2024 Series 3 - 10/15/2027	IPCA and CDI	Series 2 - IPCA + 4.7110% Series 3 - IPCA+5.1074%
✓ ETO 3 rd Issuance	10/31/2017	131.0	6.8	Series 2 - 10/15/2024 Series 3 - 10/15/2027	IPCA and CDI	Series 2 - IPCA + 4.7110% Series 3 - IPCA+5.1074%
✓ EPB 3 rd Issuance	10/31/2017	160.0	8.2	Series 2 - 10/15/2024 Series 3 - 10/15/2027	IPCA and CDI	Series 2 - IPCA + 4.7110% Series 3 - IPCA+5.1074%
Total	2017-2022	3,034.9	2,378.2			

A.5 Investment by company

Investment Amounts in R\$ million	Electric Assets			Special Obligations			Non-electric assets			Total Investment		
	4Q22	4Q21	Change %	4Q22	4Q21	Change %	4Q22	4Q21	Change %	4Q22	4Q21	Change %
EMG	36.7	16.5	+ 122.8	1.3	4.5	- 70.9	4.0	1.3	+ 206.6	42.1	22.3	+ 88.8
ENF	2.8	2.7	+ 3.8	(0.1)	0.0	-	0.6	0.3	+ 108.2	3.2	3.0	+ 8.7
EMR (*)	39.5	19.2	+ 106.1	1.2	4.5	- 73.7	4.6	1.6	+ 190.0	45.3	25.2	+ 79.4
ESE	30.1	54.2	- 44.5	3.4	1.4	+ 141.3	3.5	1.7	+ 99.0	37.0	57.4	- 35.6
EBO	4.0	4.5	- 12.3	1.9	0.2	+ 834.7	1.2	0.3	+ 232.7	7.0	5.1	+ 37.8
EPB	54.3	45.2	+ 20.0	5.3	2.1	+ 150.8	9.9	3.4	+ 193.7	69.5	50.7	+ 37.0
EMT	156.7	165.8	- 5.5	140.7	5.9	+ 2,286.8	13.0	4.6	+ 180.7	310.3	176.4	+ 76.0
EMS	112.1	150.7	- 25.6	16.3	9.0	+ 81.4	6.5	1.7	+ 280.7	135.0	161.4	- 16.4
ETO	81.8	72.9	+ 12.2	5.0	5.8	- 13.3	5.6	(0.6)	-	92.5	78.1	+ 18.4
ESS	40.2	37.7	+ 6.6	7.0	3.4	+ 105.1	5.2	(1.5)	-	52.4	39.6	+ 32.4
ERO	234.7	(238.5)	-	53.9	477.6	- 88.7	10.5	1.0	+ 982.6	299.1	240.0	+ 24.6
EAC	70.2	83.3	- 15.7	35.5	0.7	+ 4,726.6	3.3	1.5	+ 118.5	109.0	85.5	+ 27.4
Total DisCos	823.7	395.1	+ 108.5	270.2	510.7	- 47.1	63.1	13.7	+ 361.8	1,157.0	919.5	+ 25.8
EPA I	-	-	-	-	-	-	-	-	-	-	-	-
EPA II	9.2	28.3	- 67.6	-	-	-	0.0	0.0	+ 100.0	9.2	28.3	- 67.6
EGO I	-	-	-	-	-	-	-	-	-	-	-	-
ETT	65.4	88.5	- 26.1	-	-	-	1.1	-	-	66.4	88.5	- 24.9
ETT II	3.1	2.0	+ 53.5	-	-	-	-	-	-	3.1	2.0	+ 53.5
EAM	24.6	6.5	+ 278.6	(0.0)	-	-	0.2	0.0	+ 1,261.5	24.8	6.5	+ 281.3
EAP	2.8	-	-	-	-	-	-	-	-	2.8	-	-
GEMINI Consolidated	4.7	-	-	-	-	-	0.6	-	-	5.3	-	-
Total TransCos	109.7	125.3	- 12.4	-	(0.0)	-	1.8	0.0	+ 10,688.2	111.6	125.3	- 10.9
Alsol Consolidated	-	-	-	-	-	-	386.8	54.1	+ 614.6	386.8	54.1	+ 614.6
Total Distributed Generation	-	-	-	-	-	-	386.8	54.1	+ 614.6	386.8	54.1	+ 614.6
ECOM	-	-	-	-	-	-	0.1	0.1	- 21.9	0.1	0.1	- 21.9
ESOL	-	-	-	-	-	-	2.6	9.1	- 71.4	2.6	9.1	- 71.4
ESOL Construções	-	-	-	-	-	-	2.4	1.8	+ 34.0	2.4	1.8	+ 34.0
Total Services	-	-	-	-	-	-	5.0	10.9	- 53.8	5.0	10.9	- 53.8
RIO PEIXE I	-	16.0	-	-	-	-	13.0	-	-	13.0	16.0	- 18.6
RIO PEIXEII	-	14.9	-	-	-	-	3.9	-	-	3.9	14.9	- 74.0
ESA	-	-	-	-	-	-	13.2	17.6	- 24.7	13.2	17.6	- 24.7
Other companies	-	-	-	-	-	-	2.8	1.9	+ 43.8	2.8	1.9	+ 43.8
Total Holding companies and other companies	-	30.9	-	-	-	-	32.9	19.5	+ 68.8	32.9	50.4	- 34.7
Consolidated Total	933.4	551.3	+ 69.3	270.2	510.6	- 47.1	489.9	98.4	+ 398.0	1,693.5	1,160.3	+ 46.0

Investment Amounts in R\$ million	Electric Assets			Special Obligations			Non-electric assets			Total Investment		
	2022	2021	Change %	2022	2021	Change %	2022	2021	Change %	2022	2021	Change %
EMG	115.4	66.8	+ 72.7	5.4	8.5	- 36.3	12.4	2.8	+ 342.3	133.1	78.1	+ 70.4
ENF	20.3	9.1	+ 123.4	0.2	0.3	- 40.3	1.9	0.3	+ 487.6	22.4	9.7	+ 129.6
EMR (*)	135.6	75.9	+ 78.7	5.6	8.9	- 36.4	14.3	3.1	+ 357.3	155.5	87.9	+ 77.0
ESE	242.1	147.4	+ 64.2	10.0	6.1	+ 63.4	10.2	2.8	+ 267.6	262.3	156.3	+ 67.8
EBO	22.1	15.7	+ 40.6	2.9	1.7	+ 67.8	2.8	0.5	+ 529.3	27.8	17.9	+ 55.5
EPB	287.8	171.4	+ 67.9	16.8	13.6	+ 22.9	25.0	5.0	+ 398.5	329.6	190.1	+ 73.4
EMT	895.8	579.7	+ 54.5	188.0	4.3	+ 4,299.0	35.8	12.0	+ 199.1	1,119.6	595.9	+ 87.9
EMS	701.5	466.4	+ 50.4	106.4	43.8	+ 143.2	25.0	5.4	+ 363.9	832.9	515.5	+ 61.6
ETO	341.7	253.0	+ 35.1	36.6	30.1	+ 21.5	17.5	2.3	+ 664.7	395.9	285.4	+ 38.7
ESS	202.1	118.9	+ 69.9	29.2	22.1	+ 32.0	15.9	5.3	+ 203.7	247.3	146.3	+ 69.0
ERO	688.4	299.2	+ 130.1	160.6	523.7	- 69.3	26.4	14.8	+ 78.1	875.3	837.7	+ 4.5
EAC	381.2	237.0	+ 60.9	65.7	3.2	+ 1,976.2	9.6	6.2	+ 54.5	456.5	246.3	+ 85.3
Total DisCos	3,898.4	2,364.6	+ 64.9	621.8	657.5	- 5.4	182.5	57.3	+ 218.6	4,702.6	3,079.3	+ 52.7
EPA I	-	-	-	-	-	-	-	-	-	-	-	-
EPA II	52.4	186.8	- 71.9	-	-	-	0.1	0.3	- 58.5	52.5	187.1	- 71.9
EGO I	-	-	-	-	-	-	-	-	-	-	-	-
ETT	413.1	376.6	+ 9.7	-	-	-	1.6	0.0	164,400.0	414.7	376.6	+ 10.1
ETT II	5.5	2.0	+ 173.0	-	-	-	-	-	-	5.5	2.0	+ 173.0
EAM	80.7	256.0	- 68.5	-	-	-	0.6	1.3	- 58.4	81.2	257.3	- 68.4
EAP	8.2	-	-	-	-	-	-	-	-	8.2	-	-
GEMINI Consolidated	28.2	-	-	-	-	-	1.6	-	-	29.8	-	-
Total TransCos	588.1	821.3	- 28.4	-	-	-	3.9	1.6	+ 137.2	592.0	823.0	- 28.1
Alsol Consolidated	-	-	-	-	-	-	842.8	190.7	+ 342.0	842.8	190.7	+ 342.0
Total Distributed Generation	-	-	-	-	-	-	842.8	190.7	+ 342.0	842.8	190.7	+ 342.0
ECOM	-	-	-	-	-	-	0.3	0.2	+ 40.6	0.3	0.2	+ 40.6
ESOL	-	-	-	-	-	-	18.6	20.4	- 8.8	18.6	20.4	- 8.8
ESOL Construções	-	-	-	-	-	-	8.3	9.4	- 11.5	8.3	9.4	- 11.5
Total Services	-	-	-	-	-	-	26.9	29.8	- 9.7	26.9	29.8	- 9.7
RIO PEIXE I	-	16.0	-	-	-	-	176.3	-	-	176.3	16.0	+ 999.2
RIO PEIXEII	-	14.9	-	-	-	-	148.0	-	-	148.0	14.9	+ 891.3
Other companies	-	(5.1)	-	-	5.3	-	40.7	46.5	- 12.3	40.7	46.7	- 12.7
Total Holding companies and other companies	-	25.9	-	-	5.3	-	365.0	46.5	+ 685.5	365.0	77.6	+ 370.2
Consolidated Total	4,486.4	3,211.8	+ 39.7	621.8	662.8	- 6.2	1,421.5	326.1	+ 335.9	6,529.7	4,200.7	+ 55.4

(*) On 11/30/2022 the company ENF - Energisa Nova Friburgo was merged into the company EMG - Energisa Minas Gerais, which is now called EMR - Energisa Minas Rio. The 2021 and 2022 figures are based on the combined results of the two companies.

Appendix II - Financial Statements

1. Statement of financial position - assets

AT DECEMBER 31, 2022
(In thousands of Reais)

	Note	Parent company		Consolidated	
		2022	2021 (restated)	2022	2021 (restated)
Assets					
Current					
Cash and cash equivalents	6.1	42,312	17,408	916,207	773,505
Money market and secured funds	6.2	1,903,286	2,899,602	4,835,505	5,114,597
Clients, consumers, concession operators and other	7	70,857	32,681	3,952,081	4,366,634
Credit receivables		25	25	10,992	3,900
Inventory		264	270	145,421	134,558
Recoverable taxes	8	171,668	54,450	2,261,522	1,356,604
Dividends receivable		94,150	45,427	-	-
Derivative financial instruments	35	-	-	195,395	473,525
Sector financial assets	10	-	-	488,505	1,652,491
Public service concession- contract asset	14.2	-	-	659,865	151,135
Other accounts receivable	11	24,540	52,387	1,258,763	2,047,563
Total current		2,307,102	3,102,250	14,724,256	16,074,512
Noncurrent					
Long-term assets					
Money market and secured funds	6.2	2,334,202	1,766,358	196,587	128,754
Clients, consumers and concessionaires	7	-	-	1,662,512	1,461,924
Credit receivables		-	-	99,862	99,847
Sector financial assets	10	-	-	401,053	988,122
Related-party credits	12	2,297,546	2,432,573	-	-
Recoverable taxes	8	105,424	130,564	2,677,847	3,718,883
Tax credits	13	-	-	1,519,113	1,423,762
Escrows and secured bonds	25	3,637	1,177	1,306,768	1,003,852
Derivative financial instruments	35	269,998	495,848	1,251,990	2,025,932
Concession financial asset	14.1	-	-	9,789,619	7,618,313
Public service concession- contract asset	14.2	-	-	6,739,230	2,450,614
Other accounts receivable	11	199,965	200,000	539,236	589,856
		5,210,772	5,026,520	26,183,817	21,509,859
Contractual asset - Infrastructure under construction	18	-		1,671,954	1,247,877
Investment	16	11,070,645	9,503,617	49,247	64,755
Property, plant and equipment	17	79,813	70,698	1,875,170	717,518
Intangible assets	18	72,867	71,895	15,166,224	14,643,479
Total noncurrent		16,434,097	14,672,730	44,946,412	38,183,488
Total assets		18,741,199	17,774,980	59,670,668	54,258,000

See the accompanying notes to the financial statements.

2. Statement of financial position - liabilities

AT DECEMBER 31, 2022
(In thousands of Reais)

		Parent company		Consolidated	
	Note	2022	2021 (restated)	2022	2021 (restated)
Liabilities					
Current					
Trade payables	19	25,767	6,094	1,887,305	2,573,437
Debt charges	20	226,762	56,584	511,276	205,337
Loans and borrowings	20	317,164	66,833	3,533,985	2,014,714
Debentures	21	321,569	1,144,143	3,104,422	1,863,714
Taxes and social contributions	22	15,507	19,602	659,229	875,909
Tax financing	23	-	-	7,718	28,803
Sector charges	24	-	-	354,750	323,370
Incorporation of grids	26	-	-	359,021	349,863
Derivative financial instruments	35	26,448	1,235,453	667,068	1,709,426
Post-employment benefits	36	1,594	1,229	53,165	59,607
Dividends payable		242,028	798,743	275,503	808,562
Estimated obligations		17,223	14,233	144,862	134,479
Sector financial liabilities	10	-	-	958,313	803,480
Public lighting fee		-	-	114,808	112,188
Operating leases		41	86	10,006	12,934
Other liabilities	27	95,464	88,356	583,448	775,557
Total current		1,289,567	3,431,356	13,224,879	12,651,380
Noncurrent					
Trade payables	19	-	-	122,811	116,851
Loans and borrowings	20	1,297,396	1,643,093	10,162,071	9,539,154
Debentures	21	4,706,841	3,298,260	11,412,214	9,730,454
Sector financial liabilities	10	-	-	214,889	680,510
Deferred income and social contribution taxes	13	388,818	482,016	4,751,870	4,828,052
Provision for equity interest losses	16	-	412,545	-	-
Operating leases		308	326	55,473	39,613
Taxes and social contributions	22	4,855	4,087	1,620,071	859,499
Tax financing	23	-	-	9,123	15,554
Debts to related parties	12	-	426,139	-	-
Sector charges	24	-	-	97,059	129,878
Provision for labor, civil, tax and regulatory risks	25	2,609	5,405	1,970,886	1,870,119
Derivative financial instruments	35	1,693	1,371	19,901	372,796
Post-employment benefits	36	9,675	8,842	260,315	305,803
Effects of excluding ICMS from the PIS and Cofins calculation base	27	-	-	3,017,036	3,708,305
Other liabilities	27	19,544	24,389	248,317	324,472
Total noncurrent		6,431,739	6,306,473	33,962,036	32,521,060
Equity					
Share capital	28.1	4,946,375	3,363,685	4,946,375	3,363,685
Stock issuance cost	28.1 and 28.2	(65,723)	(65,723)	(65,723)	(65,723)
Capital reserve	28.2	1,037,141	263,834	1,037,141	263,834
Profit reserves	28.3 to 28.6	5,234,703	5,050,072	5,234,703	5,050,072
Retained earnings (accumulated losses)	28.7	-	(397,289)	-	(397,289)
Other comprehensive income	28.9	(132,604)	(177,428)	(132,604)	(177,428)
		11,019,893	8,037,151	11,019,893	8,037,151
Noncontrolling interests	28.10	-	-	1,463,860	1,048,409
Total equity		11,019,893	8,037,151	12,483,753	9,085,560
Total liabilities and equity		18,741,199	17,774,980	59,670,668	54,258,000

See the accompanying notes to the financial statements.

3. Statement of profit or loss

FINANCIAL YEAR ENDED DECEMBER 31, 2022
(In thousands of Reais, except for net income per share)

		Parent company		Consolidated	
	Note	2022	2021 (restated)	2022	2021 (restated)
Continued operations					
Net operating revenue	29	300,493	237,156	26,503,137	26,475,504
Cost of the electricity service	30	-	-	(11,782,898)	(14,969,934)
Costs of operations and services provided to third parties	30	(198,287)	(139,418)	(7,529,322)	(5,807,908)
Gross profit		102,206	97,738	7,190,917	5,697,662
General and administrative expenses	30	(83,266)	(110,339)	(1,369,335)	(887,410)
Other revenue	32	19,939	456	74,539	299,106
Other expenses	32	(637)	-	(174,363)	(482,774)
Share of profit (loss) of equity-accounted investees	16	2,419,873	2,493,239	-	-
Profit/loss before finance revenue (costs)		2,458,115	2,481,094	5,721,758	4,626,584
Finance revenue	33	707,793	506,860	1,613,404	1,430,243
Finance costs	33	(1,123,635)	(284,604)	(4,196,378)	(2,527,789)
Net finance costs		(415,842)	222,256	(2,582,974)	(1,097,546)
Profit/loss before tax on profit		2,042,273	2,703,350	3,138,784	3,529,038
Current income and social contribution taxes	13	-	-	(906,136)	(615,654)
Deferred income and social contribution taxes	13	93,188	(160,317)	195,372	(147,044)
Net income for the year from continued operations		2,135,461	2,543,033	2,428,020	2,766,340
Net income for the year from discontinued operations	39	-	48,467	-	48,467
Net income for the year	28.7	2,135,461	2,591,500	2,428,020	2,814,807
Profit attributable to:					
Shareholders of parent		2,135,461	2,591,500	2,135,461	2,591,500
Noncontrolling shareholders		-	-	292,559	223,307
Basic and diluted net income per common and preferred share - R\$		1.12	1.43	1.12	1.43
Basic and diluted net income per common and preferred share from continued operations - R\$		1.12	1.43	1.12	1.43

See the accompanying notes to the financial statements.

4. Comprehensive statement of income

	Note	Parent company		Consolidated	
		2022	2021 (restated)	2022	2021 (restated)
Net income for the year		2,135,461	2,591,500	2,428,020	2,814,807
Items that will not be reclassified to profit or loss					
Other comprehensive income	28.9	40,257	119,665	41,888	128,799
Items that might be reclassified to profit or loss					
Other comprehensive income		-	-	-	-
Total comprehensive income for the year, net of tax		2,175,718	2,711,165	2,469,908	2,943,606
Attributable to:					
Controlling shareholders		2,175,718	2,711,165	2,175,718	2,711,165
Noncontrolling shareholders		-	-	294,190	232,441

See the accompanying notes to the financial statements.

5. Statement of cash flows

FINANCIAL YEAR ENDED DECEMBER 31, 2022
'(In thousands of Reais)

		Parent company		Consolidated	
	Note	2022	2021 (restated)	2022	2021 Restated
Operating activities					
Net income for the year from continued operations	40	2,135,461	1,153,790	2,428,020	2,766,340
Net income for the year from discontinued operations		-	88,477	-	48,467
Current and deferred income and social contribution taxes	13	(93,188)	1,658	710,764	762,698
Expenses on interest and monetary and exchange variance - net		95,715	217,974	1,726,983	2,039,774
Reversal of the provision for credit losses and monetary restatement - discontinued operations		-	(88,477)	-	-
Adjustment to fair value of concession financial asset	14	-	-	(469,832)	(686,306)
Construction margin, operation and compensation of the Transmission contract asset	14.2	-	-	(450,004)	(222,712)
Depreciation and amortization	30	18,620	12,348	1,274,464	1,242,986
Allowance for doubtful accounts	30	-	-	320,832	245,917
Provision for labor, civil, tax and regulatory risks	30	1,754	497	(125,758)	(147,796)
(Gain) on the disposal of PP&E and intangible assets	32	(981)	(726)	117,826	95,184
Compensation of contract asset	14	-	-	(701,979)	(185,427)
Mark-to-market of traded energy purchase/sale contracts	32	-	-	(59,920)	(19,212)
Share of profit (loss) of equity-accounted investees	16	(2,419,873)	(1,327,790)	-	-
Mark-to-market of debt securities	33	(10,429)	(1,880)	(222,562)	(354,000)
Mark-to-market of derivatives	33	273,044	47,076	496,543	108,988
Derivative financial instruments	33	45,804	(110,872)	885,470	(510,190)
Variable compensation program - ILP		2,413	2,525	5,385	(510)
Changes in current and noncurrent assets					
Decrease (Increase) in consumers and concessionaires		(38,176)	15,037	215,295	(562,177)
(Increase) decrease in credit receivables		-	51	(2,606)	(107,812)
(Increase) decrease in inventories		6	(103)	(10,863)	(15,797)
(Increase) decrease in recoverable taxes		(92,078)	(11,836)	(161,701)	(197,568)
(Increase) in escrow and secured bonds		(2,460)	(320)	(231,374)	(187,715)
Decrease in sector financial assets	10	-	-	296,317	(2,453,698)
Funds from the Itaipu trading account		-	-	69,060	339,817
ANEEL Dispatch Receipts - COVID ACCOUNT		-	-	-	7,980
Decrease in other accounts receivable		28,863	27,062	652,934	(708,733)
Changes in current and noncurrent liabilities					
(Decrease) increase in suppliers payable		19,673	(4,819)	(750,123)	76,220
Increase in taxes and social contributions		(1,389)	1,910	938,813	503,778
Income and social contribution taxes paid		-	-	(630,901)	(601,216)
Payment recovery of ICMS credits - State REFIS		-	-	-	(370,478)
Increase in estimated obligations		2,990	2,571	10,383	15,905
Increase (decrease) in financial sector liabilities	10	-	-	191,627	(106,015)
Tax, civil, labor and regulatory proceedings paid		(4,565)	(3,575)	(267,148)	(201,422)
(Decrease) increase in other accounts payable		3,442	3,105	(570,145)	266,470
Net cash produced by operating activities		(35,354)	23,683	5,685,800	881,740
Investment activities					
Capital increase and acquisition of shares in subsidiaries and other investments		(1,376,453)	(7,666)	-	-
Goodwill paid in the acquisition of subsidiaries		-	(1,501)	-	-
Short-term investments and secured funds		895,032	(1,623)	1,101,593	550,796
Investments in PP&E, intangible assets and contractual asset - Infrastructure under construction	15.17 and 18	(31,432)	(34,482)	(4,893,023)	(2,619,244)
Applications to electricity transmission lines		-	-	(531,271)	(609,118)
Payments under business combination		-	-	(937,495)	-
Cash and cash equivalents paid under business combination		-	-	49,523	(239,300)
Sale of PP&E and intangible assets	15.17 and 18	49	20	116,556	123,244
Receipt of dividends and interest on equity		2,392,858	457,475	-	-
Net cash produced by (used in) investment activities		1,880,054	412,223	(5,094,117)	(2,793,622)
Financing activities					
New loans, financing and debentures	20 and 21	1,492,948	1,646,755	6,844,446	8,447,443
Loans and debentures payments - principal	20 and 21	(1,157,217)	(1,194,146)	(3,904,213)	(5,419,338)
Loans and borrowings payments - interest	20 and 21	(454,538)	(234,193)	(1,807,342)	(963,322)
Related parties		(1,145,604)	(553,778)	-	-
Payment of settled derivative financial instruments		(27,623)	67,357	(429,140)	509,621
Capital increase through share subscription		739,190	-	813,517	206,308
New tax financing		-	-	-	921
Payment of dividends		(1,266,756)	(217,431)	(1,581,828)	(893,564)
Payment of grid incorporation	26	-	-	(338,228)	(149,361)
Payment under Financial Lease		(196)	(264)	(17,479)	(19,824)
Payment of tax financing		-	-	(28,714)	(47,458)
Costs to acquire treasury shares		-	-	-	(48,141)
Net cash (used by) generated in financing activities		(1,819,796)	(485,700)	(448,981)	1,623,285
Net cash variation		24,904	(49,794)	142,702	(288,597)
Opening cash and cash equivalents	6	17,408	68,423	773,505	1,062,102
Closing cash and cash equivalents	6	42,312	18,629	916,207	773,505
Net cash variation		24,904	(49,794)	142,702	(288,597)

See the accompanying notes to the financial statements.

6. Statement of Added Value - DVA

FINANCIAL YEAR ENDED DECEMBER 31, 2022
'(In thousands of Reais)

	Note	Parent company		Consolidated	
		2022	2021 (restated)	2022	2021 (restated)
Generation of added value:					
Revenue					
Revenue from energy sales and services	29	339,599	268,133	32,702,430	34,484,711
Other revenue	32	19,939	456	74,539	299,106
Revenue relating to construction of company assets	29	-	-	4,367,832	2,736,607
Allowance for doubtful accounts	30	-	-	(371,565)	(245,917)
(-) Consumables acquired from third parties					
Cost of electricity sold		-	-	12,712,514	16,466,454
Materials and outsourced services		65,368	63,718	1,137,676	1,123,937
Other operating costs		7,526	7,317	4,633,646	2,910,292
		72,894	71,035	18,483,836	20,500,683
Gross value added		286,644	197,554	18,289,400	16,773,824
Depreciation, amortization and realization of goodwill	30	18,620	17,327	1,274,464	1,242,986
Net added value		268,024	180,227	17,014,936	15,530,838
Transferred value added					
Share of profit (loss) of equity-accounted investees	16	2,590,485	2,322,628	-	-
Financial revenue	33	742,353	532,422	1,720,888	1,526,157
Total added value to be distributed		3,600,862	3,035,277	18,735,824	17,056,995
Distribution of added value:					
Personnel					
Direct compensation		128,631	107,983	926,850	992,585
Benefits		23,158	20,002	355,941	292,093
FGTS		7,601	6,722	80,052	74,924
Taxes and contributions					
Federal		440	232,660	2,682,120	2,371,318
State		276	199	4,889,341	6,005,364
Municipal		7,820	6,235	39,364	28,200
Intra-sector Obligations		-	-	2,947,521	1,945,240
Return on third-party capital					
Interest	33	1,123,635	284,605	4,359,962	2,567,031
Rentals		3,229	4,449	26,653	13,900
Interest on equity					
Dividends	28.7	710,041	1,031,667	710,041	1,031,667
Additional dividends proposed	28.7	-	-	-	-
Legal reserve	28.7	106,773	140,909	106,773	140,909
Profit Retention		1,318,647	1,645,602	1,318,647	1,645,602
Net income for the year from discontinued operations		-	(48,467)	-	(48,467)
Realization of Reserve		(397,289)		(397,289)	
Minority interests in profits		-	-	244,165	250,655
Retained earnings (Accumulated losses)		567,900	(397,289)	445,683	(254,026)
		3,600,862	3,035,277	18,735,824	17,056,995

7. Statements of changes in equity

FINANCIAL YEAR ENDED DECEMBER 31, 2022 (In thousands of Reais)

Note	Capital	Stock issuance cost	Other capital reserves	Profit reserves			Additional dividends proposed	Retained earnings (accumulated losses)	Other comprehensive income	Total attributed to controlling shareholders	Noncontrolling Interest	Consolidated total
				Legal reserve	Profit retention	Retention of retained earnings due to a change in the accounting practices						
Balances at January 01, 2021 (restated)	3,363,685	(65,723)	373,551	303,058	2,897,964	62,539	10,756	(170,611)	(297,093)	6,478,126	845,888	7,324,014
Capital increase	-	-	-	-	-	-	-	-	-	-	206,308	206,308
Payment of additional dividends	28.7	-	-	-	-	-	(10,756)	-	-	(10,756)	-	(10,756)
Transactions with investments	28.2	-	(70,976)	-	-	-	-	-	-	(70,976)	5,013	(65,963)
Treasury Stock Acquired	-	-	(40,431)	-	-	-	-	-	-	(40,431)	-	(40,431)
Gain on assignment to ILP Prog. of treasury stock	-	-	576	-	-	-	-	-	-	576	-	576
PUT investment	28.2	-	2,002	-	-	-	-	-	-	2,002	(2,864)	(862)
Variable compensation program (ILP)	28.2	-	(888)	-	-	-	-	-	-	(888)	378	(510)
Net income for the year (restated)	28.7	-	-	-	-	-	-	2,591,500	-	2,591,500	223,307	2,814,807
Proposed allocation of net income:												
. Legal Reserve	28.3	-	-	140,909	-	-	-	(140,909)	-	-	-	-
. Dividends	28.7	-	-	-	-	-	-	(1,031,667)	-	(1,031,667)	(238,755)	(1,270,422)
. Profit retention	28.4	-	-	-	1,645,602	-	-	(1,645,602)	-	-	-	-
Other comprehensive income, net of tax	28.9	-	-	-	-	-	-	-	119,665	119,665	9,134	128,799
Balances at December 31, 2021 - (restated)	3,363,685	(65,723)	263,834	443,967	4,543,566	62,539	-	(397,289)	(177,428)	8,037,151	1,048,409	9,085,560
Transfer of reserves	-	-	-	-	(397,289)	-	-	397,289	-	-	-	-
Treasury Stock Acquired	-	-	7,411	-	-	-	-	-	-	7,411	-	7,411
Capital increase as per the Board meeting held 03/24/2022	28.1	259	-	-	-	-	-	-	-	259	74,327	74,586
Capital increase through balance of profit reserves	28.1	843,500	-	-	(843,500)	-	-	-	-	-	-	-
Capital increase as per the Board meeting held 08/18/2022	28.1	621	-	-	-	-	-	-	-	621	-	621
Capital increase as per the Board meeting held 08/11/2022	28.1	738,310	-	-	-	-	-	-	-	738,310	-	738,310
Transactions with investments	28.2	-	764,103	-	-	-	-	-	-	764,103	363,990	1,128,093
Variable compensation program (ILP)	28.2	-	(2,336)	-	-	-	-	-	-	(2,336)	276	(2,060)
Gain on assignment to ILP Prog. of treasury stock	28.2	-	34	-	-	-	-	-	-	34	-	34
PUT investment	28.7	-	(31,722)	-	-	-	-	-	-	(31,722)	-	(31,722)
Tax incentive reserves - reinvestment	-	-	35,817	-	-	-	-	-	-	35,817	1,815	37,632
Net income for the year	-	-	-	-	-	-	-	2,135,461	-	2,135,461	292,559	2,428,020
Proposed allocation of net income:												
. Legal Reserve	28.3	-	-	106,773	-	-	-	(106,773)	-	-	-	-
. Dividends	28.7	-	-	-	-	-	-	(710,041)	-	(710,041)	(319,147)	(1,029,188)
. Profit retention	28.4	-	-	-	1,318,647	-	-	(1,318,647)	-	-	-	-
Other comprehensive income, net of tax	28.9	-	-	-	-	-	-	-	44,824	44,824	1,631	46,455
Balances at December 31, 2022	4,946,375	(65,723)	1,037,141	550,740	4,621,424	62,539	-	0	(132,604)	11,019,893	1,463,860	12,483,753

See the accompanying notes to the financial statements.

8. Social Balance Sheet

ENERGISA S/A CONSOLIDATED ANNUAL SOCIAL BALANCE SHEET - 2022 (In thousands of Reais)						
	2022			2021		
Net revenue (NR)	26,503,137			26,475,504		
Operating income (OI)	3,138,784			3,529,038		
Gross payroll (GP)	1,392,727			1,298,451		
2 - Internal Social Indicators	Amount	% of FPB	% over NR	Amount	% of FPB	% over NR
Food and Beverages	227,500	16.33%	0.86%	187,295	14.42%	0.71%
Compulsory social charges	173,611	12.47%	0.66%	292,585	22.53%	1.11%
Pension plans	53,378	3.83%	0.20%	65,032	5.01%	0.25%
Health	101,724	7.30%	0.38%	85,219	6.56%	0.32%
Occupational health and safety	61,665	4.43%	0.23%	39,358	3.03%	0.15%
Education	1,409	0.10%	0.01%	1,076	0.08%	0.00%
Culture	0	0.00%	0.00%	-	0.00%	0.00%
Training and professional development	8,737	0.63%	0.03%	12,161	0.94%	0.05%
Day care and day care allowance	6,088	0.44%	0.02%	4,488	0.35%	0.02%
Profit sharing	171,146	12.29%	0.65%	143,639	11.06%	0.54%
Other	26,044	1.87%	0.10%	20,168	1.55%	0.08%
Total - Internal Social Indicators	831,302	59.69%	3.14%	851,021	65.54%	3.21%
3 - External Social Indicators	Amount	% over RO	% over NR	Amount	% over RO	% over NR
Education	4,977	0.14%	0.02%	4,418	0.13%	0.02%
Culture	9,753	0.28%	0.04%	11,853	0.34%	0.04%
Health and sanitation	0	0.00%	0.00%	0	0.00%	0.00%
Sports	853	0.02%	0.00%	717	0.02%	0.00%
Combating hunger, and food security	0	0.00%	0.00%	0	0.00%	0.00%
Other	8,970	0.26%	0.03%	5,802	0.16%	0.02%
Total contributions to society	24,553	0.71%	0.09%	22,790	0.65%	0.09%
Taxes (not including social charges)	7,510,118	217.99%	28.34%	7,037,426	199.41%	26.58%
Total - External Social Indicators	7,534,671	218.71%	28.43%	7,060,216	200.06%	26.67%
4 - Environmental Metrics	Amount	% over RO	% over NR	Amount	% over RO	% over NR
Investments related to company production / operation	268,261	7.79%	1.01%	294,425	8.34%	1.11%
In external programs and/or projects	97,825	2.84%	0.37%	21,376	0.61%	0.08%
Total environmental investment	366,086	10.63%	1.38%	315,801	8.95%	1.19%
Regarding the establishment of annual targets to minimize waste and overall consumption in production/operations and improve resource usage efficiency, the company	() has no targets () performs 51 to 75% () performs 0 to 50% (X) performs 76 to 100%			() has no targets () performs 51 to 75% () performs 0 to 50% (X) performs 76 to 100%		
5 - Functional Staff Indicators	2022			2021		
Number of employees at period-end	16,676			15,649		
Number of new hires in the period	4,168			3,097		
Number of outsourced workers	5,233			5,791		
Number of trainees	333			287		
Number of employees over 45	2,204			1,922		
Number of women working at the company	3,100			2,863		
% management positions held by women	36.48%			28.82%		
Number of people of color working at the company	9,262			8,434		
% management positions held by people of color	26.62%			24.53%		
No of workers with handicaps or special needs	621			575		
6 - Material information regarding corporate citizenship	2022			2023 Targets		
Ratio of lowest to highest compensation paid by the company	46.85			46.85		
Total number of occupational injuries	29			23		
The social and environmental programs implemented by the company have been developed by:	(x) directors	() directors and managers	() all employees	(x) directors	() directors and managers	() all employees
The occupational health and safety standards were defined by:	(x) directors and managers	() all employees	() all + Cipa	(x) directors and managers	() all employees	() all + Cipa
In respect of trade union freedom, the right to collective bargaining and internal representation of workers, the company:	() does not get involved	(x) follows the OIT rules	() promotes and follows OIT	() does not get involved	(x) follows the OIT rules	() promotes and follows OIT
Private pension plans are extended to:	() directors	() top and middle management	(x) all employees	() senior management	() top and middle management	(x) all employees
Profit sharing is extended to:	() senior management	() top and middle management	(x) all employees	() senior management	() top and middle management	(x) all employees
When selecting suppliers the same ethical, social responsibility and environmental standards adopted by the company:	() are not addressed	() are suggested	(x) are demanded	() are not addressed	() are suggested	(x) are demanded
In respect of employee participation in voluntary programs, the company:	() does not get involved	() gives support	(x) offers organization and incentives	() does not get involved	() gives support	(x) offers organization and incentives
Total number of consumer grievances and complaints:	to the company 2,668,816	to Procon 10,269	at the Courts 38,669	by the company 2,668,816	to Procon 9,632	at the Courts 32,390
% of complaints and grievances addressed or resolved:	at the company 100%	at Procon 94%	at the Courts 41%	at the company 88%	at Procon 96%	in the Courts 48%
Total added value to be distributed (in R\$ thousand):	In 2022: 18,735,824			In 2021: 17,056,995		
Distribution of Added Value (DVA):	57% government shareholders	7% employees	0% third parties	48% government shareholders	7% employees	3% third parties
7 - Other Information	2022			2021		
7) Social investments						
7.1 - The Light for All Program						
7.1.1 - Government Investment	237,663			105,326		
7.1.2 - State Investment	0			0		
7.1.3 - Municipal Investment	0			0		
7.1.4 - Concession Operator Investment	47,614			46,057		
Total - Light for All program (7.1.1 to 7.1.4)	285,277			151,383		
7.2 - Energy efficiency program	84,484			54,262		
7.3 - Research and development program	42,878			36,835		
Total social investment (7.1 to 7.3)	412,639			242,480		

Board of Directors

(Elected at the 2022 A/EGM)

Ivan Müller Botelho
CEO

Ricardo Perez Botelho
Vice Chairman

Armando de Azevedo Henriques
Independent Board Member

Omar Carneiro da Cunha Sobrinho
Independent Board Member

Antonio Jose de Almeida Carneiro
Independent Board Member

José Luiz Alquéres
Independent Board Member

Luciana de Oliveira Cezar Coelho
Independent Board Member

Maurício Perez Botelho
Alternate member

Marcelo Silveira da Rocha
Alternate member

André da La Saigne de Botton
Independent Alternate Member

Fiscal Council

(Elected at the 2022 A/EGM)

Flavio Stamm
Board Member

Vania Andrade de Souza
Board Member

Mario Daud Filho
Board Member

Gilberto Lerio
Alternate member

Antonio Eduardo Bertolo
Alternate member

Emiliano Ricci Sanchez
Alternate member

Executive Board

Ricardo Perez Botelho
CEO

Mauricio Perez Botelho
CFO and Investor Relations Officer

Fernando Cezar Maia
Regulatory Affairs and Strategy Officer

José Marcos Chaves de Melo
Logistics and Supplies Officer

Daniele Araújo Salomão Castelo
Personnel Management Officer

Vicente Cortes de Carvalho
Accountant CRC-MG 042523/O-7