

Water Management

We are located in an area with semi-arid climate and average temperatures above 22°C. The creeks are dry for most of the year but run heavily in rainy periods. According to the World Resources Institute "Aqueduct Water Risk Atlas", the area has a low water stress, with a low to medium-high overall water risk.

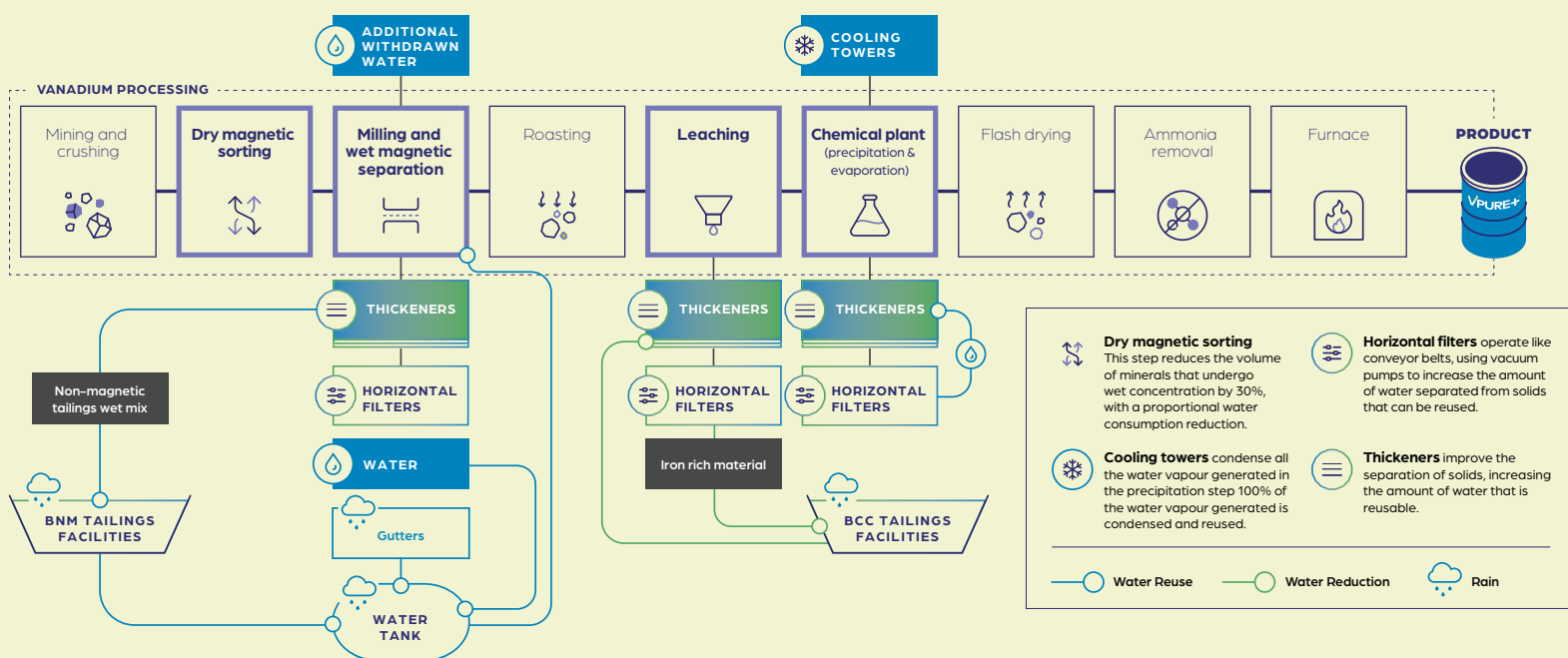
The Contas river is the most important in the region. In 1978 the state government built the Pedra dam and reservoir, to provide flood control, water for municipalities and irrigation as well as generation of electricity. The region is characterized by discrepant access to water. Small villages have little access to water and must rely on water trucks, while larger towns can pipe water directly from the Pedra reservoir and distribute it to their population.

Since 2022, Largo has represented the Bahia State Federation of Industries (FIEB) on the Recôncavo Sul River Basin Committee, chairing the water users sector. The committee supports water governance and raises public awareness of the basin's resources.

Management Approach

Water for the mine comes from the Pedra reservoir. Our first risk assessment (2008) classified the withdrawal of water from the reservoir as an indirect negative impact, of low intensity, local scope, not significant, stable and reversible. It also identified an opportunity for Largo to install additional infrastructure during construction to provide water to a village in the area, to create a direct, positive impact of high intensity and relevancy. Our Co-COOs are responsible for water stewardship, with a priority on efficient water management and preserving water quality in our semi-arid region. We address water scarcity and effluent contamination risks by minimizing consumption, maximizing reuse, and supplying water to the local community of Água Branca through our pipeline.

Water use is constantly monitored and reported weekly and monthly.



Water Discharges

Our operations are designed so there is no release of effluents into the environment. All effluents are treated and separated into liquids and solids. The liquids are re-used in different parts of the operations, and solids are discarded as hazardous or non-hazardous waste, depending on their characteristics.

In accordance with our permits, we monitor surface and ground water quality.

Following international standards such as the United States Environmental Protection Agency (EPA) standards, we collect water samples every three months, which are analyzed for more than 20 elements and compounds, oils, solids, turbidity etc. and reported to the Instituto do Meio Ambiente e Recursos Hídricos (INEMA). Several sampling locations are frequently dry, even during the rainy season.

