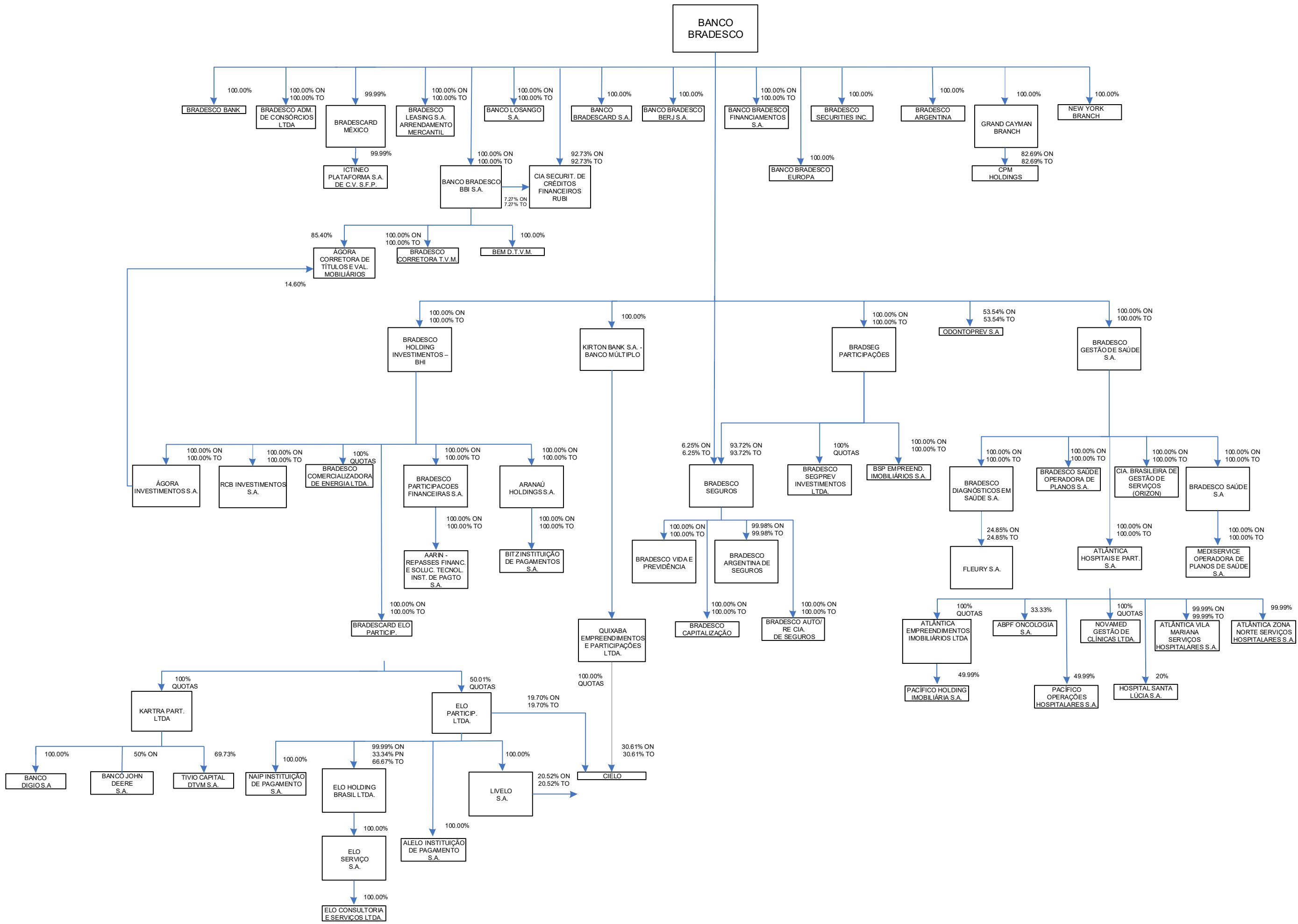


CORPORATE CHART



Reference Date: 31/March/2026

Joint-Stock Companies

ON - Common Shares that grant shareholders voting rights at Shareholder's Meetings (control shares);
 PN - Preferred Shares that do not grant shareholders voting rights at Shareholder's Meetings, with preference towards the receipt of dividends/IOEs; and
 TOTAL - Sum of the ON and PN shares, representing the equity stake.

Limited Liability Companies

QUOTAS – Represent the stake in the company's share capital.