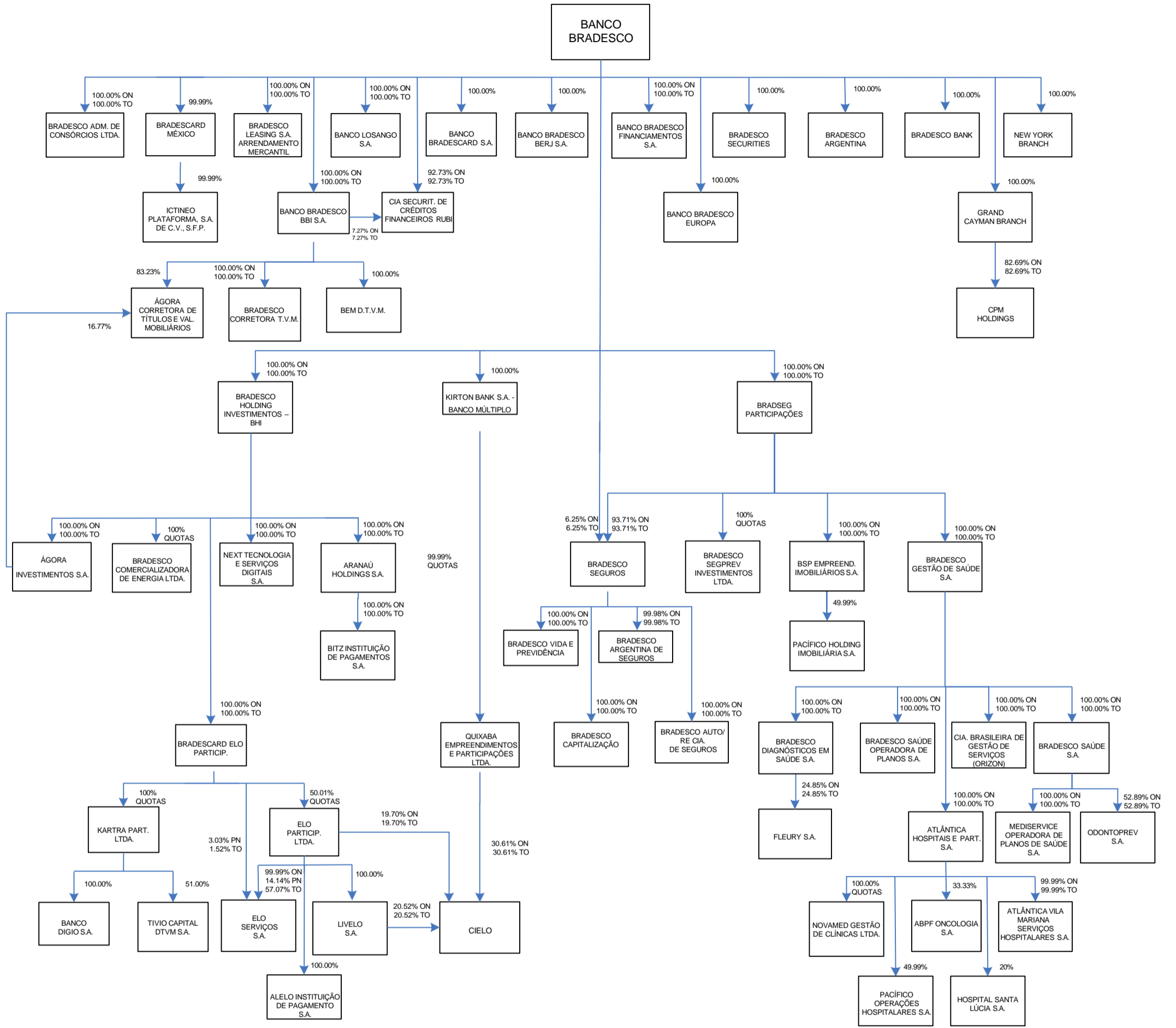


CORPORATE CHART



Reference Date: 31/Dec/2024

Joint-Stock Companies

ON – Common Shares that grant shareholders voting rights at Shareholder’s Meetings (control shares);
 PN – Preferred Shares that do not grant shareholders voting rights at Shareholder’s Meetings, with preference towards the receipt of dividends/IOEs; and
 TOTAL – Sum of the ON and PN shares, representing the equity stake.

Limited Liability Companies

QUOTAS – Represent the stake in the company’s share capital.

BANCO BRADESCO S.A.