



ACHIEVEMENTS OF THE MARFRIG VERDE+ PROGRAM

COMMITMENT AND TRANSPARENCY —



MARFRIG IS COMMITTED TO GENERATING A POSITIVE IMPACT

MARFRIG'S STRATEGIC PILLARS

SUSTAINABILITY



MORE THAN TEN YEARS OF INVESTMENT

IN SUSTAINABLE SOURCING AND IN COMBATING DEFORESTATION



2009

Commitment to the deforestation-free supply chain in the Amazon



2014

100% of farm perimeters in the Amazon



2010

Launch of the satellite geomonitoring platform



2018

Marfrig establishes a partnership with EMBRAPA, the Brazilian Company of Agricultural Research, to launch Carbon-Neutral Meat and Low-Carbon Meat



2019

Marfrig starts to monitor fire outbreaks in the Amazon via satellite



Publication
of the 2019 Annual
Sustainability Report

**MARFRIG
ANUNCIA
A 1ª CPR
VERDE
DO BRASIL.**

**Rural Product Notes
(CPR Verde)**
A credit line to promote
sustainability projects (Aug 2020)



Launches VIVA
A line of **Carbon-Neutral
Meat** products

2020

APR

JUL

AUG

SEP

Marfrig launches publicly
the **Marfrig Verde+ Plan**

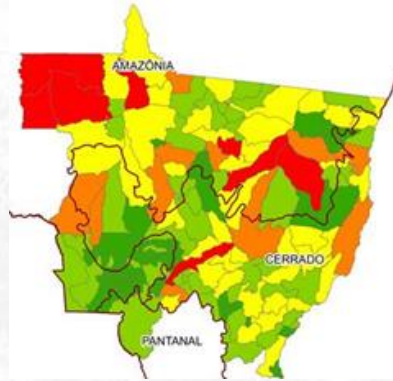


**The first animal protein
company in Brazil** to commit to
Science Based Targets



2020

OCT



Marfrig launches publicly
the **Deforestation Risk Map**

NOV

Marfrig is the beef
company
**best ranked in
FAIRR**



DEC



Marfrig is featured on
CDP 2020 in three
panels:

- Water (A)
- Forests (A-)
- Climate Change (A-)



Eligible
for Organic
production (USDA)

Marfrig is selected
to compose the
16th portfolio of B3's
Corporate Sustainability
Index (ISE)

ISEB3

Becomes part of the
**Sustainable Calf
Program (Programa
Bezerro Sustentável MT)**



MARFRIG'S COMMITMENT

To accelerate sustainability in the beef value chain, focused on **farmer inclusion**



100% of the chain with origin control and free of deforestation



Traceability



Transparency



VERDE+ IN ACTION

BASED ON THE PRODUCE, PRESERVE, INCLUDE (PCI) STRATEGY

PILLARS



Financial Mechanisms

To promote the development of new financial mechanisms that enable **farmer access**



Technical Assistance

To support farmers in the **implementation of technologies** and in the transition to **livestock** which reconciles **production and preservation**



Monitoring of Suppliers




To monitor **100% of direct and indirect suppliers:**

- By 2025 in the Amazon
- By 2030 in the Cerrado

FARMER + MARFRIG

+ PRODUCTIVE
+ PROFITABLE
+ SUSTAINABLE

ASSISTANCE, RESOURCES, AND MARKET VALUE FOR FARMERS

	 Financial Mechanisms	 Technical Assistance	 Monitoring of Suppliers
Direct Suppliers	<p>A livestock integration model based on the Calf Program</p> <p>Expansion of the integration model to the Cerrado biome</p> <p>Review of the Cattle Purchase Policy in accordance with the Risk Map</p>	<p>A technical assistance program for restoration, intensification, ILP (crop-livestock integration) and ILPF (crop-livestock-forestry integration)</p> <p>Review and update of the Marfrig Club protocol</p>	<p>To expand the monitoring system used in the Amazon biome and to adopt a purchasing policy adjusted to the Cerrado biome</p> <p>Reinclusion in the formal chain of blocked suppliers in the Amazon biome that are legally pending</p>
Indirect Suppliers	<p>A profitability program for small and medium (indirect) farmers</p>	<p>A Technical Assistance Program for intensification, restoration, and regularization</p> <p>To establish a Technical Assistance network for intensification and restoration</p>	<p>To develop and apply a risk mitigation map for indirect suppliers in the Amazon and in the Cerrado</p> <p>Development of initiatives in the Amazon biome to mitigate risks</p> <p>To develop a monitoring solution for indirect suppliers and landscapes in the Amazon and the Cerrado biomes</p>
Industry Approach	<p>Industry development mechanisms for market recognition for environmental services</p> <p>New credit models for small and medium farmers.</p>	<p>To stimulate the development of long-term pre-competitive Technical Assistance models to support farmers</p>	<p>To mitigate leaks by blocking direct suppliers - cattle laundering, using the standardized cattle purchase protocol</p> <p>To integrate the control of animal origin with environmental data</p>

ACHIEVEMENTS OF VERDE+ 2020

Carbon-Neutral Meat integration models

A partnership with EMBRAPA

Conclusion of the
risk mitigation map
in the Amazon and
in the Cerrado

A program for sustainable calf production

Inclusion in the program

Restoration programs
for reinclusion of farmers

Expansion of the
Calf Program in
partnership with
IDH

**A unified cattle
purchasing protocol**
in the Legal Amazon

Indirect monitoring tools

A blockchain platform
(CONECTA) for farmer
integration

MARFRIG CLUB

A follow-up protocol and
support hub for farmer
regularization

Monitoring of the Cerrado

Adaptation of the
geomonitoring system



THE CALF PROGRAM



To **support calf farms**, so that they become profitable and investable



To enable an **innovative approach** to deal with indirect cattle supply issues



To increase the income of **small calf farmers** through training, technical assistance, and credit access

DATA BASE



LIVESTOCK



DEFORESTATION



SOCIAL
INDICATORS



GRAZING

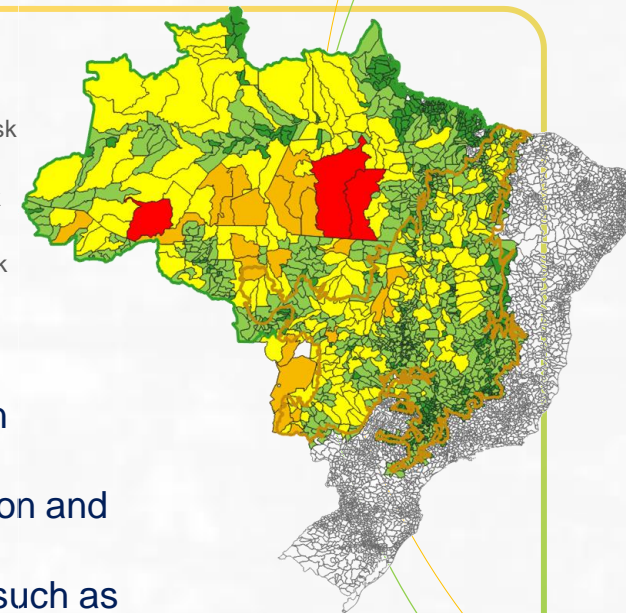


NATIVE VEGETATION

Definition of five classes (Very Low, Low, Medium, High, and Very High) **for each variable studied**

- Very high risk
- High risk
- Medium risk
- Low risk
- Very low risk

Level of association between deforestation and increase in variables, such as effective herd



RISK MAP



MARFRIG CLUB



A FOLLOW-UP PROTOCOL AND SUPPORT HUB FOR REGULARIZATION OF FARMERS



A program
implemented
in **2010**



Leveraging of
good practices
and **technical**
assistance



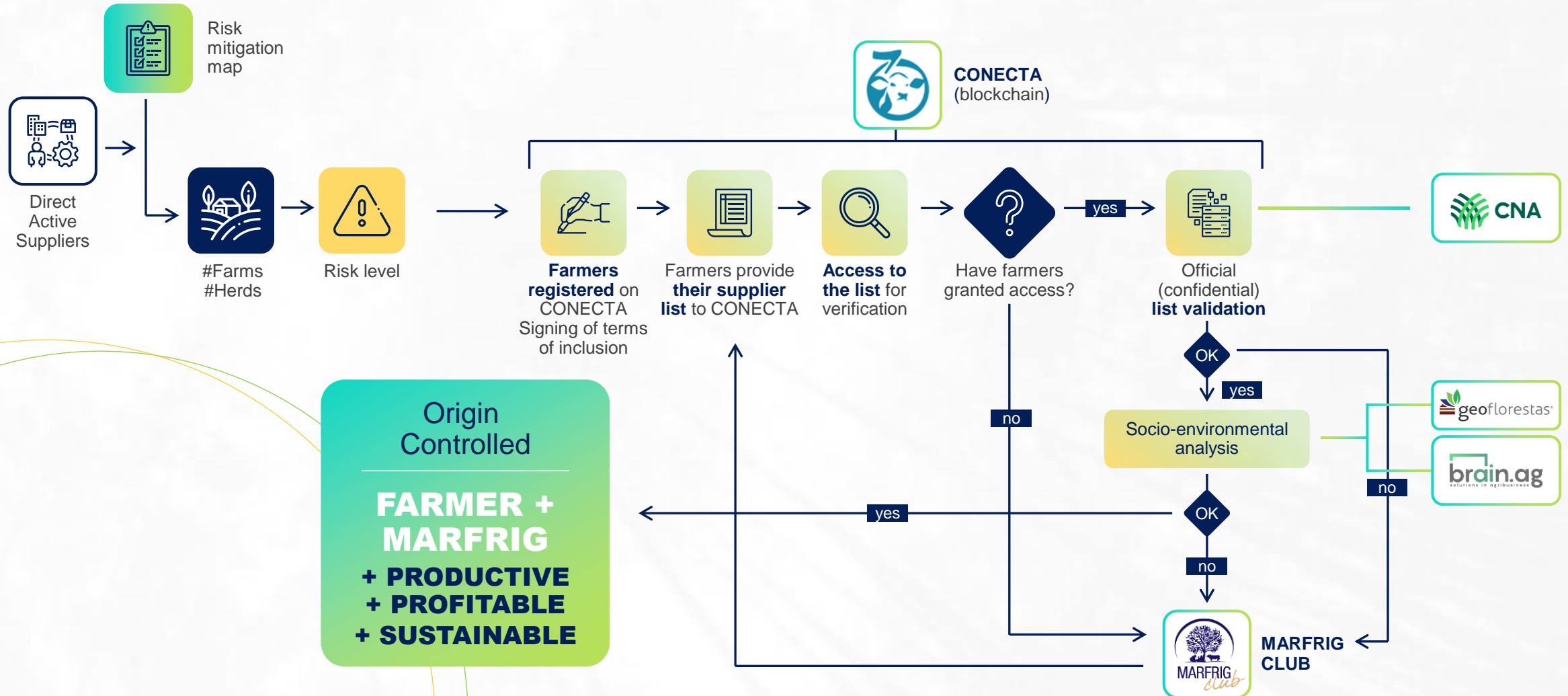
Dissemination of
the **Calf Program**



Technicians present
in **all our units**

INTEGRATED INITIATIVES

THAT TURN COMMITMENT INTO REALITY



2020: A HIGH INDEX OF ORIGIN IDENTIFICATION

62% IN THE AMAZON | 47% IN THE CERRADO

THE
AMAZON



2021

2022

2025

2030

47%

THE
CERRADO



MARFRIG'S PRINCIPLE: FARMER INCLUSION AND SUPPORT



PRODUCTIVE



PROFITABLE



SUSTAINABLE

AND ENGAGEMENT IN THE PRESERVATION OF BIODIVERSITY

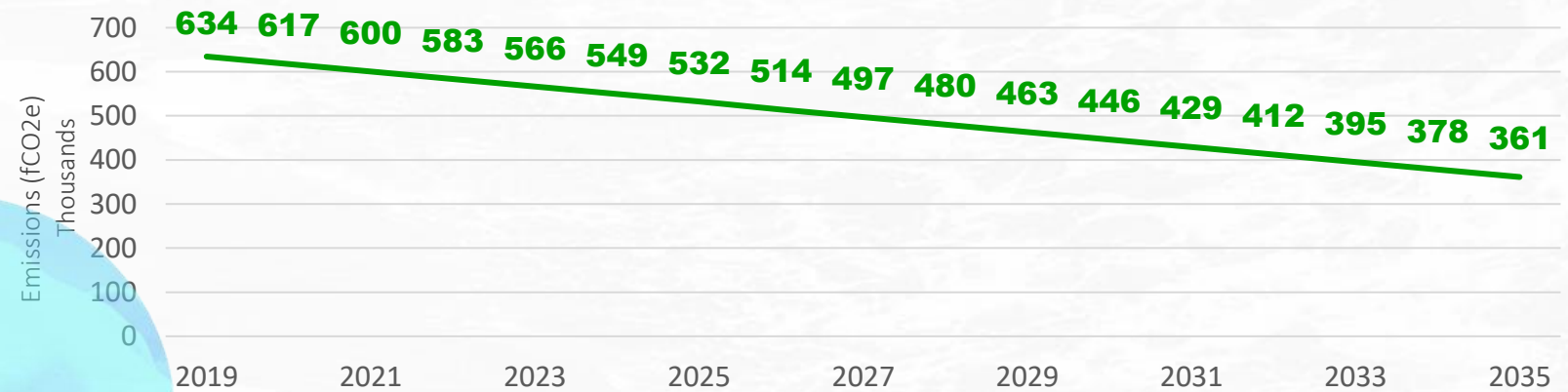
**BY INCLUDING THEM, WE BECOME
AN EFFECTIVE PART OF THE SOLUTION!**



OUR EMISSIONS REDUCTION GOALS

Scopes 1 and 2

Direct emissions + electricity



GOAL:

To reduce absolute emissions (tCO2e) from 2019 to 2035 in

43%
(2.7% p.a.)

in line with efforts to limit global warming to 1.5°

Calculations made by **Marfrig** in accordance with the **Science-based targets** methodology



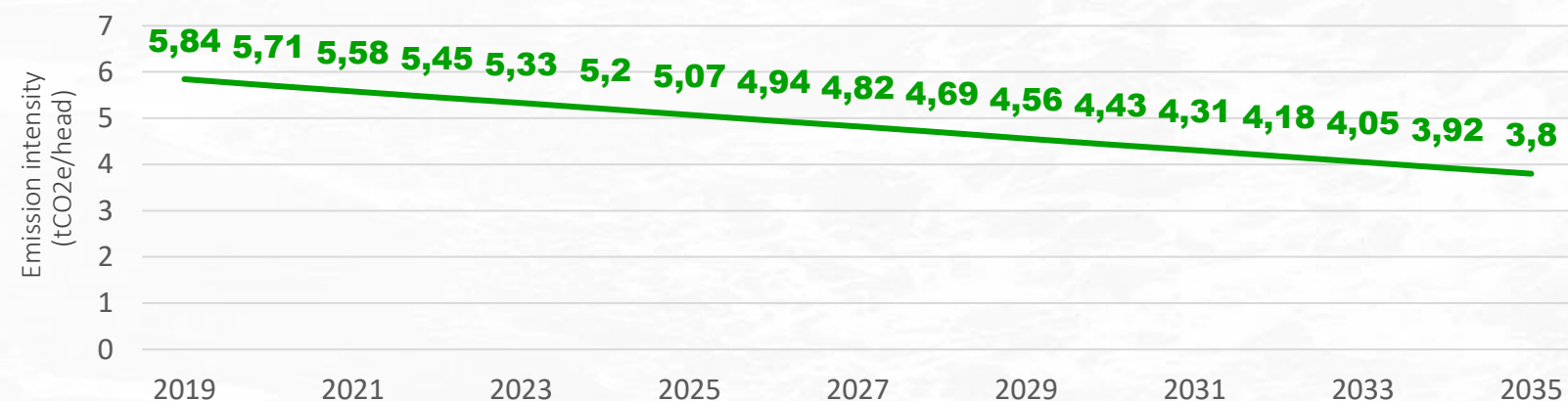
SCIENCE
BASED
TARGETS

DRIVING AMBITIOUS CORPORATE CLIMATE ACTION

OUR EMISSIONS REDUCTION GOALS

Scope 3

Indirect emissions



GOAL:

To reduce the intensity of emissions
(tCO2e/head)
from 2019 to 2035 in

35%
(2.2% p.a.)

in line with efforts to limit
global warming to 1.5°

Calculations made by **Marfrig**
in accordance with the
Science-based targets
methodology



SCIENCE
BASED
TARGETS
DRIVING AMBITIOUS CORPORATE CLIMATE ACTION

ESG: MARFRIG LEADS GLOBAL INDICES

THE FOCUS ON THE ESG AGENDA

**ALLOWED MARFRIG TO
BECOME THE BEST
GLOBALLY EVALUATED
COMPANY IN THE
INDUSTRY**



1st in the Industry
4th globally



A A- A-



Tier **2**

ISEB3



Índice
Carbono
Eficiente **ICO2**





ACHIEVEMENTS OF THE MARFRIG VERDE+ PROGRAM

COMMITMENT AND TRANSPARENCY

