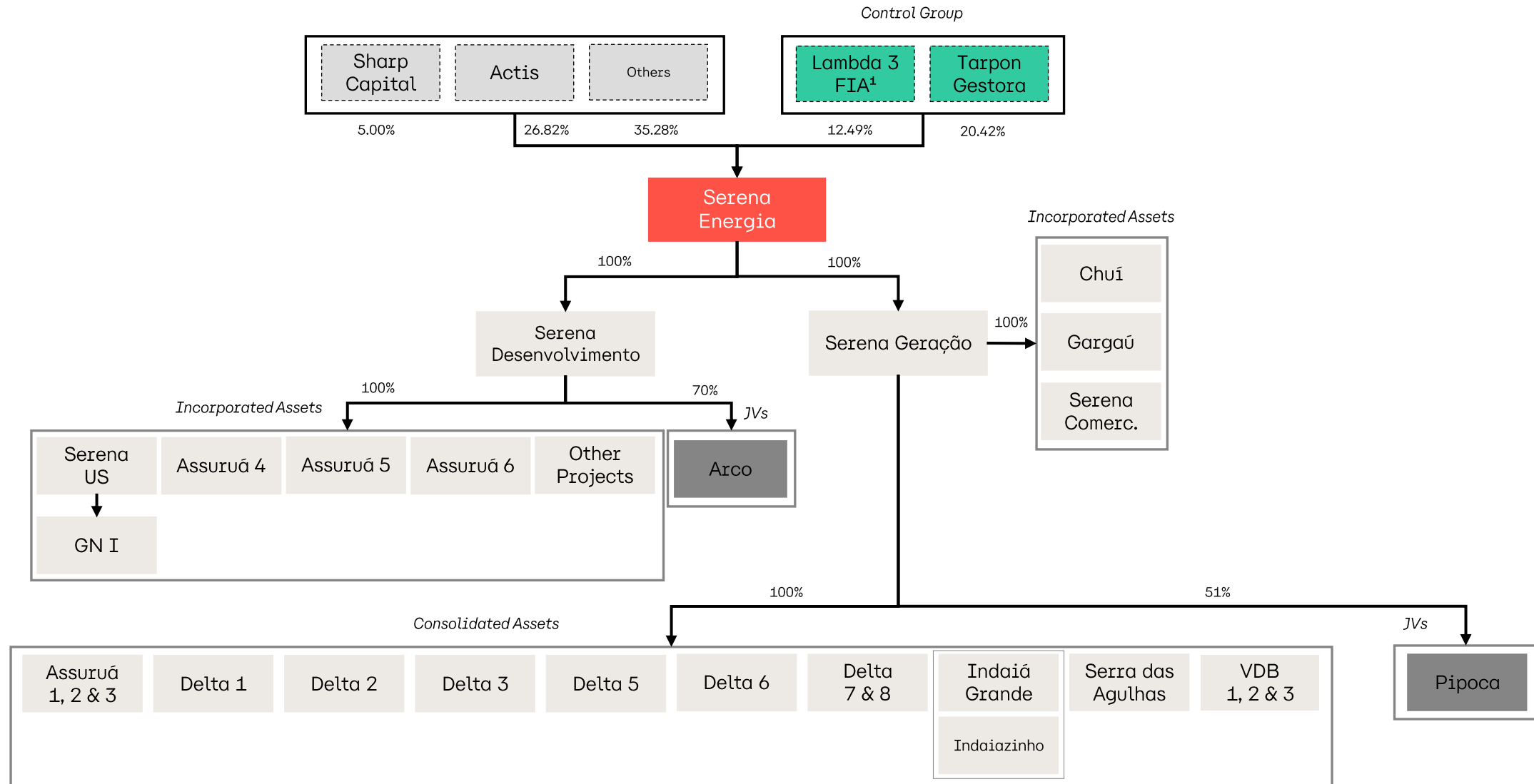


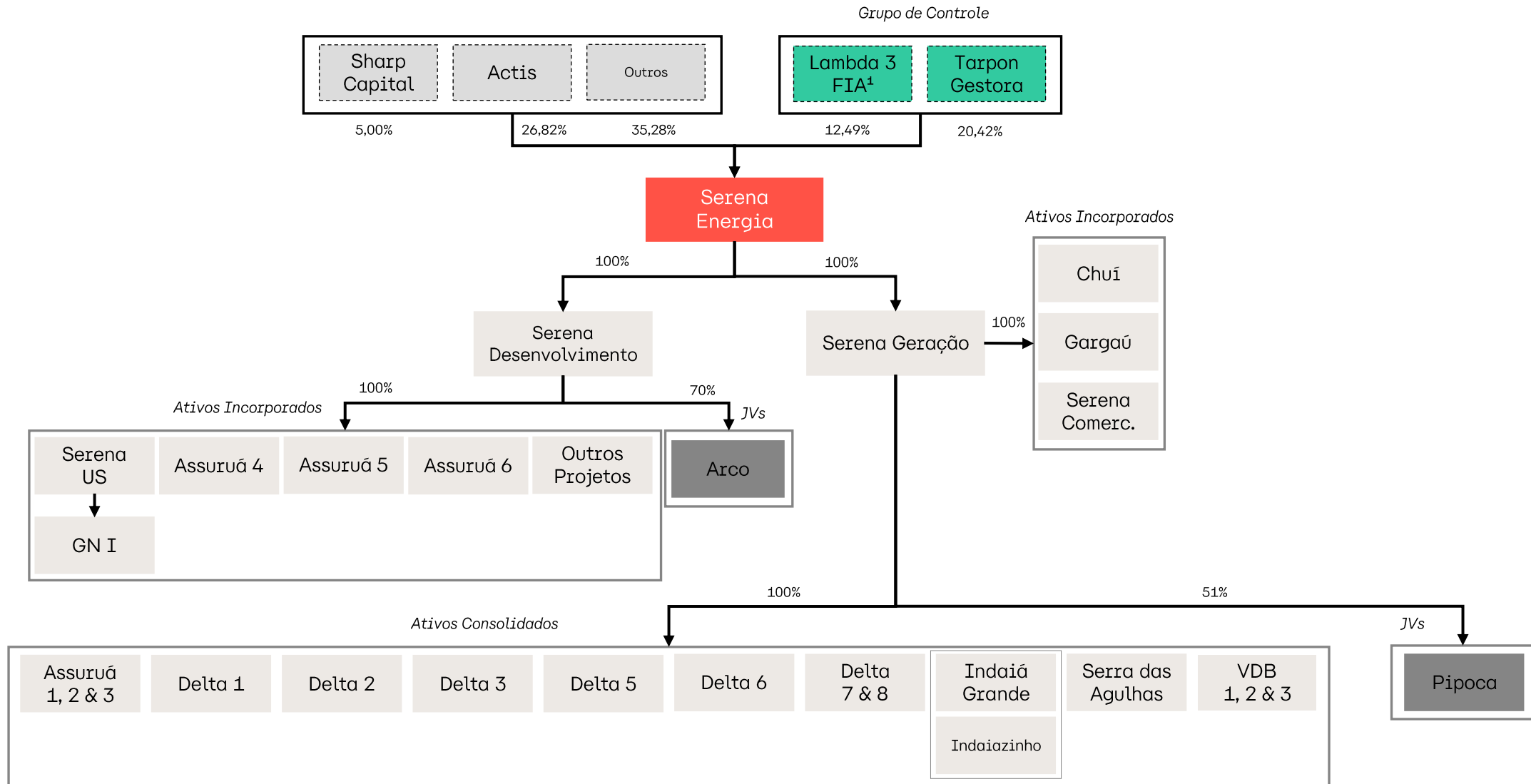


# Corporate Structure



<sup>1</sup> Considers shares held by Lambda3 FIA and the entities Lambda Energia S.A., Lambda II Energia S.A., Lambda III Energia S.A.

# Estrutura Societária



<sup>1</sup> Considera as ações detidas pelo Lambda3 FIA e pelas entidades Lambda Energia S.A., Lambda II Energia S.A., Lambda III Energia S.A.