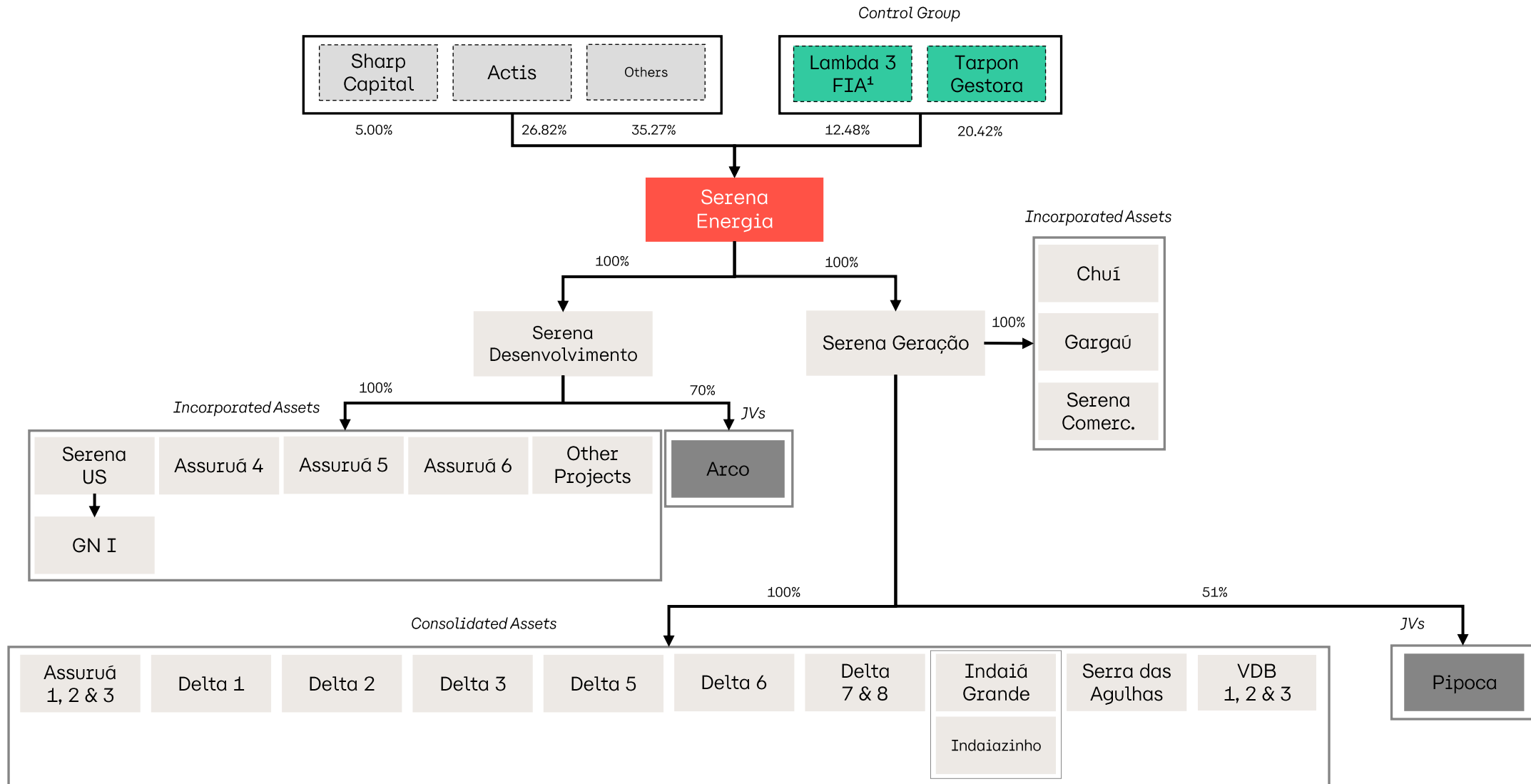


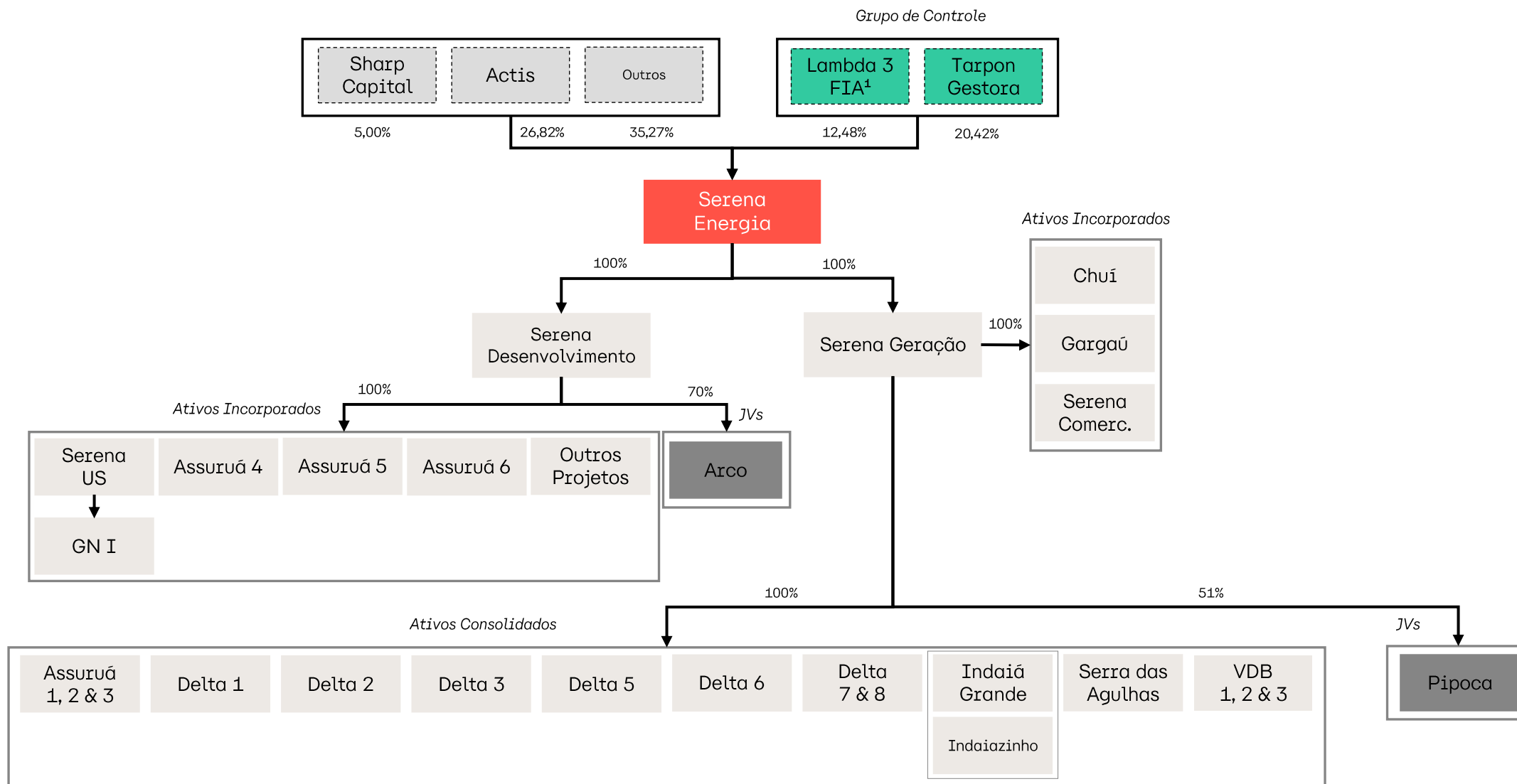


Organization Chart



¹ Considers shares held by Lambda3 FIA and the entities Lambda Energia S.A., Lambda II Energia S.A., Lambda III Energia S.A.

Organograma



¹ Considera as ações detidas pelo Lambda3 FIA e pelas entidades Lambda Energia S.A., Lambda II Energia S.A., Lambda III Energia S.A.