



Life Science of Cannabis

Disclaimer

This presentation contains "forward-looking statements" as that term is defined in Section 27A of the Securities Act and Section 21E of the Securities Exchange Act of 1934, as amended. Statements in this presentation which are not purely historical are forward-looking statements and include any statements regarding beliefs, plans, expectations or intentions regarding the future. Such forward-looking statements include, among other things, use of proceeds and the development, costs and results of current or future actions and opportunities in the sector. Actual results could differ from those projected in any forward-looking statements due to numerous factors. Such factors include, among others, the inherent uncertainties associated with new projects and development stage companies, our ability to raise the additional funding we will need to continue to pursue our exploration and development program, and our ability to retain important members of our management team and attract other qualified personnel.

These forward-looking statements are made as of the date of this news release, and we assume no obligation to update the forward-looking statements, or to update the reasons why actual results could differ from those projected in the forward-looking statements. Although we believe that any beliefs, plans, expectations and intentions contained in this presentation are reasonable, there can be no assurance that any such beliefs, plans, expectations or intentions will prove to be accurate. Investors should consult all of the information set forth herein and should also refer to the risk factors disclosure outlined in our annual report on Form 10-K for the most recent fiscal year, our quarterly reports on Form 10-Q and other periodic reports filed from time-to-time with the Securities and Exchange Commission.

We are...Life Science Company

Develop medical products from cannabis and other botanicals

Management team:



Richard Rusiniak, CEO



Paul Ramsay, President



Ross Eastley, CFO



Scientific teams:

13 Scientists – at Western University

10 Scientists – at University of Guelph

In excess of 100 years of experience in management, design/process, commercialization, product development, accounting/CFO, and sales

Current company status...



completed

- Health Canada licence to sell - import - export
- Mentabinol® - THC formulated commercial ready product
- Unlimited supply of cannabis and botanicals
- High production capacity with licensed partners
- Global distribution – USA, European, South Africa Agreements



What we do...

- Develop proprietary medical products

utilizing

- cannabis oils (THC, CBD) + other botanical extracts



Health problems we solve... Dr. Steven Laviolette team Western University



Depression, Anxiety, and Schizophrenia related Symptoms

Problem:

Pre-clinical behavioral model of depression/anxiety, demonstrates neuronal, molecular and neuropsychiatric negative side effects from chronic exposure to THC

Solution:

Mentabinol® - Due to THC co-administration with “BX”, the anhedonic (depression-like) effects are reversed.



Memory Impairment

Problem:

Pre-clinical behavioral model of memory impairment (Novel Object Recognition) demonstrates chronic exposure to THC caused a significant object memory impairment

Solution:

Mentabinol® Due to THC co-administration with “BX”, the memory impairment effect is completely blocked.

Health problems we solve... Dr. Steven Laviolette team Western University



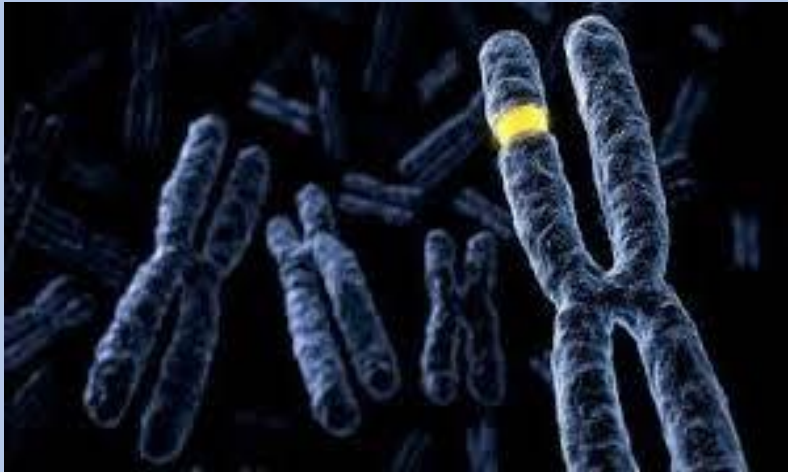
Hyperactive Activity

Problem:

Chronic THC exposure caused a significant dysregulation of the dopamine neurotransmitter system, shown by hyperactive activity rates in recordings of single dopamine neurons in the ventral tegmental area

Solution:

Mentabiol® Due to THC co- administration with “BX”, the hyperactive activity effect is completely blocked.



Gene Vulnerability

Problem:

Consistent with clinical genetic findings in human population showing that polymorphic abnormalities in the gene encoding Akt (protein kinase B) increase vulnerability to cannabis-induced neuropsychiatric side-effects

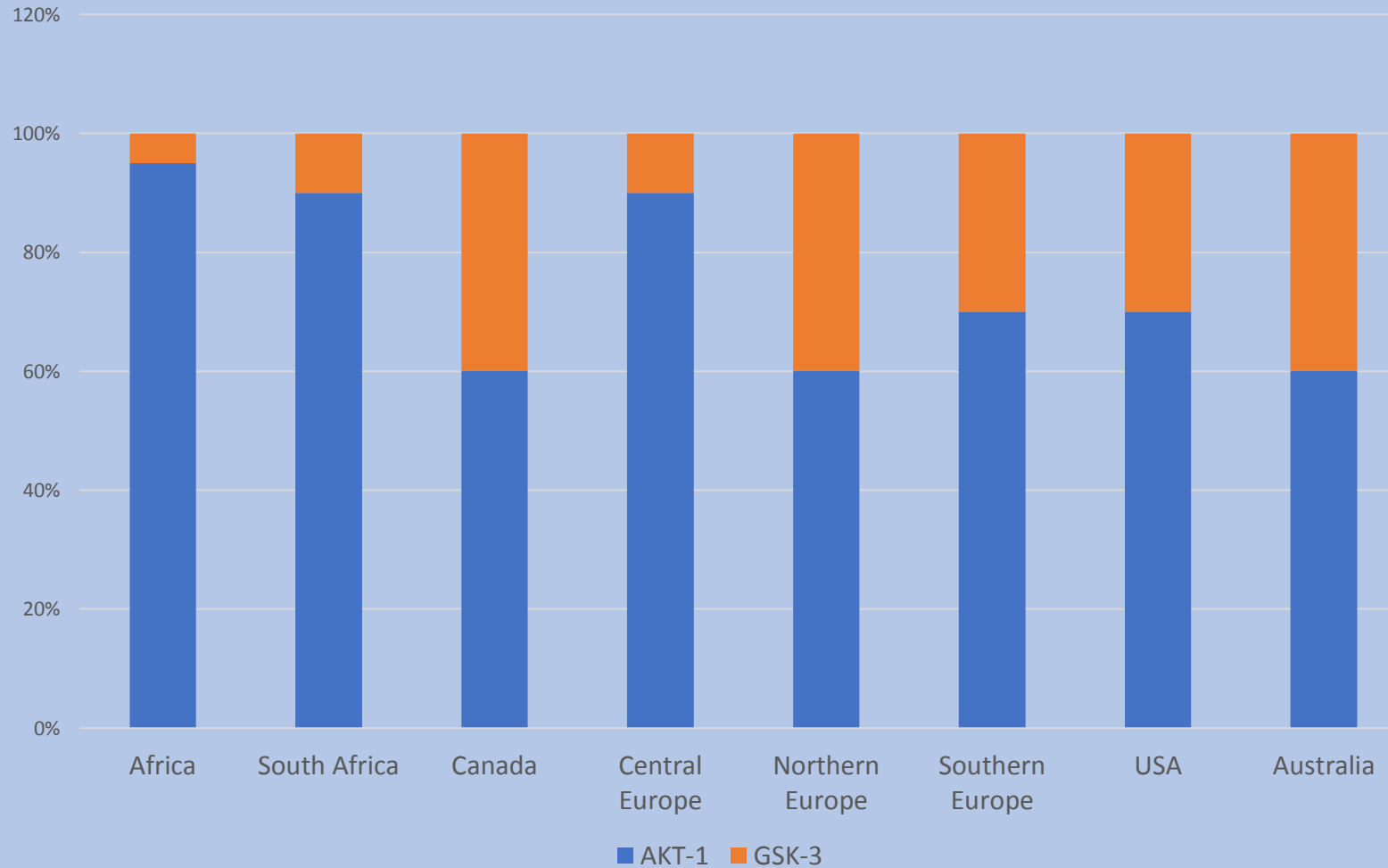
Solution:

Mentabiol® Due to THC co- administration with “BX”, the gene vulnerability is completely blocked.



World population vulnerability to THC exposure

Regional (%) of AKT-1 and GSK-3 gene distribution



Our solution...

Mentabinol[®] - THC formulation

to help with:

- Anxiety
- Depression
- PTSD
- Schizophrenia
- Addiction

without negative psychotic side-effects

Alternative to opioids



Medical use

Examples of our solution...

Mentabinol® - THC formulation

Recreational & Medical use

Opioid deaths per year:

- Worldwide - 69,000 people (8 every hour)
- USA - 42,000
- Canada - 4,600

Pre- opioid crisis countries:

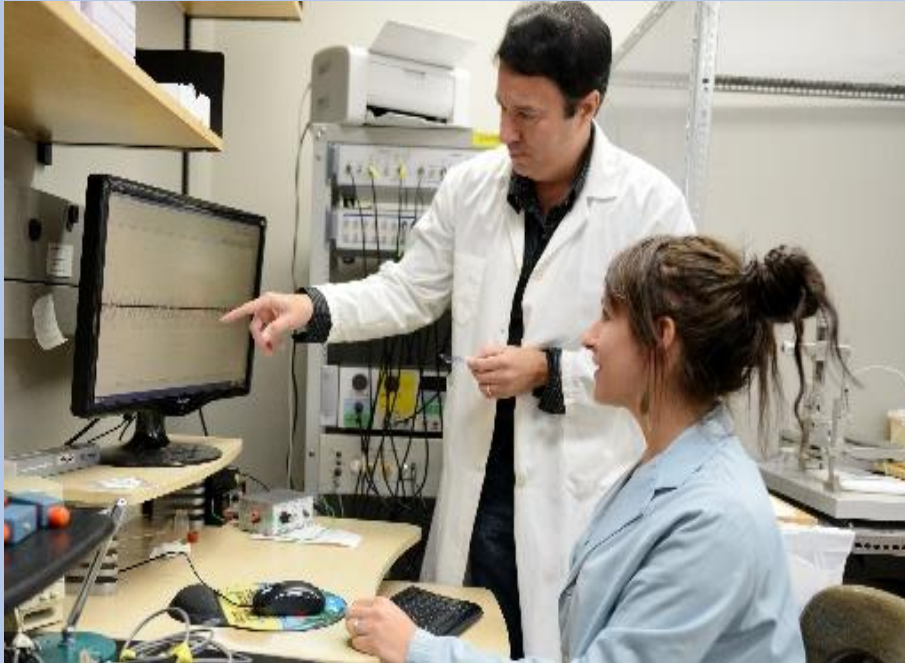
We can be pro-active and implement our solution before inevitable deadly and costly consequences – trillions \$\$\$.

Addresses Opioid Epidemic



Our advantage:

Scientific team at Western University
Interface between Neurobiology, Psychology and Emotion



A 13-member team:

- multi-discipline departments
- development of novel pharmacotherapies for mental health
- research backed by pre-clinical trials on animals
- Commercial ready discovery - **Mentabinol**[®]

Dr. Steven Laviolette, Neuroscientist - 13 years of cannabis research



Global growth with minimal capital expenditures

- Power of the license – no infrastructure
- No large growing or production facilities
- No costly equipment and scheduled maintenance
- No compliance with SOP to satisfy regulations

anaQuest
MEDICAL CORP

How we do it ...



We:

Apply science combined with 100 years of management experience

Surround ourselves with the best.....

Partner with global distribution organizations

Engage domestic and international regulatory expertise



CanaQuest
MEDICAL CORP



CanaQuest
MEDICAL CORP

Signed preliminary agreements:

Sourcing, processing, packaging and distribution
medical clinics and health care practitioners

Canada, USA, Globally

ADC Biomedical - Partners and Collaborators

Supply, Processing, Packaging and Distribution
with

THC and CBD Licensed Producers

What we learned by being in business...



Cannabis space, post-prohibition – very fast pace

We have to be adaptable - open to repositioning and redirecting, continuously.

The biggest challenges.....education:

- There is no medical cannabis without real science,
- CanaQuest has the only viable, sustainable solution, Mentabinol™.

Four take-aways:

- Qualify, qualify, qualify!,
- Stay away from companies/people that waste your time,
- Ensure you surround yourself with like minded, top quality people,
- Be passionate!



CanaQuest
MEDICAL CORP

Thank you



The Joy of Health

THC - Mentabinol®



CanaQuest
MEDICAL CORP