



# Exploration Report 4Q23 and 2023

## **Nexa Reports Fourth Quarter and Full Year 2023 Exploration Results**

**Luxembourg, February 8, 2024** – Nexa Resources S.A. (“Nexa Resources”, “Nexa”, or “Company”) is pleased to provide today the drilling and assay results from the fourth quarter and full year of 2023. This document contains forward-looking statements.

### **Summary**

Nexa’s drilling strategy for 2023 was focused on near-mine expansion brownfield and infill drilling, including the Aripuanã project which is in the final ramp-up stage. Additional exploratory drilling also occurred in greenfield projects with a potential favorable perspective.

At the end of 2023, cumulative drilling production reached 257,482 meters, of which 85,199 meters were exploratory drilling, including the Babaçu infill at Aripuanã, and 172,284 meters were operational infill drilling. Total exploratory drilling in 4Q23 was 15,586 meters, of which 12,138 meters took place in Peru, 2,281 meters in Brazil and 1,167 meters in Namibia. Exploratory drilling planned for 1Q24 includes 9,500 meters in Peru with seven rigs and 2,500 meters in Brazil with three rigs, totaling 12,000 meters.

Commenting on the report, Jones Belther, Senior Vice President of Mineral Exploration & Business Development, said “During 2023 we achieved 97% of the planned activities with the execution of 85,199 meters of exploratory drilling out of the planned 88,196 meters. We achieved outstanding results in our brownfield program at Aripuanã with the Babaçu infill drilling confirming thick and high-grade mineralization, supporting the expectation of converting Inferred Mineral Resources into Probable Mineral Reserves. Drilling at Babaçu in 4Q23 also confirmed favorable high-grade intersections such as holes BRAPD000218 and BRAPD000220, which displayed, respectively, 43.2 meters with 13.75% Zn, 5.68% Pb, 0.26% Cu, 85.09 g/t Ag and 0.29 g/t Au, and 24.5 meters with 21.44% Zn, 9.43% Pb, 0.08% Cu, 71.26 g/t Ag and 0.25 g/t Au.

During 4Q23 our brownfield exploration programs have progressed as planned and assay results continue to indicate that we can potentially extend the life of mine of our current operations. At Cerro Lindo, orebodies OB-8 and OB-9 continued to be extended with intersections greater than 4.0 meters as per hole PECLD07242 from OB-8 with 34.8 meters @ 2.81% Zn, 0.89% Pb and 0.12% Cu. At the Pasco complex, the Integración orebody confirmed continuity in depth below the 3300 level in three holes as per hole PEEPD02702 with 3.5 meters @ 2.99% Zn, 1.15% Pb, 0.46% Cu, 130.97 g/t Ag and 0.42g/t Au.

Finally, in respect of the Hilarión project, at the El Padrino area, two holes confirmed mineralized skarn zone continuity to the southwest, displaying multiple parallel lenses as was the case with hole PEPADD000001 with 6.2 meters @ 2.70% Zn, 0.37% Pb, 0.431% Cu, and 38.08g/t Ag”.

### **Cerro Lindo**

In 4Q23, the exploratory drilling program at the Cerro Lindo project focused on extending the mineralization of the OB-8 and OB-9 targets, as well as identifying new mineralized zones at the Pucasalla target and its extensions. In addition, we continue to drill the geophysical anomaly of the Patahuasi Millay target to identify the presence of possible mineralized zones.

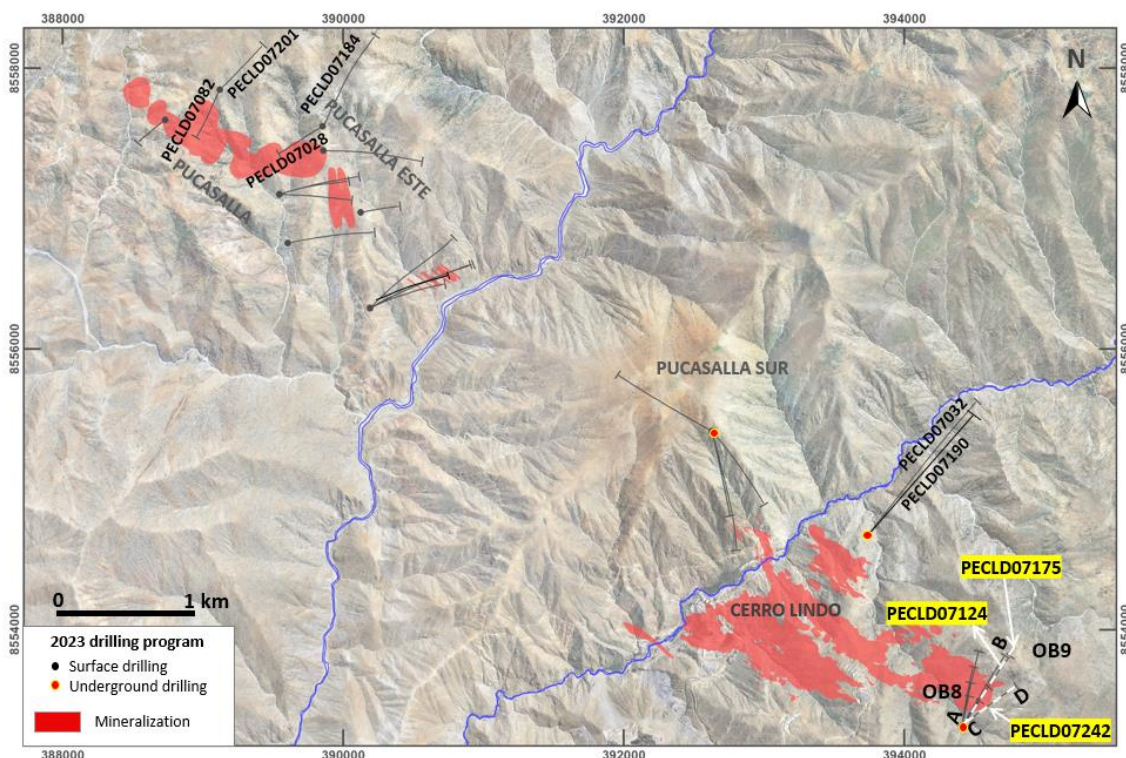
During 4Q23, a total of 5,175 meters of exploratory drilling and 7,524 meters of infill drilling were carried out, which totaled 27,510 meters and 51,401 meters in 2023, respectively. Underground exploration drilling included 1,310 meters in OB-8. Surface drilling included 2,394 meters at Pucasalla and Pucasalla East, and 1,471 meters at Patahuasi Millay.

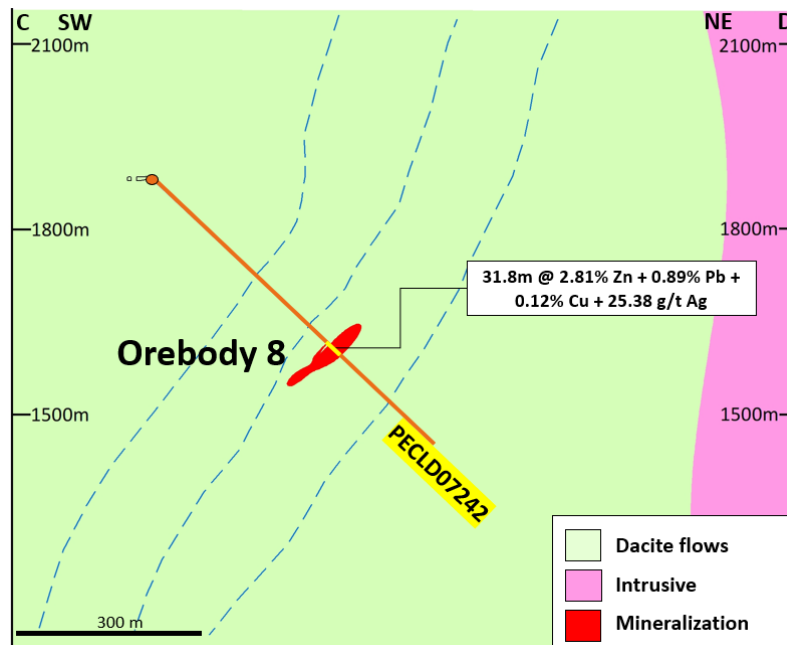
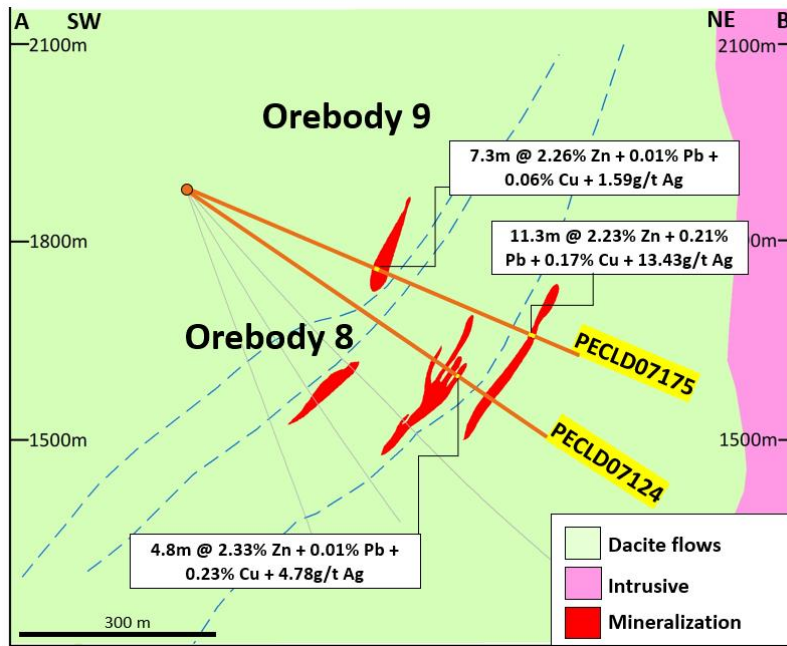
The results obtained during the fourth quarter reported the continuity of mineralization in the OB-8 and OB-9 orebodies, such as the 31.8 meter interval with 2.81% Zn, 0.89% Pb, 0.12% Cu, 25.38 g/t Ag and 0.07 g /t Au and the 11.3 meter interval with 2.23% Zn, 0.21% Pb, 0.17% Cu, 13.43 g/t Ag and 0.08 g/t Au, with both intercepts corresponding to the southeastern extension of the OB-8. In addition, we obtained a mineralized intercept in OB-9 measuring 7.3 meters with 2.26% Zn, 0.01% Pb, 0.06% Cu, 1.59 g/t Ag and 0.01 g/t Au.

Exploratory drilling to identify new mineralized zones in the Pucasalla target and extensions and in Patahuasi Millay identified the presence of sulfide zones, but without significant results during this quarter.

CERRO LINDO - 4Q23 - MAIN INTERSECTIONS									
Hole_id	Ore body	From	To	Length	Zn%	Pb%	Cu%	Ag g/t	Au g/t
PECLD07124	OB8	497.0	501.8	4.8	2.33	0.01	0.23	4.78	0.03
PECLD07175	OB9	310.0	317.3	7.3	2.26	0.01	0.06	1.59	0.01
And	OB8	565.8	577.0	11.3	2.23	0.21	0.17	13.43	0.08
PECLD07242	OB8	393.0	424.8	31.8	2.81	0.89	0.12	25.38	0.07
PECLD07082	Pucasalla	NSI	NSI	NSI	NSI	NSI	NSI	NSI	NSI
PECLD07201	Pucasalla	NSI	NSI	NSI	NSI	NSI	NSI	NSI	NSI
PECLD07028	Pucasalla Este	NSI	NSI	NSI	NSI	NSI	NSI	NSI	NSI
PECLD07184	Pucasalla Este	NSI	NSI	NSI	NSI	NSI	NSI	NSI	NSI
PECLD07032	Patahuasi Millay	NSI	NSI	NSI	NSI	NSI	NSI	NSI	NSI
PECLD07190	Patahuasi Millay	NSI	NSI	NSI	NSI	NSI	NSI	NSI	NSI

Note: Intervals with assays not reported here have no consistent samples > 2.0% Zinc + Lead or assay results are pending. True widths of the mineralized intervals are unknown at this time. NSI refers to "no significant intercept". PAR refers to "pending assay results".





For 1Q24, we plan to continue drilling from surface the Pucasalla target with one rig towards the southeast extension (1,500m) and, investigating the Patahuasi Millay target with one rig (2,700m) and the extensions of orebodies OB-8, OB-6A and OB-9 with three additional rigs (3,990m).

### Vazante

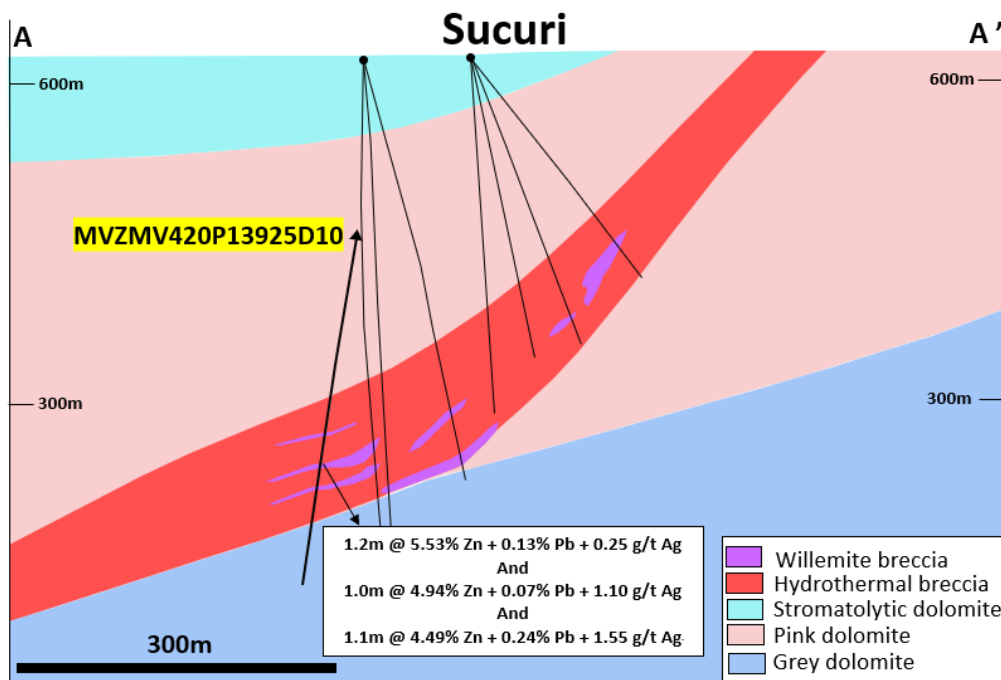
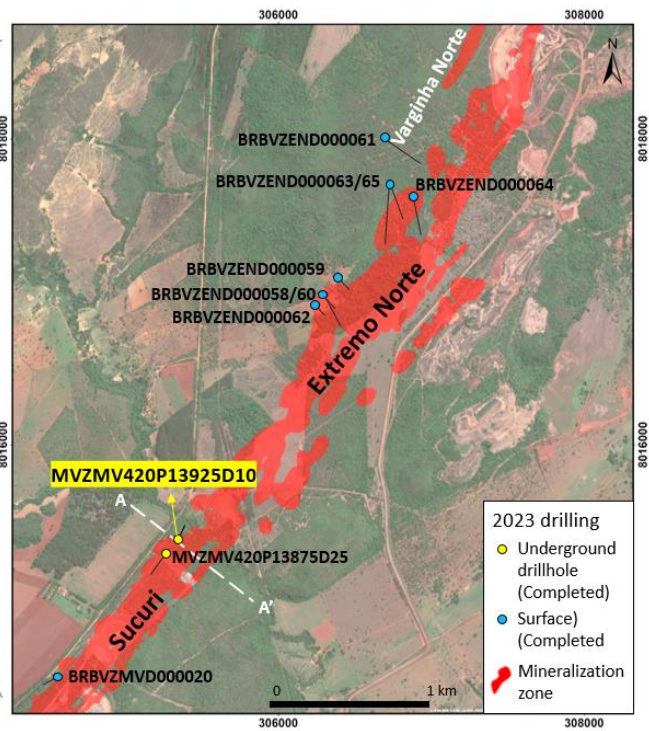
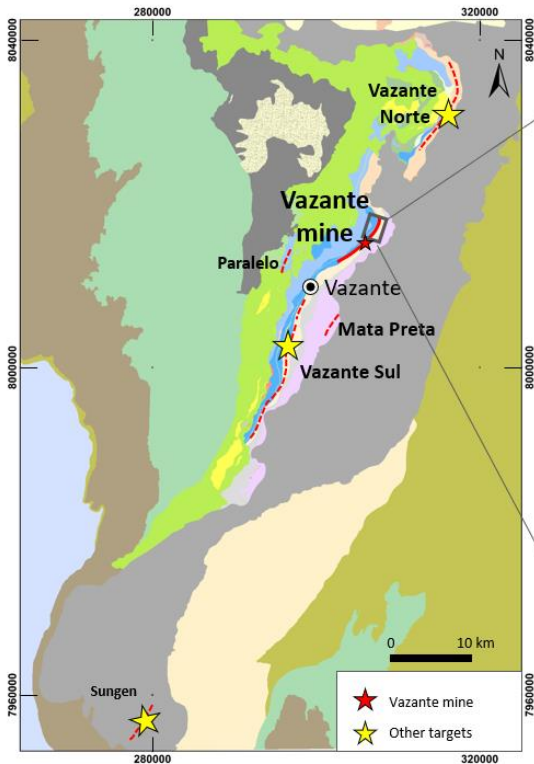
In 2023, the brownfield exploration at Vazante focused on expanding existing mineralized zones in the northern and southern extensions of the mine. In 4Q23, 99 meters of exploratory drilling were completed in the Vazante Sul target with one rig. Another 8,804 meters of infill drilling were carried out with three rigs at the Vazante mine totaling 7,296 meters and 37,870 meters in 2023, respectively.

The exploratory drilling program at the Vazante project ended in the first week of October with a total of 99 meters of drilling in order to complete the exploratory holes not completed during the third quarter. Therefore, the results reported in this report refer to chemical analysis pending to date. The reported results identified the extent of the Sucuri orebody at depth, such as the results from hole MVZMV420P13925D10 that intercepted three mineralized zones, highlighting the 1.2 meter interval with 5.53% Zn, 0.13% Pb and 0.25 g/t Ag.



VAZANTE - 4Q23 - MAIN INTERSECTIONS							
Hole_id	Ore body	From	To	Length	Zn%	Pb%	Ag g/t
MVZMV420P13925D10	Sucuri	213.0	214.2	1.2	5.53	0.13	0.25
And	Sucuri	248.0	249.0	1.0	4.94	0.07	1.10
And	Sucuri	269.0	270.1	1.1	4.49	0.24	1.55

Note: Intervals with assays not reported here have no consistent samples > 2.5% Zinc + Lead or assay results are pending. True widths of the mineralized intervals are unknown at this time. NSI refers to "no significant intercept". PAR refers to "pending assay results".



For 1Q24, we plan to continue the extension drilling program in the Sucuri area, where we plan to drill 1,100 meters with one rig.

## Aripuanã

During 4Q23, the Aripuanã exploration strategy focused on increasing Mineral Resources at the Babaçu exploration target, which lies to the southeast of the Ambrex deposit, and on starting drill at the Massaranduba target to the southeast of Babaçu.

In 4Q23, 771 meters of exploration infill drilling were completed at Babaçu with one rig and an additional 1,411 meters of exploratory drilling was completed at Massaranduba with one rig, totaling 19,645 meters and 2,135 meters in 2023, respectively. At the Aripuanã mine, a total of 7,537 meters of mining infill drilling was completed in 4Q23 with five rigs, totaling 38,922 meters in 2023.

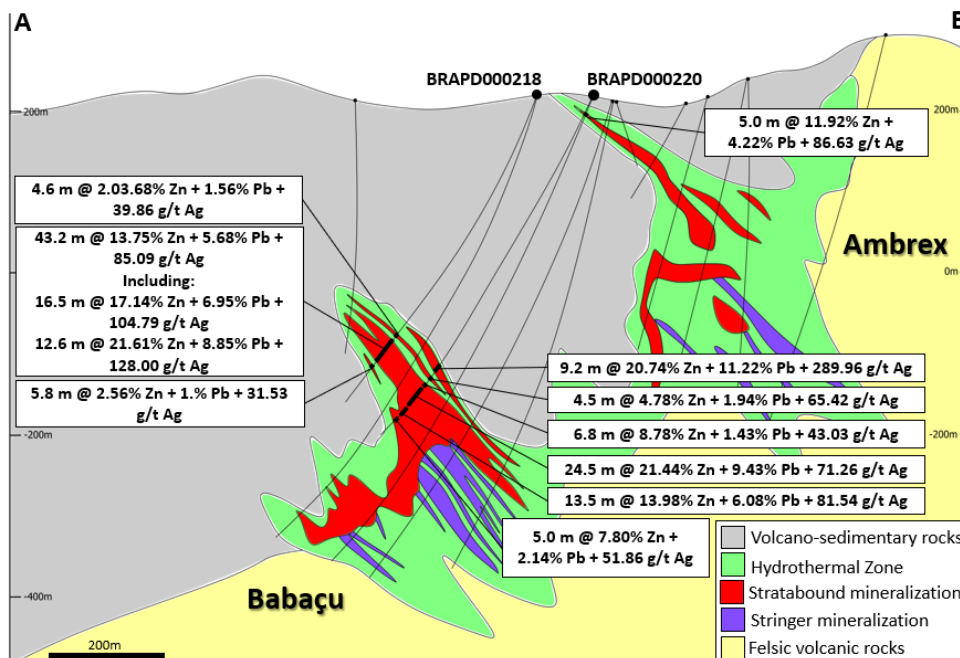
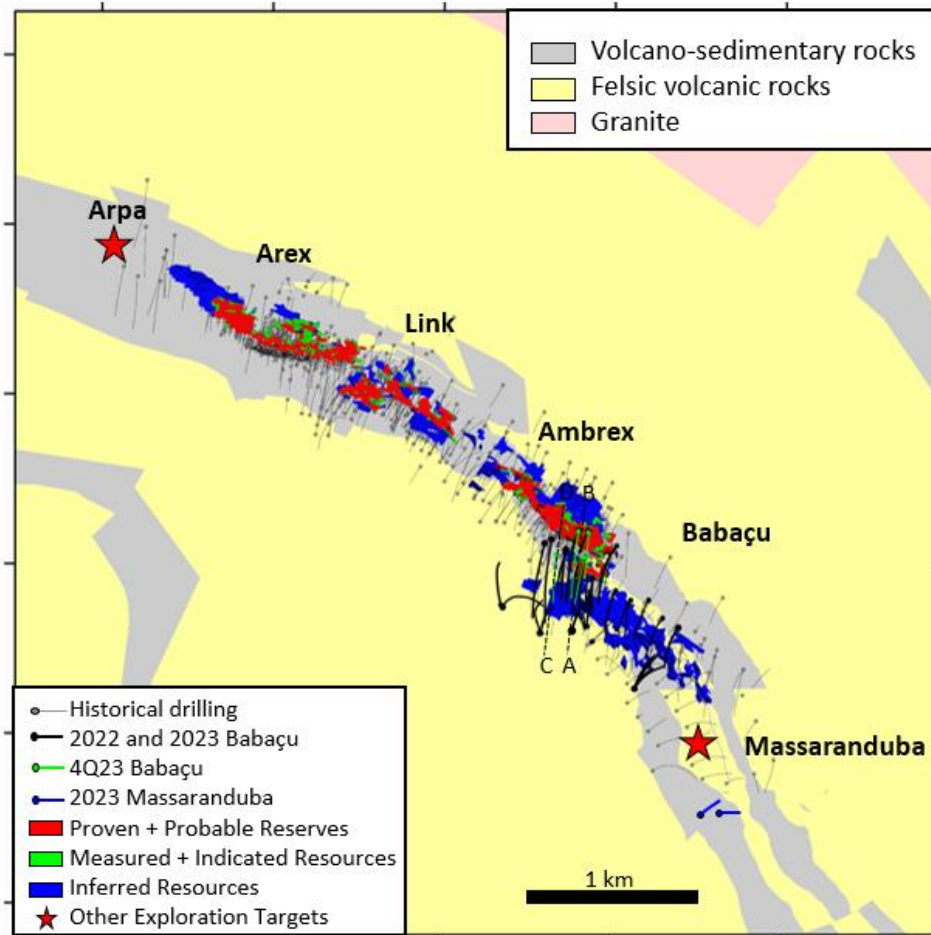
During 4Q23, the last three scheduled holes of the Babaçu deposit infill campaign were carried out. The results obtained confirmed the continuity of mineralization with high polymetallic contents, as in the case of holes BRAPD000218 and BRAPD000220, for example, which displayed, respectively, 43.2 meters with 13.75% Zn, 5.68% Pb, 0.26% Cu, 85.09 g/t Ag and 0.29 g/t Au and 24.5 meters with 21.44% Zn, 9.43% Pb, 0.08% Cu, 71.26 g/t Ag and 0.25 g/t Au.

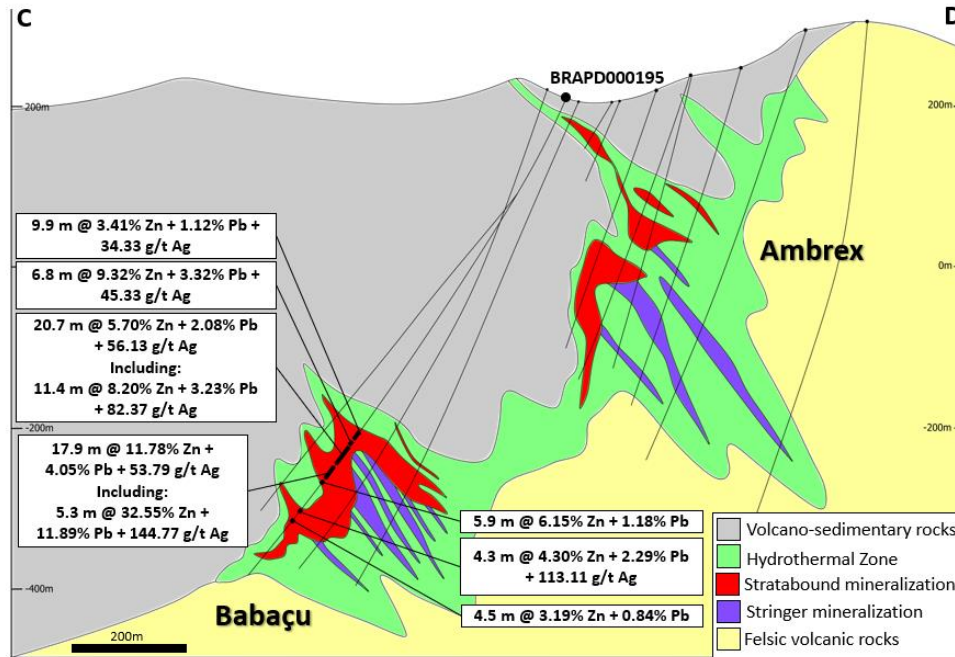
Drill hole BRAPD000221 also intercepted the Ambrex orebody, a portion known as the "ramp", due to its offset, intersecting several mineralized zones such as the 25.6 meters interval with 7.12% Zn, 5.21% Pb, 0.17% Cu, 191.85 g/t Ag and 0.13 g/t Au.

In addition, we began exploratory drilling at the Massaranduba target, a possible southeastern continuation of the Aripuanã deposit, with visual evidence of mineralization, but with pending assay results. This target will be the focus of the project exploration program in 2024.

ARIPUANÃ - 4Q23 - MAIN INTERSECTIONS									
Hole_id	Ore body	From	To	Length	Zn%	Pb%	Cu%	Ag g/t	Au g/t
BRAPD000218	Babaçu	483.0	487.7	4.6	2.03	1.56	0.04	39.86	0.06
And	Babaçu	499.0	542.2	43.2	13.75	5.68	0.26	85.09	0.29
Including	Babaçu	499.0	515.5	16.5	17.14	6.95	0.58	104.79	0.49
Including	Babaçu	529.6	542.2	12.6	21.61	8.85	0.07	128.00	0.29
And	Babaçu	562.1	567.9	5.8	2.56	1.08	0.02	31.73	0.03
BRAPD000220	Ambrex	40.4	45.4	5.0	11.92	4.22	0.08	86.63	0.18
And	Babaçu	532.9	542.1	9.2	20.74	11.22	0.02	289.96	0.23
And	Babaçu	545.0	549.5	4.5	4.78	1.94	0.03	65.42	0.08
And	Babaçu	558.8	565.6	6.8	8.78	1.43	0.09	43.03	0.08
And	Babaçu	580.7	605.2	24.5	21.44	9.43	0.08	71.26	0.25
Including	Babaçu	585.3	599.0	13.7	34.03	15.51	0.11	113.20	0.41
And	Babaçu	606.5	620.0	13.5	13.98	6.08	0.14	81.54	0.19
And	Babaçu	627.0	632.0	5.0	7.80	2.14	0.07	51.86	0.28
BRAPD000221	Ambrex	306.3	331.9	25.6	7.12	5.21	0.17	191.85	0.13
Including	Ambrex	310.0	317.0	7.0	13.22	10.01	0.17	337.73	0.18
Including	Ambrex	319.0	331.9	12.9	6.46	4.54	0.20	183.67	0.15
BRAPD000195	Babaçu	658.4	666.4	8.0	2.76	0.47	0.04	12.22	0.03
And	Babaçu	675.4	685.3	9.9	3.41	1.12	0.03	34.33	0.10
And	Babaçu	686.2	693.0	6.8	9.32	3.32	0.04	45.33	0.08
And	Babaçu	701.1	721.8	20.7	5.70	2.08	0.03	56.13	0.10
Including	Babaçu	701.1	712.6	11.4	8.20	3.23	0.05	82.37	0.11
And	Babaçu	732.1	750.0	17.9	11.78	4.05	0.04	53.79	0.18
Including	Babaçu	736.0	741.3	5.3	32.55	11.89	0.07	144.77	0.47
And	Babaçu	754.2	760.1	5.9	6.15	1.18	0.03	25.52	0.06
And	Babaçu	830.5	834.5	4.0	2.92	0.42	0.02	21.73	0.04
And	Babaçu	842.9	847.2	4.3	4.30	2.29	0.01	113.11	0.09
And	Babaçu	943.5	948.0	4.5	3.19	0.84	0.07	24.46	0.04

Note: Intervals with assays not reported here have no consistent samples > 3.0% Zinc or >0.5% Copper or >0.5 g/t Gold or assay results are pending. True widths of the mineralized intervals are unknown at this time.





For 1Q24, we will continue drilling the Massaranduba target focused on identifying new mineralized zones. We plan to drill 1,400 meters with two rigs.

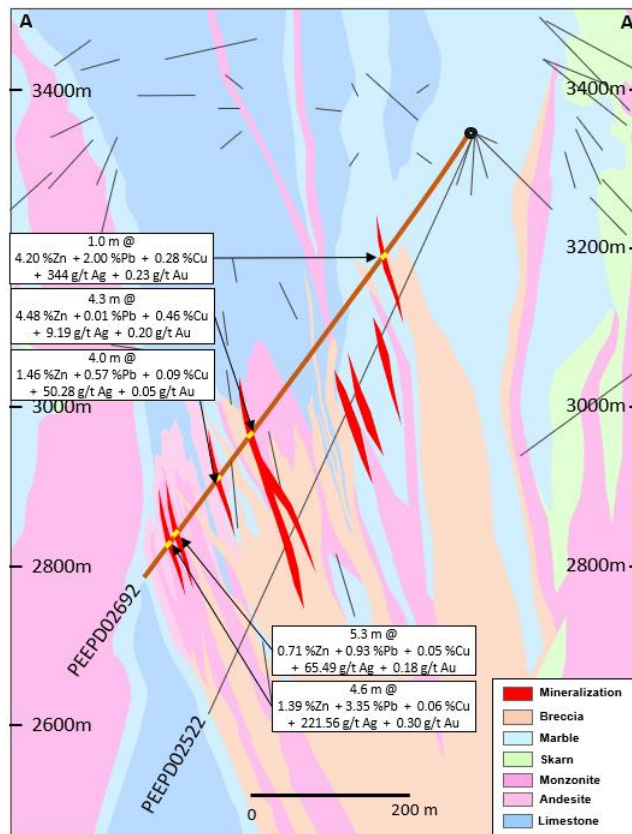
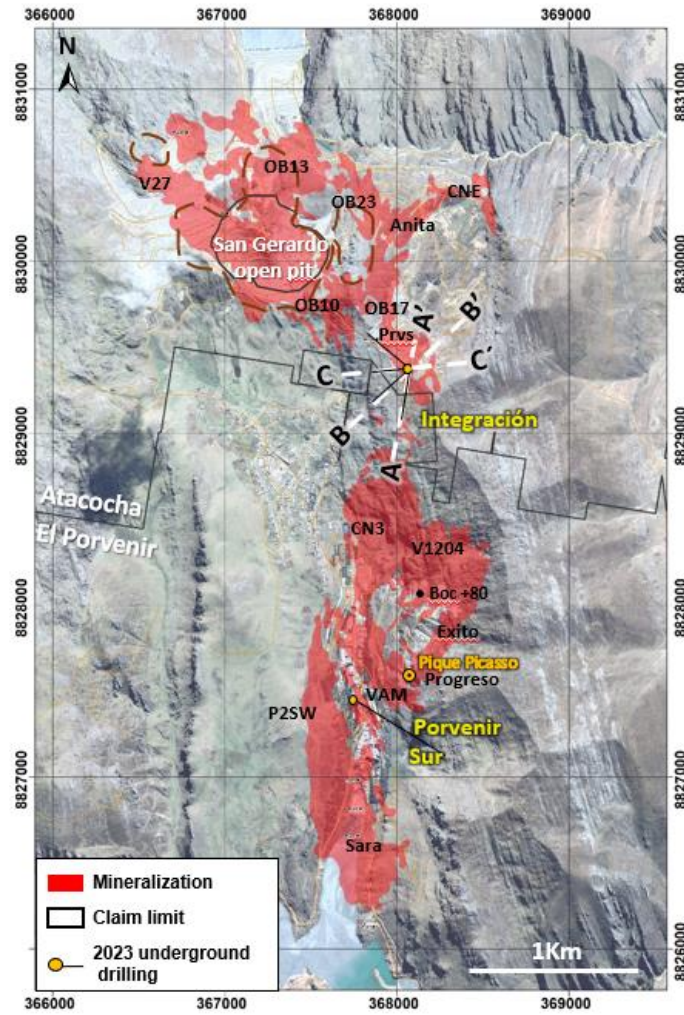
### El Porvenir

The El Porvenir exploration drilling program, completed in 4Q23, focused on the extension of mineralization at Target Integración. In 4Q23, 1,338 meters of underground exploratory drilling with one rig and 124 meters of mining infill drilling were executed, totaling 9,321 meters and 34,565 meters in 2023, respectively. We continue drilling the Integración target from the 3300 level and the results intercepted during 4Q23 confirmed the extent of mineralization with high metal content, as evidenced in drill hole PEEPD02702 with an intercept of 3.5 meters with 2.99% Zn, 1.15% Pb, 0.46% Cu, 130.97 g/t Ag and 0.42 g/t Au.

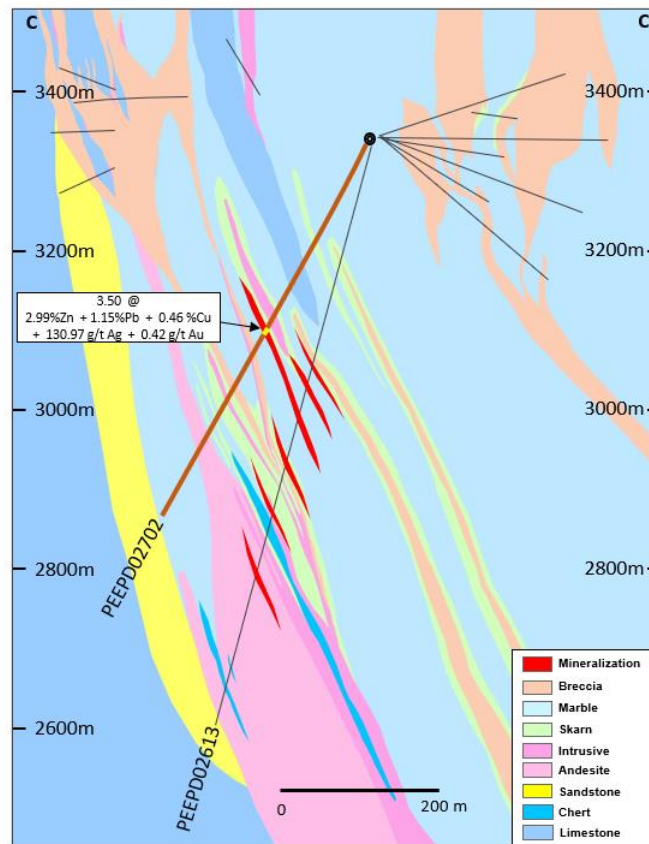
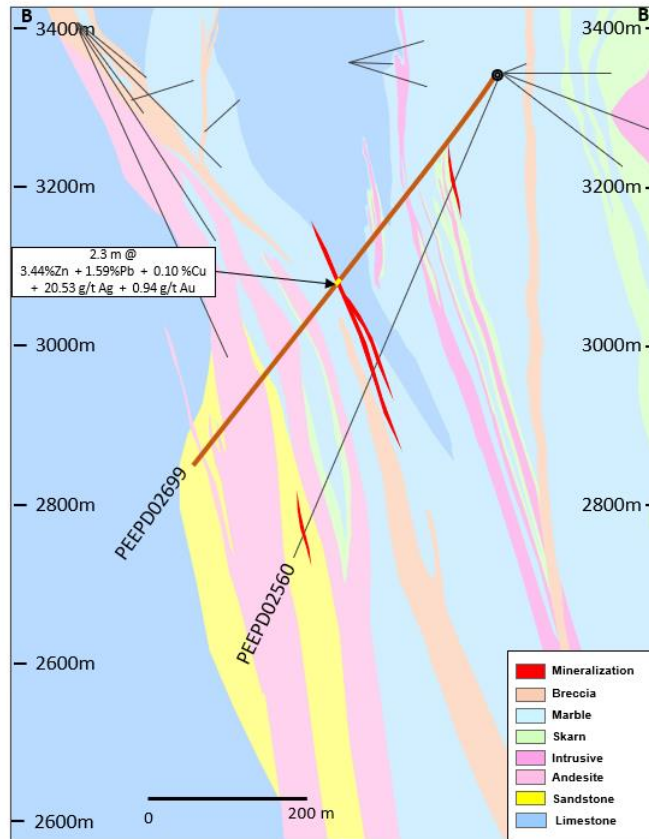
EL PORVENIR - 4Q23 - MAIN INTERSECTIONS									
Hole_id	Ore body	From	To	Length	Zn%	Pb%	Cu%	Ag g/t	Au g/t
PEEPD02699	Integracion 3300	330.5	332.8	2.3	3.44	1.59	0.10	20.53	0.94
PEEPD02702	Integracion 3300	266.0	269.5	3.5	2.99	1.15	0.46	130.97	0.42
PEEPD02692	Integracion 3300	245.7	249.4	3.7	1.38	1.25	0.04	17.91	0.11
And	Integracion 3300	470.0	474.4	4.3	4.48	0.01	0.46	9.19	0.20
And	Integracion 3300	642.6	647.1	4.6	1.39	3.35	0.06	221.56	0.30

Note: Intervals with assays not reported here have no consistent samples > 2.0% Zinc + Lead or assay results are pending. True widths of the mineralized intervals are unknown at this time. NSI refers to no significant intercept. PAR refers to pending assay results.









For 1Q24, we will continue drilling the south extension of the Integración target at the 3300 level and start drilling the VAM, Dom Lucho and Porvenir 9 targets with the objective of extending the known mineralization and identifying new mineralized zones. We plan to drill 2,650 meters with two rigs.

### Atacocha

During 4Q23, drilling was focused on the Asunción Orebody and Norte Orebody. In 4Q23, 1,044 meters were drilled with one rig, totaling 2,941 meters in 2023. No significant result was reported in 4Q23.

We will start drilling at Atacocha in 2Q24, focusing on the extension of the Integración target to upper levels of the mine with one rig (1,000m).

### Morro Agudo

In 4Q23, 1,626 meters of mining infill drilling was carried out in the underground mine at Morro Agudo, totaling 6,585 meters in 2023. No exploratory drilling was carried out in the Morro Agudo/Bonsucesso areas.

### Hilarión

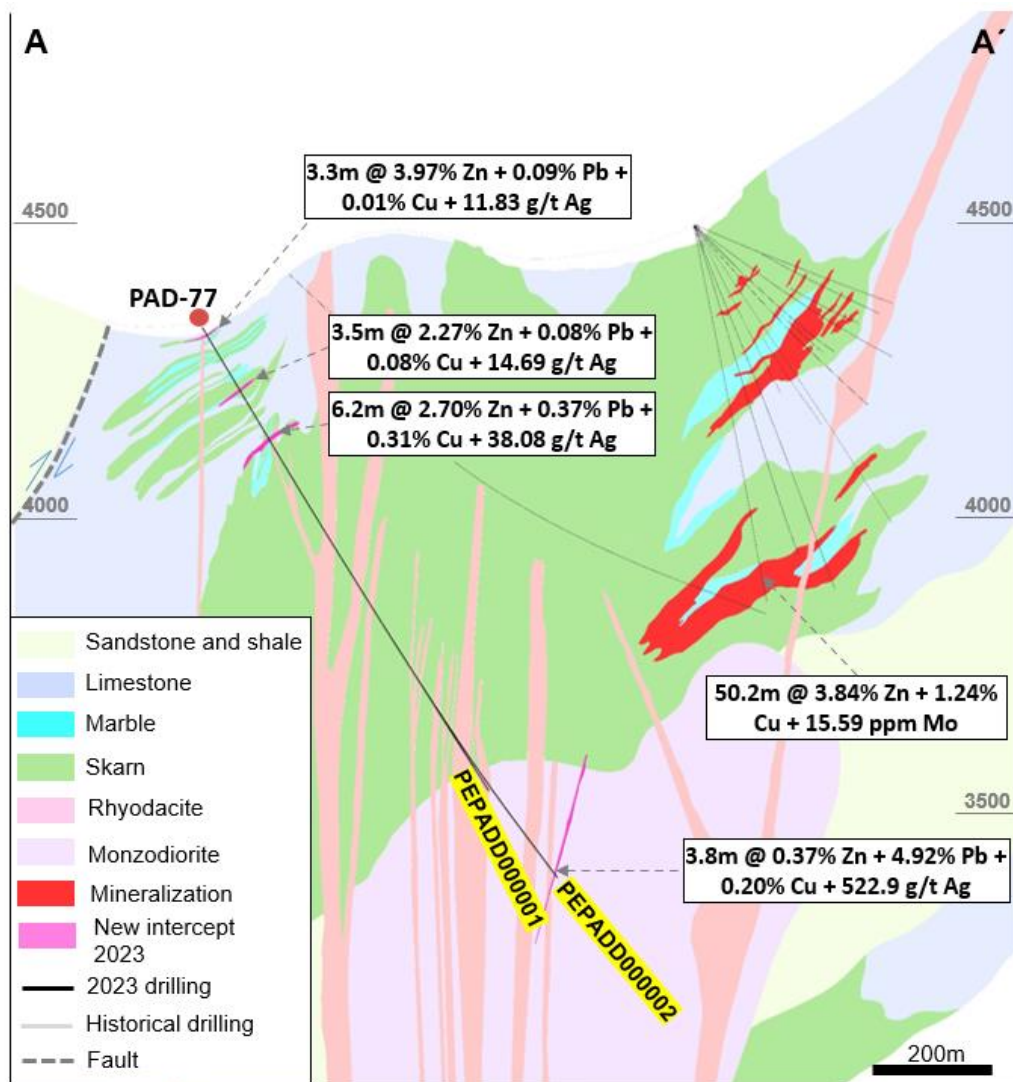
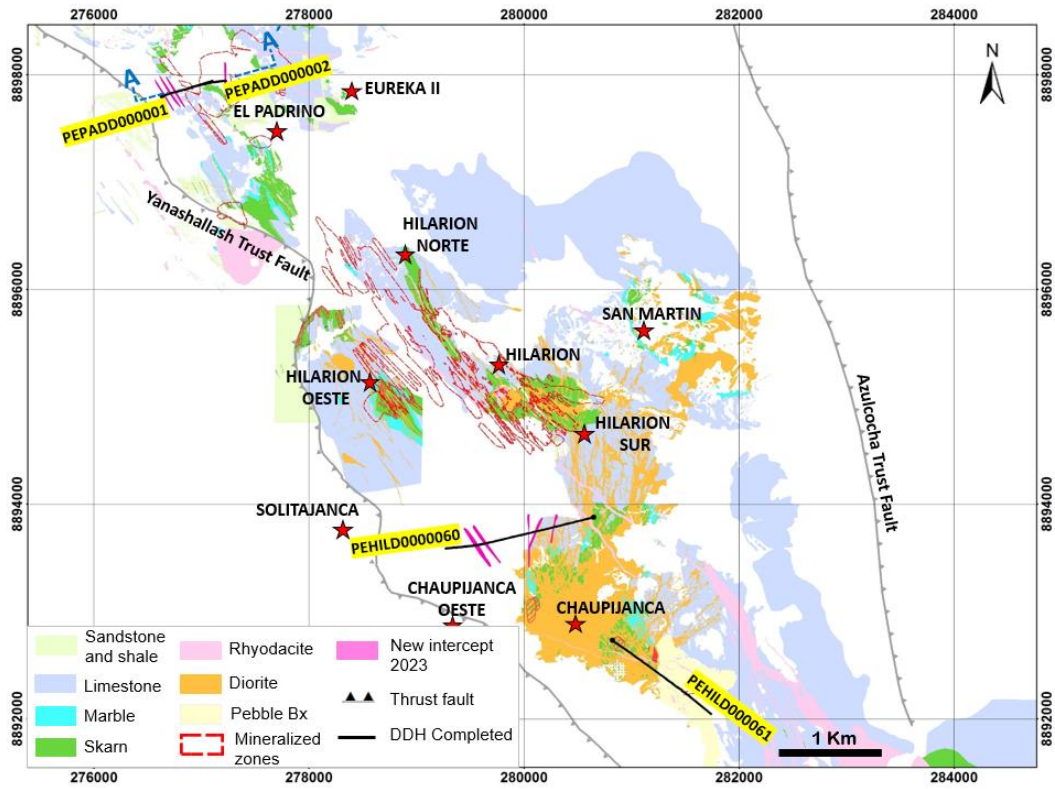
In 4Q23, a total of 1,652 meters were drilled at Hilarión with two rigs, totaling 4,100 meters in 2023.

During 4Q23, drilling of the PEHILD000061 hole began at the Chaupijanca South Target, cutting part of the Chaupijanca stock with little development of skarn alteration at the contact between the stock and limestones of the Pariatambo Superior formation. In this hole three veins of 0.5 to 0.8 meters were intercepted with grades of 1.86% Zn to 3.16% Zn and at a depth of 655.5 meters, 10.4 meters were intercepted with 467.4ppm Mo on average.

Drill hole PEPADD000001 was completed at the El Padrino Target, intercepting three zinc mineralized horizons within the Pariatambo Formation, 3.3 meters with 3.97% Zn, 3.5 meters with 2.27% Zn and 6.1 meters with 2.70% Zn. From a depth of 260.1 meters, the mixed skarn - porphyry zone presents a stockwork zone of veins of qz-py-mo-cpy, considering a main intercept of 102.5 meters with marginal grades of 0.15% Cu and 291.11ppm Mo. At the contact between the mixed zone and the porphyry zone, thin and marginal lenses of copper bearing massive sulfides occur over a broad interval highlighting the interval from 817.9 to 820.0 meters with 2.1 meters with 0.82% Cu. Between 374 and 405 meters, a 31meter interval displays Mo grades averaging about 440 ppm, and from 756 to 778 meters, a 22meter interval with 400 ppm Mo. In hole PEPADD000002, lead mineralization was identified below 1,100 meters showing 3.8 meters with 0.37% Zn, 4.92% Pb, 0.20% Cu, 522.91g/t Ag and 0.22g/t Au. Copper mineralization was identified below 800 meters in two intervals of 2.5 meters each with 1.10 and 1.38% Cu. From 759 to 780 meters, a zone of 11 meters averaged about 600ppm Mo, similar to hole PEPADD000001.

HILARIÓN - 4Q23 - MAIN INTERSECTIONS									
Hole_id	Ore body	From	To	Length	Zn%	Pb%	Cu%	Ag g/t	Au g/t
PEHILD000061	Chaupijanca Sur	NSI	NSI	NSI	NSI	NSI	NSI	NSI	NSI
PEPADD000001	El Padrino	22.5	25.8	3.3	3.97	0.09	0.01	11.83	0.01
And	El Padrino	132.1	135.6	3.5	2.27	0.08	0.08	14.69	0.01
And	El Padrino	230.8	237.0	6.1	2.70	0.37	0.31	38.08	0.01
And	El Padrino	817.9	820.0	2.1			0.82	9.75	0.06
PEPADD000002	El Padrino	1129.2	1133.0	3.8	0.37	4.92	0.20	522.91	0.22
And	El Padrino	818.3	820.8	2.5			1.10	10.19	0.07
And	El Padrino	839.7	842.2	2.5			1.38	18.89	0.12

Note: Intervals with assays not reported here have no consistent samples > 2.0% Zinc + Lead or assay results are pending. True widths of the mineralized intervals are unknown at this time. NSI refers to "no significant intercept". PAR refers to "pending assay results".





The main objective at Hilarión in 2024 is to consolidate the geological information to define the project strategy for the next years. For 1Q24, we have only scheduled environmental monitoring and road maintenance activities.

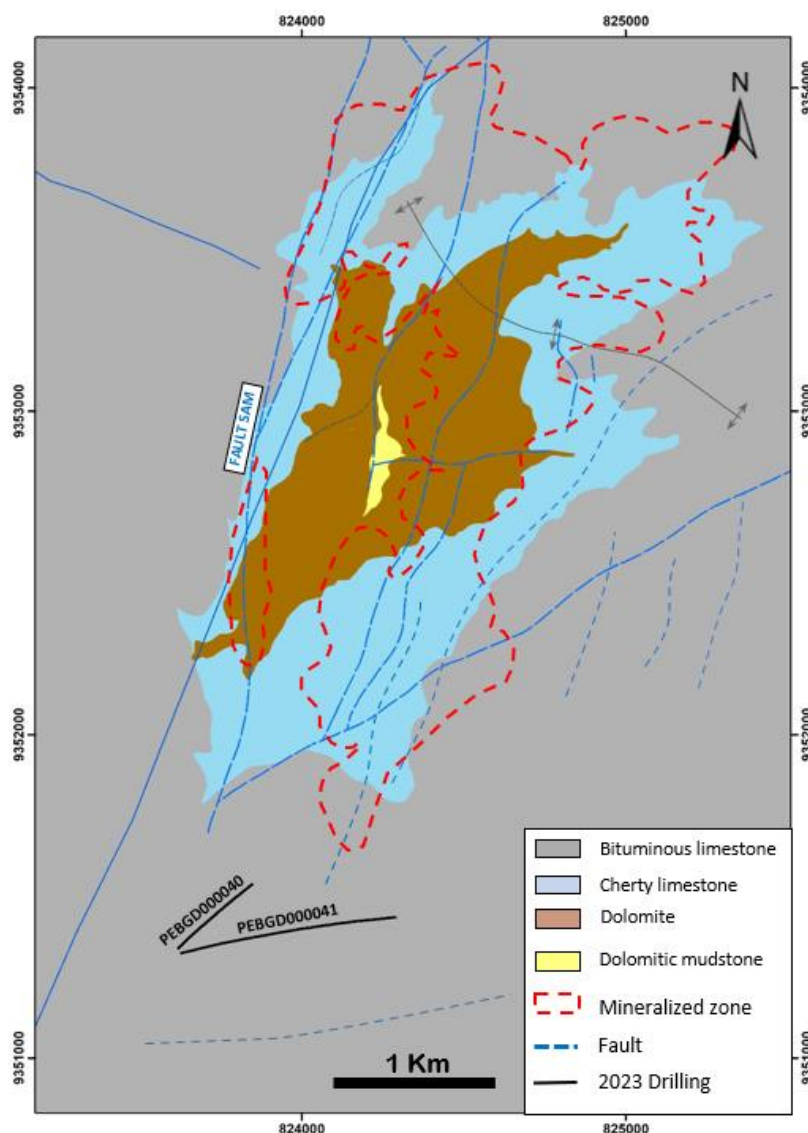
### Florida Canyon

During 4Q23, 1,362 meters of an initially scheduled 2,770 meters were carried out with one rig due to the internal reprioritization of projects. This reprioritization is consequence of the largest meter executed by the Hilarión project, and the initial marginal results obtained by the exploratory drilling campaign in the Florida Sur target, such as the half-meter intercept with 2.05% Zn, 0.47% Pb and 2.58 g/t Ag.

In addition, the construction and maintenance activity of the project's access road continued, which aims to reach the La Florida Annex.

FLORIDA CANYON - 4Q23 - MAIN INTERSECTIONS									
Hole_id	Ore body	From	To	Length	Zn%	Pb%	Cu%	Ag g/t	Au g/t
PEBGD000040	Florida Sur	NSI	NSI	NSI	NSI	NSI	NSI	NSI	NSI
PEBGD000041	Florida Sur	NSI	NSI	NSI	NSI	NSI	NSI	NSI	NSI

Note: Intervals with assays not reported here have no consistent samples > 2.0% Zinc + Lead or assay results are pending. True widths of the mineralized intervals are unknown at this time. NSI refers to "no significant intercept". PAR refers to "pending assay results".



For 1Q24, we only scheduled environmental monitoring and social agreements activities.

## Namibia

Namibia is strategically important to Nexa for the development of copper exploration projects and mining activities outside Latin America. The Otavi and Namibia North joint venture projects are strategically placed in a copper province in the northern part of the country. Exploratory work in Namibia is expected to target high-grade copper sediment hosted deposits along the fertile Tsumeb and Kombat belts.

The 2023 drilling program was completed, with a total of 4,933 meters drilled at the Namibia North project. The focus was testing the potential of the Deblin fault system at Namibia North.

### Otavi Project

No drilling activity occurred at the Otavi project in 4Q23 and 2023. No drilling is planned for 2024 at this project.

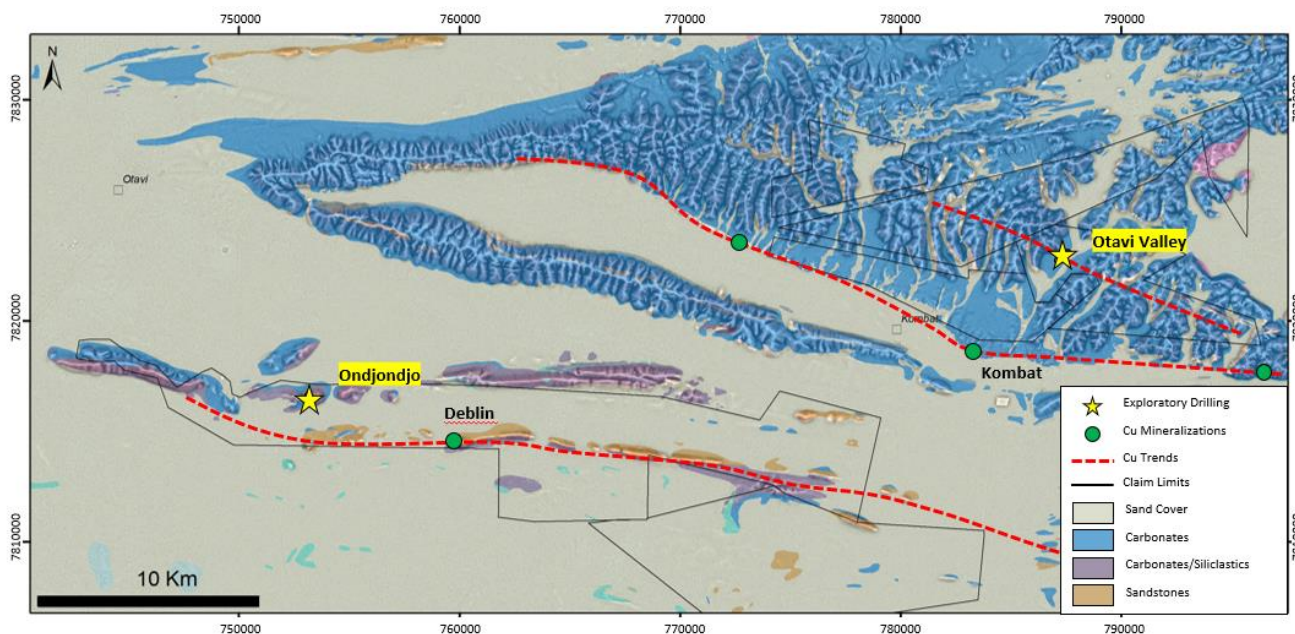
### Namibia North Project

During 4Q23, drilling activity was mainly focused on exploratory diamond drilling in early-stage targets along important Cu trends in the belt. Exploratory work in Namibia is targeting high-grade Copper sediment hosted deposits along the fertile OML (Otavi Mountainlands) belt. In 4Q23, the exploration program in Namibia North executed 1,167 meters with two rigs over 3 drillholes as part of our activities to assess Cu potential along the Ondjondjo Target (located only 6km from the Deblin Ore body) and Otavi Valley Targets. In 2023, a total of 4,933 meters were drilled at this project.

The last drill rig was demobilized in December 2023 due to the rainy season and is expected to be mobilized back to the project in March 2024 after budget definition. No significant intersection was observed in the holes.

NAMÍBIA - 4Q23 - MAIN INTERSECTIONS									
Hole_id	Ore body	From	To	Length	Zn%	Pb%	Cu%	Ag g/t	Au g/t
NANAND000064	Ondjondjo	NSI	NSI	NSI	NSI	NSI	NSI	NSI	NSI
NANAND000065	Otavi Valley	NSI	NSI	NSI	NSI	NSI	NSI	NSI	NSI
NANAND000066	Otavi Valley	NSI	NSI	NSI	NSI	NSI	NSI	NSI	NSI

Note: Intervals with assays not reported here have no consistent samples > 0.5% Copper over three meters or assay results are pending. True widths of the mineralized intervals are unknown at this time. NSI refers to "no significant intercept". PAR refers to "pending assay results".



Drilling will resume in April 2024, with meterage still to be defined due to the beginning of the fiscal year in Namibia occurring in April.

### 2024 Mineral Exploration Strategy

Our exploration strategy for 2024 is aimed at focusing on Mineral Resource expansion through brownfield and infill drilling near operating mines and extension drilling on advanced projects. A total of 66,050 meters of drilling is planned for 2024, including 42,100 meters in Peru (63%) and 23,950 meters in Brazil (37%). At Cerro Lindo, we plan to drill a total of 23,100 meters including exploratory drilling at Patahuasi Millay, Pucasalla and its extensions, located in the northern side of the Cerro Lindo mine and extension drilling at Orebodies 8B, 9, 5 and 6A, located southeast of the mine. At the Pasco Complex (El Porvenir and Atacocha), we plan to drill 8,500 meters divided between the Integración target to extend the mineralized hydrothermal breccia to upper levels of the deposit and at Don Lucho, VAM and Porvenir 9 targets. At the Hilarión and Florida Canyon projects, our focus will be to advance geological mapping and integration of geological data to define the exploration strategy for the years ahead. At Aripuanã, the strategy will be to drill 9,000 meters to identify the mineralization in the Massaranduba target to validate the continuation of the deposit in the southeast side of the Aripuanã mine. At Vazante, we plan to carry out 12,350 meters of brownfield drilling, 7,050 to extend known orebodies such as Sucuri and Sucuri North and 5,300 meters of infill drilling at the BDMG Orebody to convert Inferred Mineral Resources into Indicated Mineral Resources. In Namibia, we plan to drill to continue investigating copper mineralization in the Tsumeb trend, however, the drilling program remains under review\*. We expect to continue advancing our drilling campaigns and developing our pipeline of projects in regional areas with additional 13,100 meters of diamond drilling, prioritizing belts for exploratory drilling and Mineral Resource expansion to consolidate our Zinc and Copper portfolio with optimized investments between them.

\* The fiscal year in Namibia starts in April and budget discussions are ongoing.



**Note 1 – Laboratory Reference**

The laboratories used to test our assays were: ALS Global for Brazil, Namibia, and Peruvian Greenfield and brownfield projects; Certimin S.A. for Cerro Lindo; and Inspectorate Limited for El Porvenir.

**Technical Information**

Jose Antonio Lopes, MAusIMM (Geo): 224829, a mineral resources manager, a qualified person for purposes of National Instrument 43-101 – *Standards of Disclosure for Mineral Projects* and a Nexa employee, has approved the scientific and technical information contained in this news release.

Further information, including key assumptions, parameters, and methods used to estimate Mineral Reserves and Mineral Resources of the mines and/or projects referenced in the tables above can be found in the applicable technical reports, each of which is available at [www.sedarplus.com](http://www.sedarplus.com) under Nexa's SEDAR+ profile.

**About Nexa**

Nexa is a large-scale, low-cost integrated zinc producer with over 65 years of experience developing and operating mining and smelting assets in Latin America. Nexa currently owns and operates five long-life mines - three located in the Central Andes of Peru and two located in the state of Minas Gerais in Brazil - and it is ramping up Aripuanã, its sixth mine in Mato Grosso, Brazil. Nexa also currently owns and operates three smelters, two located in Minas Gerais, Brazil and one in Peru, Cajamarquilla, which is the largest smelter in the Americas.

Nexa was among the top five producers of mined zinc globally in 2023 and one of the top five metallic zinc producers worldwide in 2023, according to Wood Mackenzie.

**Cautionary Statement on Forward-Looking Statements**

This news release contains certain forward-looking information and forward-looking statements as defined in applicable securities laws (collectively referred to in this news release as "forward-looking statements"). All statements other than statements of historical fact are forward-looking statements. The words "believe," "will," "may," "may have," "would," "estimate," "continues," "anticipates," "intends," "plans," "expects," "budget," "scheduled," "forecasts" and similar words are intended to identify estimates and forward-looking statements. Forward-looking statements are not guarantees and involve known and unknown risks, uncertainties and other factors which may cause the actual results, performance or achievements of NEXA to be materially different from any future results, performance or achievements expressed or implied by the forward-looking statements. Actual results and developments may be substantially different from the expectations described in the forward-looking statements for a number of reasons, many of which are not under our control, among them, the activities of our competition, the future global economic situation, weather conditions, market prices and conditions, exchange rates, and operational and financial risks. The unexpected occurrence of one or more of the abovementioned events may significantly change the results of our operations on which we have based our estimates and forward-looking statements. Our estimates and forward-looking statements may also be influenced by, among others, legal, political, environmental or other risks that could materially affect the potential development of our projects, including risks related to outbreaks of contagious diseases or health crises impacting overall economic activity regionally or globally.

These forward-looking statements related to future events or future performance and include current estimates, predictions, forecasts, beliefs and statements as to management's expectations with respect to, but not limited to, the business and operations of the Company and mining production our growth strategy, the impact of applicable laws and regulations, future zinc and other metal prices, smelting sales, CAPEX, expenses related to exploration and project evaluation, estimation of mineral reserves and/or mineral resources, mine life and our financial liquidity.

Forward-looking statements are necessarily based upon a number of factors and assumptions that, while considered reasonable and appropriate by management, are inherently subject to significant business, economic and competitive uncertainties and contingencies and may prove to be incorrect. Statements concerning future production costs or volumes are based on numerous assumptions of management regarding operating matters and on assumptions that demand for products develops as anticipated, that customers and other counterparties perform their contractual obligations, full integration of mining and smelting operations, that operating and capital plans will not be disrupted by issues such as mechanical failure, unavailability of parts and supplies, labor disturbances, interruption in transportation or utilities, adverse weather conditions, and other COVID-19 related impacts, and that there are no material unanticipated variations in metal prices, exchange rates, or the cost of energy, supplies or transportation, among other assumptions.

We assume no obligation to update forward-looking statements except as required under securities laws. Estimates and forward-looking statements involve risks and uncertainties and do not guarantee future performance, as actual results or developments may be substantially different from the expectations described in the forward-looking statements. Further information concerning risks and uncertainties associated with these forward-looking statements and our business can be found in our public disclosures filed under our profile on SEDAR ([www.sedarplus.com](http://www.sedarplus.com)) and on EDGAR ([www.sec.gov](http://www.sec.gov)).

### **For further information, please contact:**

Investor Relations Team

[ir@nexaresources.com](mailto:ir@nexaresources.com)